



South Jersey
Transportation
Planning Organization

Federal Fiscal Year 2026-2035

TRANSPORTATION IMPROVEMENT PROGRAM (TIP)

Executive Summary

817 East Landis Avenue, 2nd Floor • Vineland, New Jersey 08360

P: (856) 794-1941 • F: (856) 794-2549

www.sjtpo.org

Leonard Desiderio, Chairman • Jennifer Marandino, Executive Director

[this page is intentionally left blank]

English

If you wish to request this publication in a language other than English or wish to contact SJTPO for language assistance related to our efforts, please email languageaccess@sjtpo.org or call (856) 794-1941.

Arabic

للحصول على مساعدة لغوية متعلقة SJTPO تنبيه: إذا كنت ترغب في طلب هذه النشرة بلغة غير الإنجليزية أو ترغب في التواصل مع أو الاتصال على الرقم (856) 794-1941 languageaccess@sjtpo.org بجهودنا، يرجى إرسال بريد إلكتروني إلى

Bengali

আপনি যদি এই প্রকাশনাটি ইংরেজি ব্যতীত অন্য কোনো ভাষায় পেতে চান অথবা আমাদের কার্যক্রম সংক্রান্ত ভাষা সহায়তার জন্য SJTPO-এর সাথে যোগাযোগ করতে চান, তবে অনুগ্রহ করে languageaccess@sjtpo.org ঠিকানায় ইমেল করুন অথবা (856) 794-1941নম্বরে কল করুন।

Gujarati

જો તમે આ પ્રકાશન અંગ્રેજી સિવાયની અન્ય ભાષામાં મેળવવા માંગતા હોવ અથવા અમારા પ્રયત્નો સંબંધિત ભાષાકીય સહાય માટે SJTPOનો સંપર્ક કરવા માંગતા હોવ, તો કૃપા કરીને languageaccess@sjtpo.org પર ઇમેઇલ કરો અથવા (856) 794-1941 પર કોલ કરો.

Haitian Creole

Si ou ta renmen mande piblikasyon sa a nan yon lòt lang apa anglè, oswa si ou ta renmen kontakte SJTPO pou asistans nan lang konsènan efò nou yo, tanpri voye yon imèl bay l languageaccess@sjtpo.org oswa rele (856) 794-1941.

Hindi

यदि आप अंग्रेज़ी के सिवाए किसी अन्य भाषा में इस प्रकाशन का अनुरोध करना चाहते हैं या हमारे प्रयासों से संबंधित भाषा सहायता के लिए SJTPO से संपर्क करना चाहते हैं, तो कृपया languageaccess@sjtpo.org को मेल करें या (856) 794-1941 पर कॉल करें।

Korean

이 출판물을 영어가 아닌 다른 언어로 요청하거나 SJTPO에 문의하여 저희의 노력과 관련된 언어 지원을 받으시려면 이메일 (languageaccess@sjtpo.org) 또는 (856) 794-1941로 전화해 주세요.

Nepali

Itपाई यो प्रकाशन अङ्ग्रेजी बाहेकका भाषामा प्राप्त गर्न चाहनुहुन्छ वा हाम्रो अभियानसँग सम्बन्धित भाषिक सहायता प्राप्त गर्न SJTPO लाई सम्पर्क गर्न चाहनुहुन्छ भने, कृपया languageaccess@sjtpo.org मा इमेल गर्नुहोस् वा (856) 794-1941 मा फोन गर्नुहोस्।

Portuguese

Si desea solicitar esta publicación en un idioma distinto al inglés o desea comunicarse con SJTPO para solicitar asistencia con el idioma en relación con nuestras iniciativas, envíe un correo electrónico a languageaccess@sjtpo.org o llame al (856) 794-1941.

Punjabi

ਜੇਕਰ ਤੁਸੀਂ ਇਸ ਪ੍ਰਕਾਸ਼ਨ ਲਈ ਬੇਨਤੀ ਅੰਗਰੇਜ਼ੀ ਤੋਂ ਇਲਾਵਾ ਕਿਸੇ ਹੋਰ ਭਾਸ਼ਾ ਵਿੱਚ ਕਰਨਾ ਚਾਹੁੰਦੇ ਹੋ ਜਾਂ ਸਾਡੇ ਯਤਨਾਂ ਨਾਲ ਸਬੰਧਤ ਭਾਸ਼ਾ ਸਹਾਇਤਾ ਲਈ SJTPO ਨਾਲ ਸੰਪਰਕ ਕਰਨਾ ਚਾਹੁੰਦੇ ਹੋ, ਤਾਂ ਕਿਰਪਾ ਕਰਕੇ languageaccess@sjtpo.org 'ਤੇ ਈਮੇਲ ਕਰੋ ਜਾਂ (856) 794-1941 'ਤੇ ਕਾਲ ਕਰੋ।

Simplified Chinese

I如果您需要本资料的其他语言版本（非英语），或在与 SJTPO 沟通时需要语言支持，请发送邮件至 languageaccess@sjtpo.org 或拨打电话 (856) 794-1941。

Spanish

ISi desea solicitar esta publicación en un idioma distinto al inglés o desea comunicarse con SJTPO para solicitar asistencia con el idioma en relación con nuestras iniciativas, envíe un correo electrónico a languageaccess@sjtpo.org o llame al (856) 794-1941.

Traditional Chinese

如您希望取得本出版物的其他語言版本（非英語），或需要就我們的相關工作獲得語言協助，請傳送電子郵件至 languageaccess@sjtpo.org，或致電 (856) 794-1941 聯絡 SJTPO。

Urdu

توجہ دیں: اگر آپ اس اشاعت کی درخواست انگریزی کے علاوہ کسی اور زبان میں کرنا چاہتے/چاہتی ہیں یا ہماری کوششوں پر ای میل languageaccess@sjtpo.org سے رابطہ کرنا چاہتے/چاہتی ہیں تو، براہ کرم SJTPO سے متعلق لسانی اعانت کے لیے کریں یا (856) 794-1941 پر کال کریں۔

Vientamese

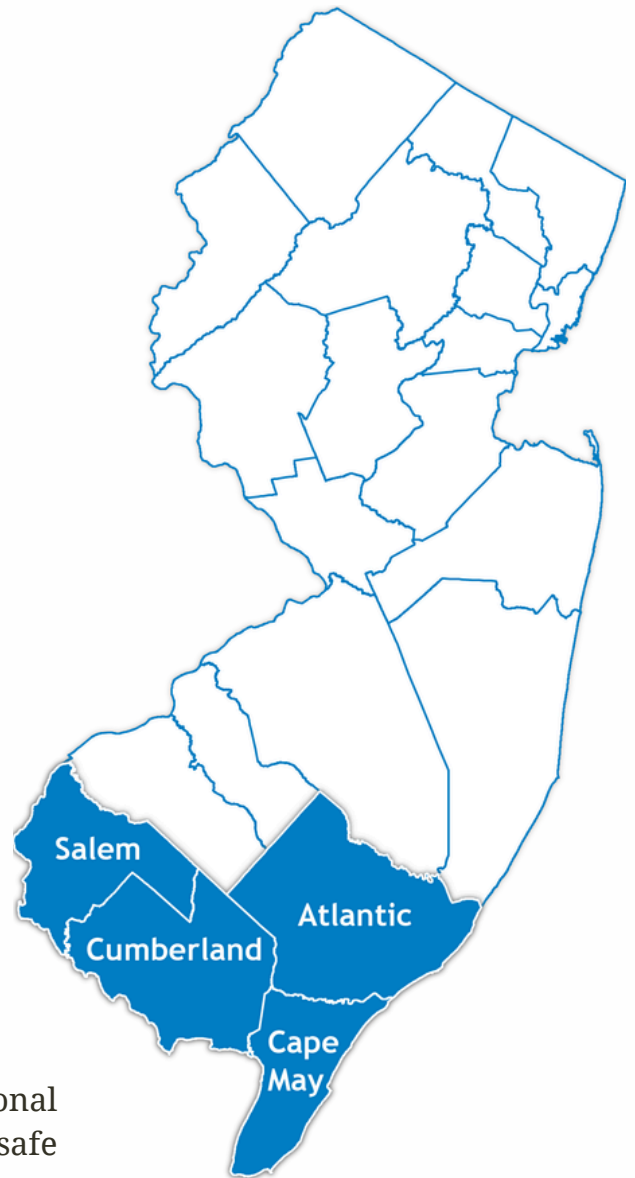
Nếu quý vị muốn yêu cầu ấn phẩm này bằng ngôn ngữ ngoài tiếng Anh hoặc muốn liên hệ với SJTPO để được hỗ trợ ngôn ngữ liên quan đến nỗ lực của chúng tôi, xin vui lòng gửi email đến languageaccess@sjtpo.org hoặc gọi (856) 794-1941.



South Jersey Transportation Planning Organization

WWW.SJTPO.ORG

SJTPO is the federally recognized Metropolitan Planning Organization (MPO) for the southern New Jersey region, serving Atlantic, Cape May, Cumberland, and Salem Counties. Under federal law, the formation of an MPO is required for any urbanized area (UZA) with a population greater than 50,000, permitting the MPO to carry out transportation planning and decision-making for the UZA(s). Formed in 1993, SJTPO replaced three smaller existing MPOs and incorporated areas not previously served. The formation provided a stronger regional approach to solving transportation problems and brought new opportunities to southern New Jersey. SJTPO is vital to the region, as the MPO serves as a technical resource, provides access to funding, and works to provide a regional approach to address transportation planning and engineering issues.



Four counties, one mission:

to create a transportation system, based on regional collaboration that moves people and goods in a safe and efficient manner, inclusive of all modes and users.

Title VI Compliance / SJTPO fully complies with Title VI of the Civil Rights Act of 1964, the Civil Rights Restoration Act of 1987, and related nondiscrimination mandates in all programs and activities. SJTPO's website, www.sjtpo.org, may be translated into multiple languages. Publications and other public documents can be made available in alternative languages and formats upon request. SJTPO's public meetings are always held in ADA-accessible facilities and, whenever possible, in transit-accessible locations. SJTPO will work to accommodate all reasonable requests for translation, interpretation, or auxiliary services. Please submit requests at least seven days before public meetings so we can secure the services. Other translation requests, such as those for larger documents, will be provided as quickly as possible and may take up to three weeks. Requests may be made by emailing languageaccess@sjtpo.org or calling (856) 794-1941. Any person who believes they have been aggrieved by an unlawful discriminatory practice by SJTPO under Title VI has a right to file a formal complaint. Any such complaint must be in writing and filed with SJTPO's Title VI Compliance Manager and/or the appropriate state or federal agency within 180 days of the alleged discriminatory occurrence. For more information on the SJTPO Title VI program or to obtain a Title VI Complaint Form, please visit www.sjtpo.org/Title-VI, call (856) 794-1941, or email TitleVI@sjtpo.org.

The preparation of this report has been funded in part by the U.S. Department of Transportation, Federal Transit Administration, and Federal Highway Administration. This document is disseminated under the sponsorship of the U.S. Department of Transportation in the interest of information exchange. The United States Government assumes no liability for its contents or their use thereof.

[this page is intentionally left blank]

Contents

Introduction	1
Overview of the Transportation Improvement Program	2
Components of the TIP	3
Relationship to the Regional Transportation Plan.....	6
Development of the TIP	6
Project Funding	11
Study and Development	13
How to Use the TIP Tables and Project Sheets.....	14
Understanding the TIP Project Sheet.....	16
Regional Projects & Programs	17
NJDOT Statewide Projects & Programs	20
NJ TRANSIT Projects & Programs.....	23

Figures

Figure 1: TIP Project Types.....	3
Figure 2: STBGP Areas in the Four-County SJTPO Region.....	12

1. Introduction

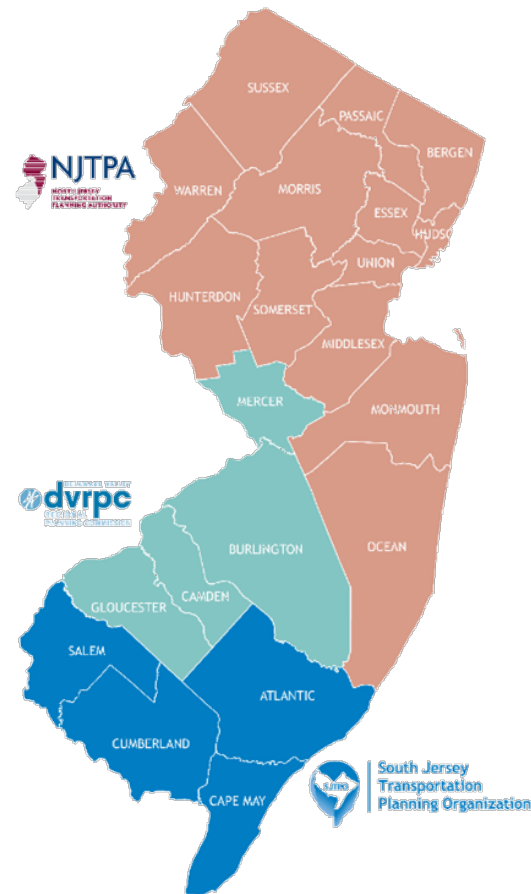
The South Jersey Transportation Planning Organization (SJTPO) is the federally recognized Metropolitan Planning Organization (MPO) for the southern New Jersey region, serving Atlantic, Cape May, Cumberland, and Salem Counties.

Under federal law, an MPO must be formed for any urbanized area (UZA) with a population greater than 50,000. The MPO is responsible for developing transportation plans for the region. SJTPO is vital to the region, serving simultaneously as a technical resource, a conduit for member agencies to maintain their eligibility for federal transportation funds, a convener for cooperative decision-making, and a coordinator of regional planning activities addressing transportation planning and engineering issues.

Federal funding for transportation projects and programs is channeled through MPOs. To guide transportation investment decisions, MPOs coordinate transportation planning activities among participating agencies and adopt a long-range regional transportation plan (RTP).

Further, MPOs are responsible for developing a Transportation Improvement Program (TIP), which is the subject of this document. A TIP is a federally mandated document that lists all federal and state-funded surface transportation projects and programs in a metropolitan area. The MPO develops it in collaboration with state and local transportation agencies, transit operators, and the public. Each MPO is required to produce a TIP that spans at least four years and must be updated every two years.

Each MPO must ensure the region's compliance with federal regulations that impact transportation decisions, such as the 1990 Clean Air Act Amendments. To meet federal requirements, MPOs ensure the eligibility of their member agencies and transit operators for federal transportation funds, covering planning, capital improvements, and operations.



Overview of the Transportation Improvement Program

The TIP is a federally required document, updated every two years, that details all federal and state-funded surface transportation projects and programs over a specified time frame. The TIP includes regional highway projects and programs, as well as statewide projects and programs to be advanced by the New Jersey Department of Transportation (NJDOT) and New Jersey Transit (NJ TRANSIT).

This document is SJTPO’s TIP for Federal Fiscal Years (FFYs) 2026 to 2035, effective from October 1, 2025, through September 30, 2035 – see [Table 1](#). The fiscally constrained TIP is a federally required planning document that includes only those transportation projects for which funding is reasonably expected to be available during the TIP’s time period. The MPO must provide sufficient financial information to demonstrate that projects in the document can be implemented using committed, available, or reasonably available revenue sources.

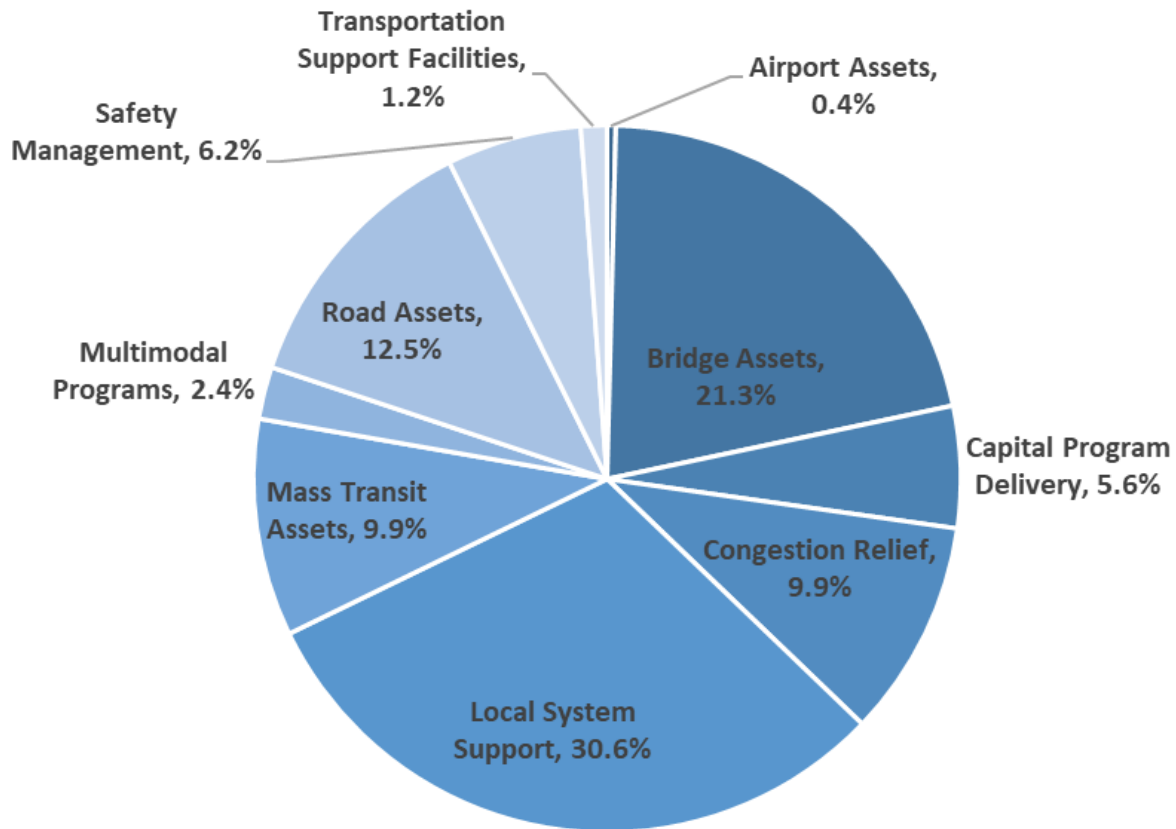
Table 1: TIP Years

	Full TIP	Fiscally Constrained Portion	Informational Portion
Federal Fiscal Year	FFY 2026 - 2035	FFY 2026 - 2029	FFY 2030 - 2035
Number of Years	10	4	6
Effective Dates	October 1, 2025 – September 30, 2035	October 1, 2025 – September 30, 2029	October 1, 2029 – September 30, 2035

SJTPO’s TIP complements the Statewide Transportation Improvement Program (STIP) for New Jersey, which includes the TIPs from the three MPOs that serve New Jersey: SJTPO, DVRPC, and NJTPA. The STIP serves two purposes: it presents a comprehensive, one-volume guide to significant transportation improvements planned in New Jersey, and it serves as the federally required reference document for FHWA and FTA in approving the expenditure of federal funds for transportation projects in New Jersey.¹ The TIP contains a range of project types, as illustrated in [Figure 1](#).

¹ As specified in [23 Code of Federal Regulations \(CFR\) 450\(216\)](#).

Figure 1: TIP Project Types



Components of the TIP

There are four components of the TIP, including:

1. A List of Projects;
2. A Financial Plan;
3. The Transportation Conformity Analysis, and
4. Performance-Based Planning.

List of Projects

The TIP must include all regionally significant projects receiving FHWA or FTA funds, or for which FHWA or FTA approval is required, in addition to non-federally funded projects that are consistent with the RTP. All surface transportation projects and other transportation-related improvements within the SJTPO region are included in the TIP. The projects are categorized by state organization: Regional Projects and Programs (Section 2), NJDOT Statewide Projects and Programs (Section 3), and NJ TRANSIT Statewide Projects and Programs (Section 4). The Regional Projects and Programs section comprises projects and programs within the SJTPO region, including those sponsored by the NJDOT and those locally led by SJTPO-member agencies. In

contrast, the NJDOT Statewide Projects and Programs, as well as the NJ TRANSIT Projects and Programs, encompass transportation initiatives managed throughout the state.

Financial Plan

Federal planning regulations require the TIP to include a financial plan for implementing the TIP. It must indicate the public and private financial resources that are reasonably expected, along with a set of recommendations for innovative financing techniques to fund critical projects and programs. Federal expenditures in the first four years of the TIP (FFY 2026 – 2029) are strictly constrained to expected funding.

SJTPO's 10-year TIP (FFY 2026-2035) represents a joint commitment between NJDOT, NJ TRANSIT, and SJTPO to provide funding for specifically identified projects and programs within the region and to participate in statewide programs. The 10-year TIP is based on a specific set of statewide financial assumptions to meet federal guidelines. Details of financial assumptions can be found in the [STIP document](#).

Only the first four years (FFY 2026-2029) of the STIP are fiscally constrained, and the following six years (FFY 2030-2035) are included for informational purposes. Programming costs and decisions are made based on these amounts. These programming decisions are made in cooperation with NJDOT, NJ TRANSIT, local government representatives, other relevant agencies (all members of the MPOs), the State Legislature, and the public.

Details on how projects are funded, and specific funding sources within SJTPO's discretion, can be found under [Project Funding](#).

Transportation Conformity Analysis

The entire four-county SJTPO region falls within the Philadelphia-Wilmington-Atlantic City, PA-NJ-MD-DE Marginal 8-Hour Ozone Non-Attainment Area. As such, all projects within the TIP are reviewed for their effect on air quality and, consequently, their degree of conformity to air quality standards established by the United States Environmental Protection Agency (US EPA). Transportation Conformity, as the process is formally known, is demonstrated when future planned, federally funded highway and transit projects are determined not to cause new air quality violations, worsen existing violations, or delay the timely attainment of the NAAQS. Conformity findings must also be based on established budgets for "ozone precursor" pollutants – volatile organic compounds (VOCs) and oxides of nitrogen (NOx) – for all applicable analysis years in the MPO region of the designated non-attainment area.

The Transportation Conformity document aims to demonstrate the conformity of the FFY 2026-2035 TIP and the RTP within the NAAQS. Consistent with the requirements for nonattainment areas and through the Transportation Conformity determination, SJTPO has demonstrated that

the projects and programs within the FFY 2026-2035 TIP and the current RTP, *Forward 2050*, will continue to meet the 2015 NAAQS and conform to the State Implementation Plan (SIP).

The Transportation Conformity findings are incorporated into the approved TIP and included as [Appendix A](#).

Performance-Based Planning

Performance-Based Planning and Programming (PBPP), as defined by FHWA, is a systematic, data-driven approach that links transportation investment decisions to performance outcomes. It is a core requirement for both statewide and metropolitan transportation planning processes. A performance-based approach to planning and programming enhances accountability and transparency, ultimately leading to more informed investment decisions. PBPP centers around three performance measures and their seven associated goals as outlined below.

Performance Measure 1: Safety Performance Management

1. Safety

Performance Measure 2: Pavement and Bridge Condition Performance

2. Infrastructure Preservation

Performance Measure 3: Travel Time and Freight Reliability Performance

3. Congestion Reduction
4. System Reliability
5. Freight Movement and Economic Vitality
6. Environmental Sustainability
7. Reduced Project Delivery Delays

Additionally, following the MAP-21 Act, the FTA established a baseline for a strategic, systematic process to effectively operate, maintain, and improve public capital assets throughout their lifecycles.² The FTA approach to PBPP includes the development of the following performance-based plans:

1. Transit Asset Management (TAM) Plan
2. Public Transportation Agency Safety Plan (PTSAP)

² As specified in 49 United States Code (USC) 625.

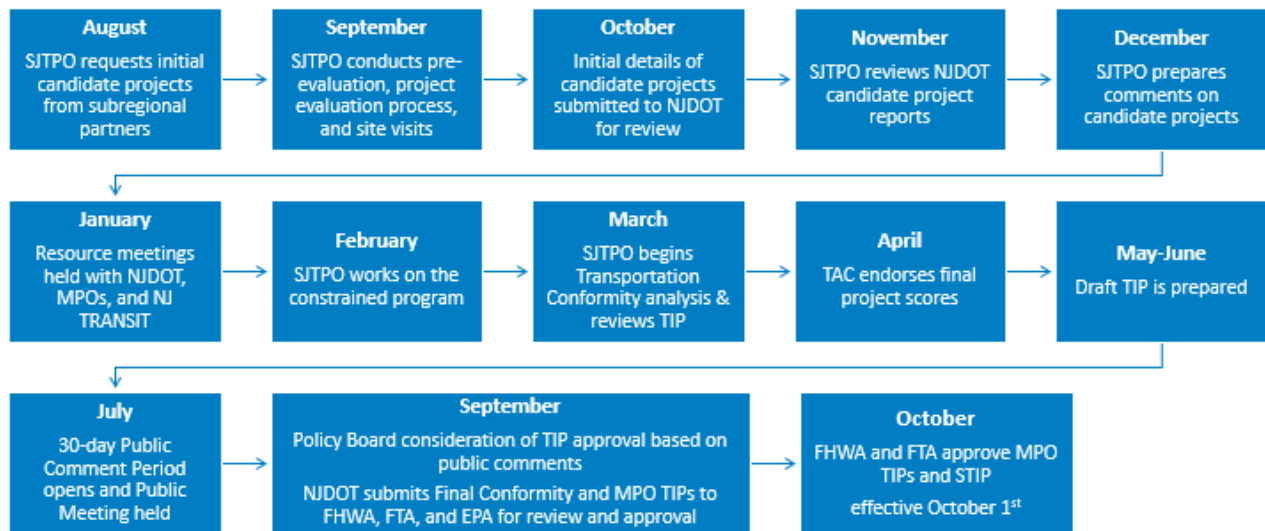
Relationship to the Regional Transportation Plan

Forward 2050 serves as the long-range RTP for the SJTPO region and guides the region’s transportation goals for the next 20+ years through the horizon year of 2050. *Forward 2050* identifies the region’s long-term needs and the projects and activities that seek to address them. Much like the TIP, only transportation projects in the RTP are eligible for federal funding. *Forward 2050* also includes a comprehensive review of current transportation resources in South Jersey. It includes highway, transit, bicycle, pedestrian, and intermodal facilities. For each travel mode, the travel demand is reviewed, needs are assessed, and opportunities for improvement are discussed along with strategies.

The RTP guides the TIP project selection process, which supports SJTPO’s ten regional goals. The RTP must be updated at least every four years, while the TIP is updated every two years. As such, every other update cycle, project solicitation, and scoring are initiated during the RTP update. For off-RTP cycle updates, projects are solicited during TIP development.

Development of the TIP

While the TIP takes effect on October 1, marking the start of the federal fiscal year, the development process begins 12 to 15 months in advance.



Approximately 15 months before adoption:

- SJTPO requests basic project information from its subregional planning partners. During this time, SJTPO works with NJDOT Capital Programming staff to forecast federal funding availability.

- The Pre-Evaluation Screening Process, Project Evaluation Process, and any necessary site visits are then completed to determine priority projects and provide feedback to improve project implementation and adherence to goals.
- Next, the draft list of projects, along with basic project information, is submitted to NJDOT for preliminary review.
- NJDOT then provides comments on the draft list of projects a year before adoption, and shortly after, SJTPO prepares final comments on the list to share with the subregions.

Approximately ten months before adoption:

- Multiple resource meetings are held with the NJDOT, the three MPOs, NJ TRANSIT, the FHWA, and the FTA. Once final comments and concerns are addressed, SJTPO works to finalize the fiscally constrained Capital Program for the TIP.
- Once the program is received, SJTPO begins the Transportation Conformity analysis, and the Transportation Conformity document is drafted.

Approximately six months before adoption:

- The SJTPO Technical Advisory Committee (TAC) and Policy Board endorsed final project scores from the SJTPO Project Evaluation Process.
- The TIP is then drafted and reviewed internally for three months.

Approximately three months before adoption:

- Once both documents are completed, SJTPO initiates a three-month public involvement process to ensure that individuals, affected agencies, private transportation providers, and other interested parties have the opportunity to comment on the proposed program. In accordance with federal mandates, SJTPO actively encourages public participation in the planning process.
- Per SJTPO's Public Involvement Plan (PIP), the TIP is open for a minimum 30-day public comment period. All comments and responses are incorporated into a final TIP document, which is presented to the TAC and Policy Board for consideration and potential adoption in September 2025.

In the final month before adoption:

- SJTPO continues to collaborate with state and subregional partners to track project status and aid with the federal authorization process. Following federal approval, the SJTPO submits the TIP to NJDOT for inclusion in the draft STIP. Once completed, NJDOT submits the Final Conformity and STIP to FHWA, FTA, and the US EPA for review. The final STIP and individual TIP documents are approved, adopted, and effective October 2025.

Project Evaluation Process

The RTP is the guiding document for the TIP. Not all federally funded projects included in the RTP will be included in the TIP, whereas all federally funded projects in the TIP must be included in the RTP. Each project or phase included in the TIP must be consistent with the approved RTP.

The SJTPO revised its [Project Evaluation Process](#) on July 22, 2024, to better support the development of the RTP and the TIP. This process includes two distinct tracks: near-term projects planned for implementation within 1–10 years, and long-term projects anticipated for year 11 and beyond. For the TIP, only 1–10-year projects are included; projects in the 1–10-year timeframe are scored using detailed evaluation criteria that reflect federal, state, and regional priorities and are eligible for inclusion in the TIP. The evaluation not only assigns numerical scores but also encourages project improvements through a Pre-Evaluation Screening Process, ensuring that near-term investments are strategically aligned and impactful.

For projects other than Local Lead projects using other funding sources, the Project Evaluation Process may differ based on the nature of the funding. Projects that meet specific criteria may qualify for funding from another SJTPO program, such as the Highway Safety Improvement Program (HSIP), the funded SJTPO Local Safety Program, CMAQ, CRP, the Transportation Alternatives (TA) Set-Aside Program, and the Safe Routes to School (SRTS) Program. These funding programs are competitive, and each has its application process. Specific details about those processes are available on the respective pages on the SJTPO website.

- [Local Safety Program](#), funded through federal HSIP
- [Congestion Mitigation & Air Quality Improvement Program \(CMAQ\)](#)
- [Carbon Reduction Program \(CRP\)](#)
- [Transportation Alternatives Set-Aside Program \(TA Set-Aside\)](#)
- [Safe Routes to School Program \(SRTS\)](#)

Consultation and Coordination

SJTPO staff do not work unilaterally on the TIP. The development of the TIP begins 15 months before the expected TIP adoption date. It is the product of months of SJTPO staff work and deliberations involving regional groups, including the NJDOT, NJ TRANSIT, county and municipal transportation planners and engineers, tribal nations, the public, and elected officials at the state, county, and municipal levels.

The TIP links the transportation planning process to implementation. Throughout the TIP development cycle, SJTPO works with county, municipal, and other local partners to identify and prioritize projects for the TIP project pool.

To demonstrate that the TIP will meet air quality standards mandated by the US EPA, SJTPO coordinates with the US EPA, the NJ Department of Environmental Protection (NJDEP), and other agencies during the Transportation Conformity process. SJTPO then works with NJDOT, NJ TRANSIT, and New Jersey's other MPOs to compile the draft and final STIP.

When the draft TIP and Transportation Conformity are prepared, the SJTPO initiates a public involvement process to ensure that individuals, affected agencies, private transportation providers, and other interested parties have the opportunity to comment on the proposed program. Following adoption, SJTPO continues to collaborate with state and subregional partners to monitor project status and support the federal authorization process. The collaborative process is integral to the development of the TIP and the ongoing updating of the TIP documentation after its adoption.

The TIP and STIP are valuable references for implementing agencies, such as NJDOT and NJ TRANSIT, as well as all other parties interested in transportation issues in the state. Hundreds of projects and millions of dollars in funding are allocated each year to improve transportation in New Jersey. An approved TIP provides the region with access to federal funds, serves as the basis for transportation funding decisions over the next ten years, and establishes consensus among MPO members, other transportation interest groups, and the public on which projects should have priority for available funds.

For a project to be funded and moved forward toward implementation, it must be included in the TIP document. Once included in the approved TIP, it is scheduled for funding. However, the project's implementation is not guaranteed, as it is the project sponsor's responsibility, and may be subject to additional studies, analyses, or public hearings to justify its implementation. The TIP can be used to learn more about these projects planned for the coming years, providing transparency into project costs, funding sources, and timelines.

Appendix C of the TIP document provides more details on the consultation and coordination process, including the roles and responsibilities of all agencies involved in TIP development, as well as an outline of key decision points.

Public Involvement Process

When the Draft TIP and Transportation Conformity are prepared, the SJTPO initiates a public involvement process to ensure that residents, regional stakeholders, affected agencies, employees, private transportation providers, and other interested parties have the opportunity to comment on the proposed program.

As noted in the [PIP](#), which outlines federal requirements and best practices related to public involvement.

As one of SJTPO's major planning documents, the TIP requires a minimum 30-day public comment period, during which at least one public meeting is held. The public comment period for the FFY 2026-2035 TIP will be held from Wednesday, July 2, 2025, through Sunday, August 3, 2025. SJTPO hosted two public meetings, with participants able to attend in person or virtually via GoToMeeting. Meetings will be held at midday and in the evening to accommodate the schedules of interested parties as best as possible.

The public comment period and public meetings are held jointly for SJTPO's TIP and the portion of the Statewide TIP relevant to the SJTPO region. The NJDOT and NJ TRANSIT do not have separate meetings for their statewide projects or programs.

Revision Process

Although a new TIP is developed every two years, the TIP is updated as needed through a modification and amendment process. Once the TIP is adopted by the SJTPO Policy Board, approved by the state, and the STIP is approved by the federal government, procedures for updating the TOP are specifically outlined in a joint [Memorandum of Understanding \(MOU\)](#) between DVRPC, NJTPA, SJTPO, NJ TRANSIT, and NJDOT. The MOU establishes procedures for processing and implementing revisions, amendments, and modifications to the three TIP documents from the three MPOs, as well as to the STIP.

As noted, federal regulations require that each project or project phase included in the TIP shall be consistent with the approved RTP. To maintain consistency between the two documents, the RTP is revised in conjunction with the TIP, per the MOU.

The goal of the MOU is to simplify the TIP modification and amendment process. State agencies may make specific changes, such as small cost increases, without any action by SJTPO. Significant changes, such as larger cost increases or the addition or deletion of a project, are reviewed by SJTPO staff and the SJTPO Policy Board. These revisions must maintain fiscal constraint, adhere to the Project Evaluation Process, ensure Transportation Conformity, and incorporate appropriate public involvement. Any modification made to the current TIP is incorporated into a [TIP Tracker](#), providing complete transparency.

The NJDOT Electronic Statewide Transportation Improvement Program (eSTIP) is a tool designed to streamline and enhance the modification and amendment process for the TIP/STIP by electronically submitting, processing, and approving amendments or modifications. The [NJDOT eSTIP](#) enables NJDOT, NJTPA, SJTPO, DVRPC, NJ TRANSIT, PANYNJ, FHWA, FTA, and the public to access information on projects, financials, amendments, and modification actions, thereby promoting interagency collaboration. While the agency partners use the eSTIP tool to process revisions to the TIP/STIP, it also serves as a public reference for viewing current project information and the mapped [TIP/STIP projects](#).

Project Funding

The TIP includes local and state transportation infrastructure projects, as well as regional and statewide transportation improvement programs and transit enhancement initiatives.

Funding Sources

FHWA and FTA are the primary funding sources for projects in the TIP. Additionally, the State of New Jersey provides funds through the Transportation Trust Fund (TTF) and appropriations, which have been used to fund select projects.

Urbanized Funding Available through SJTPO

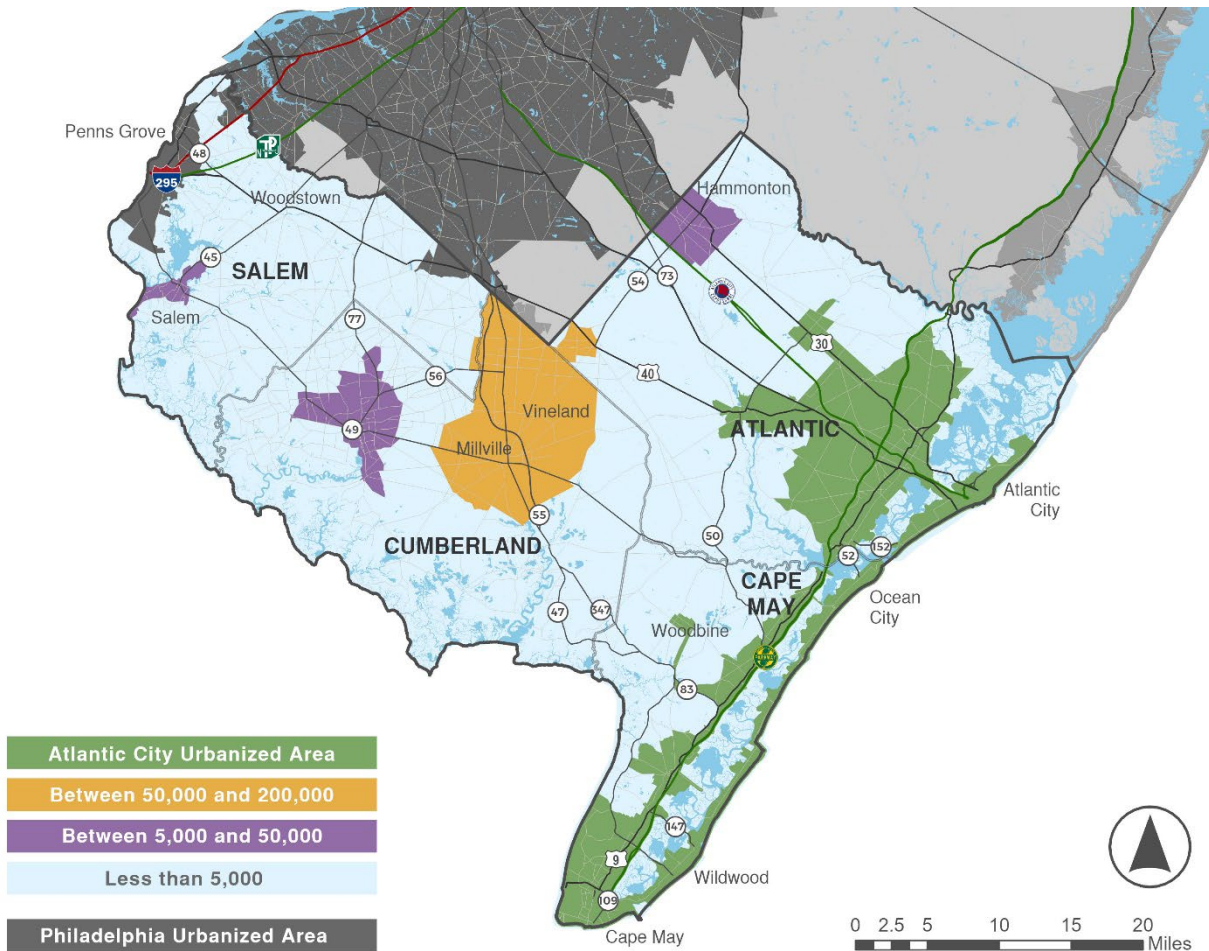
For federally funded projects initiated by SJTPO's county partners, the primary funding source is the Surface Transportation Block Grant Program (STBGP). These projects are often referred to as Local Lead projects since the county serves as the project sponsor and is the responsible agency for moving the project through the project delivery process. The STBGP funding may be used on highway, bridge, or transit capital projects, planning and research programs, and a variety of other eligible project types.

STBGP funding is suballocated to New Jersey areas based on their relative share of the state's population. The four STBGP funding categories available for use in the SJTPO region are:

- **STBGP-AC:** explicitly designated to the Atlantic City Urbanized Area (AC UZA) with a population equal to or greater than 200,000 persons
- **STBGP-B50K200K:** areas with a population between 50,000 and 200,000 persons
- **STBGP-B5K50K:** areas with a population between 5,000 and 50,000 persons
- **STBGP-L5K:** areas with a population of less than 5,000 persons

[Figure 2](#) illustrates the four categories of STBGP funding received by SJTPO, which are allocated to the surrounding population area where these funds are eligible for expenditure.

Figure 2: STBGP Areas in the Four-County SJTPO Region



Other Federally Funded Programs Available through SJTPO

Aside from STBGP funds, counties and municipalities in the SJTPO region are eligible for additional funding through NJ TRANSIT and NJDOT, but distributed by SJTPO. The Project Selection Process may differ based on the nature of the funding:

- **Local Safety Program:** SJTPO provides federal funding through the federal [Highway Safety Improvement Program \(HSIP\)](#) for safety projects in the SJTPO Local Safety Program.
- **Congestion Mitigation & Air Quality (CMAQ):** SJTPO provides federal [CMAQ](#) funding for surface transportation projects that improve transportation efficiency by reducing congestion and improving air quality.
- **Carbon Reduction Program (CRP):** SJTPO provides [CRP](#) funding for projects that intend to reduce ecological impacts. Much like the CMAQ project selection process, the CRP project selection process is based on air quality benefits, emissions efficiency, cost-effectiveness, and deliverability.

- **Transportation Alternatives Set-Aside Program (TA Set-Aside):** SJTPO provides federal funding through the [TA Set-Aside Program](#) for projects designed to strengthen the cultural, aesthetic, and ecological aspects of the nation’s intermodal transportation system.
- **Safe Routes to School (SRTS) Program:** SJTPO helps administer NJDOT’s [SRTS Program](#). This program aims to make bicycling and walking to school safer and more appealing transportation alternatives, thereby encouraging a healthy, active lifestyle from an early age.

Both the TA Set-Aside and SRTS Programs are jointly administered by NJDOT and the MPOs. More information about these federally funded programs is available on the [NJDOT Local Aid Resource Center](#) webpage.

Multi-Year Funding

Multi-year funding is an innovative financing technique utilized by NJDOT and NJ TRANSIT to program and authorize only a specific portion of the project phase necessary to support reimbursement of planned cash outlays. The remaining portions of the project phase are programmed in subsequent years. Each multi-year, federally funded project will be submitted to FHWA with the condition that authorization to proceed is not a commitment or obligation to provide federal funds for that portion of the undertaking not fully funded herein. Fiscal constraint will always be maintained throughout this process.

SJTPO does not utilize multi-year funding for any Local Lead projects.

Study and Development

Study and Development is a process that identifies and prepares candidate projects for inclusion in future Fiscal Year TIPs. The RTP identifies potential NJDOT and NJ TRANSIT projects that require additional problem analysis and concept development to advance them to the next TIP. SJTPO typically does not lead the advancement of projects at this stage of work.

In the current TIP, several Study and Development Projects are being led by NJDOT in the SJTPO region.

- **Atlantic County, Atlantic City:** Route 30, Bridge Over Jonathan’s Thorofare – DBNUM 24388
- **Atlantic County, Hamilton Township:** Route 40/50, Bridge over Great Egg Harbor River – DBNUM 23307
- **Cumberland County, Bridgeton City:** Route 49, Buckshutem Road, Intersection Improvements (CR 670) – DBNUM 95017

- **Cape May County, Upper Township:** Route 49, Bridge over Mill Creek – DBNUM 24304
- **Atlantic County, Folsom Borough:** Route 54, Bridge over Penny Pot Stream – DBNUM 20348
- **Cumberland County, Vineland City:** Route 55 NB & SB, Bridge over Oak Road (CR 681) – DBNUM 23353
- **Cumberland County, Millville City:** Route 55 SB, Bridge over Route 49 – DBNUM 17304

Additional details about each project are included in Section 7 of the TIP document.

How to Use the TIP Tables and Project Sheets

The TIP document and subsequent STIP include several tables and charts detailing available state funding resources, as well as information about each project.

Tables 2-6 NJDOT and NJ TRANSIT Expenditures and Resources

The first five tables list the expenditures and resources for NJDOT and NJ TRANSIT, with figures shown in millions. Expenditures refer to the funds that respective agencies will spend, while resources are the funds available to the state from specific funding categories. NJDOT and NJ TRANSIT list their funds, federal and otherwise, for each federal fiscal year included.

Tables 7-11 Metropolitan Planning Organizations and Statewide Distribution of Funds

The next four tables in the TIP detail how funds are distributed from the state, NJDOT, and NJ TRANSIT to each of the three New Jersey MPOs, with figures shown in millions. Of the total amount of funds distributed to SJTPO, on average, an estimated \$14.5 million is programmed annually through STBGP funding by SJTPO, along with \$3.0 million in HSIP, \$1.9 million in CMAQ, and \$0.726 million averaged over the TIP years of CR funds for the Atlantic City Urbanized Area.

Tables 12-13 NJDOT Multi-year Project Funding

These two tables detail current and prior programmed funding for the NJDOT multi-year-funded federal projects and NJDOT multi-year-funded state projects. These projects are long-term, multi-year projects at either the federal or state level.

Table 14 NJ TRANSIT Federal Equipment Lease Payments

This table displays the current fiscal year's and future years' estimated funding needs for federal equipment lease payments for transit projects.

TIP Project Sheets

In addition to the financial tables, the TIP Project Sheets include information on the projects and programs to be advanced in the SJTPO region. The TIP projects are broken down by state organization: Regional Projects and Programs (Section 2), NJDOT Statewide Projects and Programs (Section 3), and NJ TRANSIT Projects and Programs (Section 4).

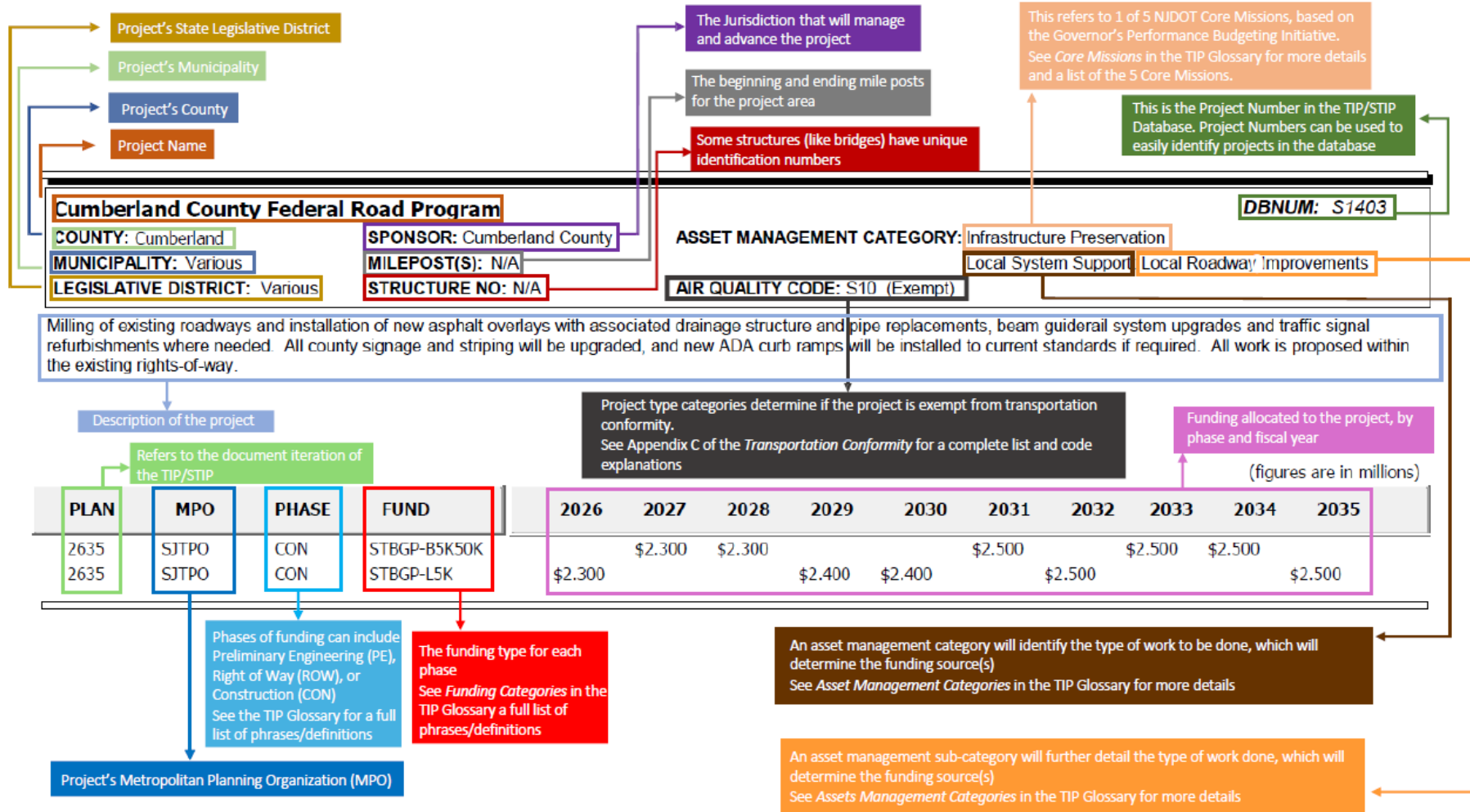
The TIP Executive Summary includes a table of TIP projects that provides financial information for each project, listed alphabetically by name. Across the project row are details on the project sponsor, its location, the MPO it falls under, the phase it is in (as of the TIP publication), the funding source, and the funding amounts for the year (FFY 2026-2035).

The graphic on the following page can be used as a guide for reading and understanding a TIP Project Sheet.

Web Map Application

To enhance transparency and accessibility, SJTPO has developed a dynamic, web-based mapping application to accompany the TIP. This web map application allows users to explore projects geographically and interactively, reflecting real-time updates as the TIP is amended or revised. Each project listing within the map includes the database (DB) number, project name, description, project funding amount, and geography (county) within the attributes table. Where available, additional details, such as project funding type and project sponsor, are added as attributes to improve usability and context. Given the evolving nature of the TIP, SJTPO maintains a single, continuously updated map rather than static versions, which can quickly become outdated. The map is housed directly on the [Projects webpage](#).

Understanding the TIP Project Sheet



DBNUM	PROJECT NAME	COUNTY	SPONSOR	FUND	PHASE	2026	2027	2028	2029	2030	2031	2032	2033	2034	2035	TOTAL			
DBNUM	PROJECT NAME	COUNTY	SPONSOR	FUND	PHASE	2026	2027	2028	2029	2030	2031	2032	2033	2034	2035	TOTAL			
S2523	Alloway-Woodstown Road (CR 603) and Fenwick Road, Local Road	Salem	Salem County	STBGP-L5K	CON						\$ 2.750					\$ 2.750			
					DES			\$ 0.150							\$ 0.150				
					PE		\$ 0.275								\$ 0.275				
S2522	Almond Road (CR 540)	Salem	Salem County	STBGP-B5K50K	CON									\$ 1.500		\$ 1.500			
					DES					\$ 0.150					\$ 0.150				
					PE					\$ 0.150					\$ 0.150				
S2503	Arctic Avenue, Arkansas to Chelsea Avenues	Atlantic	Atlantic City	STBGP-AC	CON					\$ 1.500					\$ 1.500				
S2504	Arctic Avenue, Chelsea Avenue to Black Horse Pike	Atlantic	Atlantic City	STBGP-AC	CON						\$ 0.900				\$ 0.900				
S2505	Arctic Avenue, Maine to Pennsylvania Avenues	Atlantic	Atlantic City	STBGP-AC	CON			\$ 1.500								\$ 1.500			
S2506	Arctic Avenue, Pennsylvania to Arkansas Avenues	Atlantic	Atlantic City	STBGP-AC	CON					\$ 1.500						\$ 1.500			
S2507	Atlantic Avenue, Columbia to Albany Avenues	Atlantic	Atlantic City	STBGP-AC	CON								\$ 1.500			\$ 1.500			
S2508	Atlantic Avenue, Jackson to Columbia Avenues	Atlantic	Atlantic City	STBGP-AC	CON									\$ 1.500		\$ 1.500			
					CON						\$ 0.600					\$ 0.600			
S2401	Chestnut Avenue Safety Improvements and Rehabilitation	Cumberland	City of Vineland	LOCAL-SJTPO	CON		\$ 4.953	\$ 0.010								\$ 4.963			
					DES	\$ 0.143									\$ 0.143				
				OTHER-SJTPO	CON		\$ 0.991											\$ 0.991	
					DES	\$ 0.356												\$ 0.356	
				SS4A-VINELAND	CON		\$ 18.821	\$ 0.041											\$ 18.862
					DES	\$ 0.214									\$ 0.600				\$ 0.814
S2519	Chestnut Avenue, Phase 1, Main Road to Spring Road	Cumberland	City of Vineland	STBGP-B50K200K	CON					\$ 1.640						\$ 1.640			
					DES			\$ 0.075							\$ 0.075				
					PE		\$ 0.075								\$ 0.075				
S2518	Chestnut Avenue, Phase 2, Brewster Road to Spring Road	Cumberland	City of Vineland	STBGP-B50K200K	CON						\$ 1.678					\$ 1.678			
					DES				\$ 0.075						\$ 0.075				
					PE			\$ 0.075							\$ 0.075				
S2517	Chestnut Avenue, Phase 3, Brewster Road to Lincoln Avenue	Cumberland	City of Vineland	STBGP-B50K200K	CON							\$ 1.710				\$ 1.710			
					DES					\$ 0.075					\$ 0.075				
					PE			\$ 0.075							\$ 0.075				
S2524	Cohansey - Friesburg Road (CR 635)	Salem	Salem County	STBGP-L5K	CON								\$ 1.250			\$ 1.250			
					DES					\$ 0.150					\$ 0.150				
					PE				\$ 0.125						\$ 0.125				
S2111	Commissioners Pike (CR 581)	Salem	Salem County	STBGP-L5K	CON			\$ 1.650								\$ 1.650			
					DES	\$ 0.150									\$ 0.150				
S2531	County Route 563 (Mill Road and Tilton Road) - Sections 2 thru 4	Atlantic	Atlantic County	STBGP-AC	CON							\$ 4.600			\$ 4.600				
S1403	Cumberland County Federal Road Program	Cumberland	Cumberland County	STBGP-L5K	CON	\$ 2.300			\$ 2.400	\$ 2.400		\$ 2.500			\$ 2.500	\$ 12.100			
					CON		\$ 2.300	\$ 2.300		\$ 2.500		\$ 2.500	\$ 2.500	\$ 2.500	\$ 12.100				
S2520	Delilah Road (CR646) & Tilton Road (CR563)	Atlantic	Atlantic County	STBGP-AC	CON				\$ 1.710							\$ 1.710			
S2528	East Avenue, Elmer Road to Walnut Road	Cumberland	City of Vineland	STBGP-B50K200K	CON								\$ 1.750			\$ 1.750			
					DES						\$ 0.075				\$ 0.075				
					PE					\$ 0.075					\$ 0.075				
S2525	Fort Elfsborg - Hancocks Bridge Road (CR 624)	Salem	Salem County	STBGP-L5K	CON									\$ 2.000		\$ 2.000			
					DES						\$ 0.150				\$ 0.150				
					PE					\$ 0.200					\$ 0.200				
S1903	Griffith Street/Grant Street (CR 657)	Salem	Salem County	STBGP-B5K50K	CON	\$ 0.750									\$ 0.750				
S2526	Harmersville-Canton Road/Main Street - Canton (CR 623)	Salem	Salem County	STBGP-L5K	CON									\$ 1.750		\$ 1.750			
					DES						\$ 0.150				\$ 0.150				
					PE					\$ 0.175					\$ 0.175				
S2306	Jerome Avenue, Ventnor Avenue (CR 629) to Beach Thorofare Bridge	Atlantic	Atlantic County	STBGP-AC	CON		\$ 2.910								\$ 2.910				
S2310	Kings Highway (CR 608), Route 83 to CR 628	Cape May	Cape May County	STBGP-AC	CON				\$ 0.990						\$ 0.990				
S2301	Kings Highway (CR 620) (MP 3.25-5.85)	Salem	Salem County	STBGP-L5K	CON					\$ 1.500						\$ 1.500			
					DES			\$ 0.150							\$ 0.150				
					PE	\$ 0.100									\$ 0.100				
S2527	Kings Highway (CR 620) (MP 6.08-9.41)	Salem	Salem County	STBGP-L5K	CON							\$ 1.500				\$ 1.500			
					DES				\$ 0.150						\$ 0.150				
					PE											\$ 0.150			
X100C	Local Bridges, SJTPO	Various	Local Lead	STBGP-OS-BRDG	ERC	\$ 5.000	\$ 5.000	\$ 5.000	\$ 5.000	\$ 5.000	\$ 5.000	\$ 5.000	\$ 5.000	\$ 5.000	\$ 5.000	\$ 50.000			
X065	Local CMAQ Initiatives	Various	Local Lead	CMAQ	EC	\$ 1.900	\$ 1.900	\$ 1.900	\$ 1.900	\$ 1.900	\$ 1.900	\$ 1.900	\$ 1.900	\$ 1.900	\$ 1.900	\$ 19.000			
X41A1	Local County Aid, SJTPO	Various	Local Lead	STATE	ERC	\$ 21.203	\$ 23.323	\$ 25.514	\$ 27.740	\$ 27.740	\$ 27.740	\$ 27.740	\$ 27.740	\$ 27.740	\$ 27.740	\$ 264.220			
X98A1	Local Municipal Aid, SJTPO	Various	Local Lead	STATE	ERC	\$ 12.335	\$ 13.656	\$ 15.022	\$ 16.410	\$ 16.410	\$ 16.410	\$ 16.410	\$ 16.410	\$ 16.410	\$ 16.410	\$ 155.883			
O4314	Local Safety/High Risk Rural Roads Program	Various	Local Lead	HSIP	ERC	\$ 3.000	\$ 3.000	\$ 3.000	\$ 3.000	\$ 3.000	\$ 3.000	\$ 3.000	\$ 3.000	\$ 3.000	\$ 3.000	\$ 30.000			
S2529	Magnolia Road, Spring Road to Lincoln Avenue	Cumberland	City of Vineland	STBGP-B50K200K	CON									\$ 1.865		\$ 1.865			
					DES						\$ 0.075			\$ 0.075					
					PE						\$ 0.075			\$ 0.075					
S2101	Martin Luther King Jr. Boulevard (Mediterranean Avenue to Route 30)	Atlantic	Atlantic City	STBGP-AC	CON	\$ 1.450									\$ 1.450				

DBNUM	PROJECT NAME	COUNTY	SPONSOR	FUND	PHASE	2026	2027	2028	2029	2030	2031	2032	2033	2034	2035	TOTAL	
DBNUM	PROJECT NAME	COUNTY	SPONSOR	FUND	PHASE	2026	2027	2028	2029	2030	2031	2032	2033	2034	2035	TOTAL	
X30A	Metropolitan Planning	Various	MPO	PL	PLS	\$ 1.127	\$ 1.149	\$ 1.172	\$ 1.196	\$ 1.220	\$ 1.244	\$ 1.269	\$ 1.294	\$ 1.320	\$ 1.346	\$ 12.337	
				PL-FTA	PLS	\$ 0.487	\$ 0.496	\$ 0.506	\$ 0.515	\$ 0.525	\$ 0.535	\$ 0.544	\$ 0.554	\$ 0.565	\$ 0.576	\$ 5.303	
				STBGP-L5K	PLS	\$ 0.276	\$ 0.276	\$ 0.276	\$ 0.276	\$ 0.276	\$ 0.276	\$ 0.276	\$ 0.276	\$ 0.276	\$ 0.276	\$ 0.276	\$ 0.276
S2315	Mill Road, Forest Grove Road to Gallagher Drive	Cumberland	City of Vineland	STBGP-B50K200K	CON			\$ 1.572								\$ 1.572	
					DES		\$ 0.075										\$ 0.075
					PE	\$ 0.075											
S2316	Mill Road, Gallagher Drive to Weymouth Road	Cumberland	City of Vineland	STBGP-B50K200K	CON				\$ 1.610							\$ 1.610	
					DES			\$ 0.075									\$ 0.075
					PE	\$ 0.075											
S2317	Mill Road, Garden Road (CR 674) to Forest Grove Road	Cumberland	City of Vineland	STBGP-B50K200K	CON		\$ 1.540									\$ 1.540	
					DES	\$ 0.075											\$ 0.075
					CON											\$ 1.979	\$ 1.979
S2530	Mill Road, Garden Road to Wheat Road	Cumberland	City of Vineland	STBGP-B50K200K	DES									\$ 0.075		\$ 0.075	
					PE							\$ 0.075				\$ 0.075	
					CON												\$ 1.800
S2509	New Hampshire Avenue, Parkside to Pacific Avenues	Atlantic	Atlantic City	STBGP-AC	CON			\$ 1.800								\$ 1.800	
S2510	North Carolina Avenue, Absecon Boulevard to Pacific Avenue	Atlantic	Atlantic City	STBGP-AC	CON										\$ 1.500	\$ 1.500	
S2311	Ocean Drive (CR 619), 99th Street South to Great Channel Bridge (0500-028)	Cape May	Cape May County	STBGP-AC	CON			\$ 2.450								\$ 2.450	
S2113	Ohio Avenue, Bacharach Boulevard to Atlantic Avenue	Atlantic	Atlantic City	STBGP-AC	CON		\$ 0.800									\$ 0.800	
S2511	Pacific Avenue, Massachusetts to New Hampshire Avenues	Atlantic	Atlantic City	STBGP-AC	CON			\$ 0.650								\$ 0.650	
X51	Pavement Preservation	Various	NJDOT	NHPP	ERC	\$ 1.500	\$ 1.500	\$ 1.500	\$ 1.500	\$ 1.500	\$ 1.260	\$ 1.260	\$ 1.260	\$ 1.260	\$ 1.260	\$ 13.800	
				STBGP-FLEX	ERC	\$ 0.500	\$ 0.500	\$ 0.500	\$ 0.500	\$ 0.500	\$ 0.420	\$ 0.420	\$ 0.420	\$ 0.420	\$ 0.420	\$ 4.600	
S2307	Philadelphia Avenue (CR 563)	Atlantic	Atlantic County	STBGP-AC	CON	\$ 3.000										\$ 3.000	
S2112	Quaker Neck Road (CR 657) Phase II	Salem	Salem County	STBGP-L5K	CON			\$ 1.500								\$ 1.500	
					DES	\$ 0.150											\$ 0.150
X35A1	Rail-Highway Grade Crossing Program, Federal	Various	NJDOT	RHC	EC	\$ 0.267	\$ 0.272	\$ 0.277	\$ 0.283	\$ 0.289	\$ 0.294	\$ 0.300	\$ 0.306	\$ 0.312	\$ 0.319	\$ 2.919	
S2318	Reconstruction of South East Avenue	Cumberland	City of Vineland	STBGP-B50K200K	CON	\$ 1.510										\$ 1.510	
S2516	Resurfacing of Indian Trail Road (CR 618)	Cape May	Cape May County	STBGP-L5K	CON							\$ 3.800				\$ 3.800	
S2513	Resurfacing of West Avenue CR 619 Phase 1	Cape May	Cape May County	STBGP-AC	CON								\$ 2.900			\$ 2.900	
S2514	Resurfacing of West Avenue CR 619 Phase 2	Cape May	Cape May County	STBGP-AC	CON									\$ 2.900		\$ 2.900	
S2515	Resurfacing of West Avenue CR 619 Phase 3	Cape May	Cape May County	STBGP-AC	CON										\$ 2.900	\$ 2.900	
S2312	Roosevelt Boulevard (CR 623)	Cape May	Cape May County	STBGP-AC	CON		\$ 2.000									\$ 2.000	
20342	Route 40/322, Bridge over Inside Thorofare	Atlantic	NJDOT	NHPP	CON		\$ 24.500									\$ 24.500	
19369	Route 9, Chapman Boulevard to Route 30 (Whitehorse Pike)	Atlantic	NJDOT	NHPP	CON						\$ 117.000					\$ 117.000	
					DES			\$ 14.000								\$ 14.000	
					ROW			\$ 12.000									\$ 12.000
					UTI						\$ 12.000						
15400A	Route 9, Tuckahoe (CR 631) to Roosevelt Boulevard (CR 623)	Cape May	NJDOT	NHPP	CON				\$ 12.500							\$ 12.500	
					DES	\$ 3.500										\$ 3.500	
					ROW	\$ 2.200											\$ 2.200
14428	Route 30, Bridge over Duck Thorofare	Atlantic	NJDOT	BFP	CON	\$ 20.450									\$ 20.450		
16350	Route 30, Bridge over Newfound Thorofare	Atlantic	NJDOT	NHPP	CON		\$ 37.400									\$ 37.400	
					BFP	ROW	\$ 0.700									\$ 0.700	
196A5	Route 40/322, Median Closures, Oakcrest Avenue to Spencer Avenue	Atlantic	NJDOT	NHPP	CON			\$ 9.000								\$ 9.000	
					ROW	\$ 5.000										\$ 5.000	
17303	Route 47, Bridge over Dennis Creek	Cape May	NJDOT	NHPP	CON			\$ 5.050								\$ 5.050	
20346	Route 47, Bridge over Grassy Sound	Cape May	NJDOT	BFP	CON	\$ 26.600										\$ 26.600	
					CON						\$ 11.700					\$ 11.700	
15340	Route 47, Henderson Avenue to High Street	Cumberland	NJDOT	NHPP	DES	\$ 2.700										\$ 2.700	
					ROW		\$ 1.800									\$ 1.800	
					UTI			\$ 2.100									\$ 2.100
12320	Route 47, Nummytown Mill Pond Dam	Cape May	NJDOT	NHPP	CON		\$ 10.600									\$ 10.600	
					ROW	\$ 2.000										\$ 2.000	
17329	Route 50, Bridge over Cedar Swamp Creek	Cape May	NJDOT	BFP	ERC	\$ 40.250										\$ 40.250	
					NHPP	ERC	\$ 9.372										\$ 9.372
18381	Route 50, Upper Bridge Road to Carl Road	Cape May/Atlantic	NJDOT	STBGP-FLEX	CON	\$ 12.500										\$ 12.500	
17306	Route 55, Bridges over Route 47	Cumberland	NJDOT	NHPP	CON		\$ 37.000									\$ 37.000	
18311	Route 9, Garden State Parkway to CR 559 (Mays Landing Road)	Atlantic	NJDOT	NHPP	CON					\$ 7.850						\$ 7.850	
					ROW		\$ 0.500									\$ 0.500	
16334	Route 295 SB Ramp K to CR 551, Bridge over Route 295 SB	Salem	NJDOT	NHPP	CON			\$ 13.500								\$ 13.500	
					BFP	DES	\$ 3.000									\$ 3.000	
15448	Route 322, Bridge over Great Egg Harbor River	Atlantic	NJDOT	NHPP	CON				\$ 16.000							\$ 16.000	
					BFP	ROW	\$ 0.500									\$ 0.500	
23391	Route 40, CR 557 (Tuckahoe Road) to Route 54 Blue Anchor Road/Wheat Road (CR 619)	Atlantic	NJDOT	STBGP-FLEX	CON		\$ 6.530									\$ 6.530	

Regional Projects & Programs

DBNUM	PROJECT NAME	COUNTY	SPONSOR	FUND	PHASE	2026	2027	2028	2029	2030	2031	2032	2033	2034	2035	TOTAL
DBNUM	PROJECT NAME	COUNTY	SPONSOR	FUND	PHASE	2026	2027	2028	2029	2030	2031	2032	2033	2034	2035	TOTAL
S2117	Seashore Road Phase 3 resurfacing (C.R. 626) from Sandman Boulevard (U.S Route 9) to Tabernacle Road (C.R. 647)	Cape May	Cape May County	STBGP-FLEX	CON	\$ 2.420										\$ 2.420
S2308	Second Road & Chew Road (CR 559), 7th Street to 12th Street	Atlantic	Atlantic County	STBGP-B5K50K	CON			\$ 2.430								\$ 2.430
S2313	Shunpike Road (CR 620), Oyster Road to Dias Creek Road (CR 612)	Cape May	Cape May County	STBGP-AC	CON	\$ 1.149										\$ 1.149
S2319	SJTPO Carbon Reduction Program	Various	SJTPO	CR-AC	ERC	\$ 0.663	\$ 0.676	\$ 0.690	\$ 0.704	\$ 0.718	\$ 0.732	\$ 0.747	\$ 0.762	\$ 0.777	\$ 0.792	\$ 7.261
S044	SJTPO Future Projects	Various	SJTPO	STBGP-AC	ERC	\$ -	\$ 0.001	\$ 0.925	\$ 0.002	\$ 2.261	\$ 2.382	\$ 0.206	\$ 0.002	\$ 2.160	\$ 2.292	\$ 10.230
				STBGP-B5K50K	ERC			\$ 0.120				\$ 0.150	\$ 0.180		\$ 0.200	\$ 0.650
				STBGP-L5K	ERC	\$ -	\$ 0.240	\$ 0.543	\$ 1.240		\$ 0.100	\$ 1.300	\$ 2.000	\$ 0.450		\$ 5.873
				STBGP-L5K	PLS											\$ 1.630
S2521	Somers Point-Mays Landing Road (CR559) - Section 1, Resurfacing	Atlantic	Atlantic County	STBGP-AC	CON								\$ 2.030			\$ 2.030
09361	South Inlet Transportation Improvement Project	Atlantic	SJTA/CRDA	STATE	CON	\$ 1.090	\$ 1.140	\$ 1.200								\$ 3.430
S2532	Tilton Road (CR563) - Section 6, Reconstruction	Atlantic	Atlantic County	STBGP-AC	CON					\$ 2.300	\$ 2.300					\$ 4.600
S2314	Townbank Road (CR 648), Clubhouse Drive to Bayshore Road (CR 603)	Cape May	Cape May County	STBGP-AC	CON				\$ 1.740							\$ 1.740
X107	Transportation Alternatives Program	Various	NJDOT	TA-AC	CON	\$ 0.585	\$ 0.597	\$ 0.609	\$ 0.621	\$ 0.633	\$ 0.646	\$ 0.659	\$ 0.672	\$ 0.686	\$ 0.699	\$ 6.407
S2512	Virginia Avenue, Absecon Boulevard to Pacific Avenue	Atlantic	Atlantic City	STBGP-AC	CON									\$ 1.500		\$ 1.500
S2302	Walnut Street (CR 665)	Salem	Salem County	STBGP-B5K50K	CON					\$ 1.500						\$ 1.500
					DES		\$ 0.150								\$ 0.150	
					PE	\$ 0.100									\$ 0.100	
S9912	Welchville Road (CR 540)	Salem	Salem County	STBGP-L5K	CON	\$ 0.900										\$ 0.900
S1905	Willow Grove Road (CR 639)	Salem	Salem County	STBGP-L5K	DES	\$ 0.900										\$ 0.900
S1904	Willow Grove Road (CR 639); Perkintown Road (CR 644)	Salem	Salem County	STBGP-L5K	CON		\$ 1.500									\$ 1.500

DBNUM	PROJECT NAME	COUNTY	SPONSOR	MUNICIPALITY	FUND	PHASE	2026	2027	2028	2029	2030	2031	2032	2033	2034	2035	TOTAL	
DBNUM	PROJECT NAME	COUNTY	SPONSOR	MUNICIPALITY	FUND	PHASE	2026	2027	2028	2029	2030	2031	2032	2033	2034	2035	TOTAL	
X12	Acquisition of Right of Way	Various	NJDOT	Various	STATE	ROW	\$ 0.200	\$ 0.450	\$ 0.450	\$ 0.450	\$ 0.450	\$ 0.450	\$ 0.450	\$ 0.450	\$ 0.450	\$ 0.650	\$ 4.450	
11344	ADA Curb Ramp Implementation	Various	NJDOT	Various	STATE	ERC	\$ 0.023	\$ 0.023	\$ 0.023	\$ 0.023	\$ 0.023	\$ 0.023	\$ 0.023	\$ 0.023	\$ 0.023	\$ 0.023	\$ 0.203	
					STBGP-FLEX	ERC	\$ 1.000	\$ 1.000	\$ 1.000	\$ 1.000	\$ 1.000	\$ 0.840	\$ 0.840	\$ 0.840	\$ 0.840	\$ 0.840	\$ 9.200	
19315	Aeronautics and UAS Program	Various	NJDOT	Various	STATE	ERC	\$ 0.375	\$ 0.375	\$ 0.375	\$ 0.375	\$ 0.375	\$ 0.375	\$ 0.375	\$ 0.375	\$ 0.375	\$ 0.750	\$ 4.125	
08415	Airport Improvement Program	Various	NJDOT	Various	STATE	ERC	\$ 4.000	\$ 4.000	\$ 4.000	\$ 4.000	\$ 4.000	\$ 4.000	\$ 4.000	\$ 4.000	\$ 4.000	\$ 4.000	\$ 40.000	
01335	Betterments, Dams	Various	NJDOT	Various	STATE	EC	\$ 0.100	\$ 0.225	\$ 0.300	\$ 0.225	\$ 0.225	\$ 0.225	\$ 0.225	\$ 0.225	\$ 0.225	\$ 0.300	\$ 2.275	
X72B	Betterments, Roadway Preservation	Various	NJDOT	Various	STATE	EC	\$ 12.000	\$ 13.500	\$ 13.500	\$ 13.500	\$ 13.500	\$ 13.500	\$ 13.500	\$ 13.500	\$ 13.500	\$ 18.000	\$ 138.000	
X72C	Betterments, Safety	Various	NJDOT	Various	STATE	EC	\$ 12.000	\$ 14.000	\$ 14.000	\$ 15.000	\$ 15.000	\$ 15.000	\$ 15.000	\$ 15.000	\$ 25.000	\$ 35.000	\$ 175.000	
X185	Bicycle & Pedestrian Facilities/Accommodations	Various	NJDOT	Various	CMAQ	ERC	\$ 3.000	\$ 3.000	\$ 3.000	\$ 3.000	\$ 3.000	\$ 3.000	\$ 3.000	\$ 3.000	\$ 3.000	\$ 3.000	\$ 3.000	\$ 30.000
					STATE	ERC	\$ 1.000	\$ 1.000	\$ 1.000	\$ 1.000	\$ 1.000	\$ 1.000	\$ 1.000	\$ 1.000	\$ 1.000	\$ 1.000	\$ 10.000	
					TA-FLEX	ERC	\$ 2.000	\$ 2.000	\$ 2.000	\$ 2.000	\$ 2.000	\$ 2.000	\$ 2.000	\$ 2.000	\$ 2.000	\$ 2.000	\$ 2.000	\$ 20.000
X07F	Bridge and Structure Inspection, Miscellaneous	Various	NJDOT	Various	STATE	EC	\$ 0.113	\$ 0.113	\$ 0.113	\$ 0.113	\$ 0.113	\$ 0.113	\$ 0.113	\$ 0.113	\$ 0.113	\$ 0.150	\$ 1.163	
03304	Bridge Deck/Superstructure Replacement Program	Various	NJDOT	Various	BFP-OS-BRDG	ERC	\$ 70.000										\$ 70.000	
					NHPP	ERC	\$ 24.000	\$ 24.000	\$ 24.000	\$ 24.000	\$ 24.000	\$ 20.160	\$ 20.160	\$ 20.160	\$ 20.160	\$ 20.160	\$ 220.800	
					STBGP-OS-BRDG	ERC	\$ 10.330	\$ 4.505	\$ 6.430		\$ 2.980				\$ 12.960	\$ 20.330	\$ 57.535	
98315	Bridge Emergency Repair	Various	NJDOT	Various	STATE	EC	\$ 63.000	\$ 63.750	\$ 66.750	\$ 86.750	\$ 83.750	\$ 86.750	\$ 83.750	\$ 86.750	\$ 100.000	\$ 100.000	\$ 821.250	
X07A	Bridge Inspection	Various	NJDOT	Statewide	NHPP	EC	\$ 17.500	\$ 16.000	\$ 17.500	\$ 16.000	\$ 17.500	\$ 13.440	\$ 14.700	\$ 13.440	\$ 14.700	\$ 13.440	\$ 14.700	\$ 154.220
					STBGP-FLEX	EC	\$ 9.700	\$ 11.700	\$ 9.700	\$ 11.700	\$ 9.700	\$ 9.828	\$ 8.148	\$ 9.828	\$ 8.148	\$ 9.828	\$ 9.828	\$ 98.280
					STBGP-OS-BRDG	EC	\$ 8.000	\$ 8.000	\$ 8.000	\$ 8.000	\$ 8.000	\$ 8.000	\$ 8.000	\$ 8.000	\$ 8.000	\$ 8.000	\$ 8.000	\$ 8.000
17341	Bridge Inspection Program, Minor Bridges	Various	NJDOT	Statewide	STATE	EC	\$ 6.000	\$ 6.600	\$ 8.000	\$ 6.000	\$ 6.000	\$ 6.000	\$ 6.000	\$ 6.000	\$ 6.600	\$ 6.600	\$ 63.800	
14404	Bridge Maintenance and Repair, Movable Bridges	Various	NJDOT	Various	STATE	EC	\$ 18.000	\$ 18.750	\$ 18.750	\$ 18.750	\$ 18.750	\$ 18.750	\$ 18.750	\$ 18.750	\$ 20.000	\$ 20.000	\$ 189.250	
17357	Bridge Maintenance Fender Replacement	Various	NJDOT	Various	NHPP	ERC	\$ 4.000	\$ 15.000	\$ 4.000	\$ 15.000	\$ 4.000	\$ 6.300	\$ 1.680	\$ 6.300	\$ 1.680	\$ 6.300	\$ 6.300	\$ 64.260
					STBGP-FLEX	ERC	\$ 1.000	\$ 5.000	\$ 1.000	\$ 5.000	\$ 1.000	\$ 2.100	\$ 0.420	\$ 2.100	\$ 0.420	\$ 2.100	\$ 2.100	\$ 20.140
17358	Bridge Maintenance Scour Countermeasures	Various	NJDOT	Various	NHPP	ERC	\$ 5.000	\$ 5.000	\$ 5.000	\$ 5.000	\$ 5.000	\$ 2.100	\$ 2.100	\$ 2.100	\$ 2.100	\$ 2.100	\$ 35.500	
					STBGP-FLEX	ERC	\$ 4.000	\$ 4.000	\$ 4.000	\$ 4.000	\$ 4.000	\$ 1.680	\$ 1.680	\$ 1.680	\$ 1.680	\$ 1.680	\$ 1.680	\$ 28.400
X70	Bridge Management System	Various	NJDOT	Various	STBGP-FLEX	EC	\$ 1.500	\$ 1.500	\$ 1.500	\$ 1.500	\$ 1.500	\$ 1.260	\$ 1.260	\$ 1.260	\$ 1.260	\$ 1.260	\$ 13.800	
13323	Bridge Preventive Maintenance	Various	NJDOT	Various	NHPP	EC	\$ 25.000	\$ 25.000	\$ 25.000	\$ 25.000	\$ 25.000	\$ 21.000	\$ 21.000	\$ 21.000	\$ 21.000	\$ 21.000	\$ 21.000	\$ 230.000
					STATE	EC	\$ 25.000	\$ 28.250	\$ 33.250	\$ 39.250	\$ 38.250	\$ 39.250	\$ 38.250	\$ 39.250	\$ 68.250	\$ 73.250	\$ 422.250	
					STBGP-FLEX	EC	\$ 15.000	\$ 15.000	\$ 15.000	\$ 15.000	\$ 15.000	\$ 12.600	\$ 12.600	\$ 12.600	\$ 12.600	\$ 12.600	\$ 12.600	\$ 12.600
08381	Bridge Replacement, Future Projects	Various	NJDOT	Various	BFP	ERC	\$ 4.852										\$ 4.852	
					BFP-OS-BRDG	ERC	\$ 72.740											\$ 72.740
					NHPP	ERC	\$ 16.262	\$ 18.322	\$ 18.645	\$ 21.269	\$ 17.929	\$ 19.088	\$ 18.853	\$ 18.840	\$ 18.514	\$ 18.553	\$ 18.553	\$ 186.275
					STATE	ERC	\$ 0.750	\$ 0.750	\$ 0.750	\$ 0.750	\$ 0.750	\$ 0.750	\$ 0.750	\$ 0.750	\$ 0.750	\$ 0.750	\$ 1.000	\$ 7.750
					STBGP-OS-BRDG	ERC	\$ 10.000											\$ 10.000
98316	Bridge Scour Assessment	Various	NJDOT	Various	STATE	ERC	\$ 0.150	\$ 0.150	\$ 0.150	\$ 0.150	\$ 0.150	\$ 0.150	\$ 0.150	\$ 0.150	\$ 0.150	\$ 0.150	\$ 1.500	
22352	Carbon Reduction Program	Various	NJDOT	Various	CR-B50K200K	ERC	\$ 0.196	\$ 0.200	\$ 0.204	\$ 0.208	\$ 0.212	\$ 0.217	\$ 0.221	\$ 0.225	\$ 0.230	\$ 0.234	\$ 2.147	
					CR-B5K50K	ERC	\$ 0.539	\$ 0.549	\$ 0.560	\$ 0.572	\$ 0.583	\$ 0.595	\$ 0.607	\$ 0.619	\$ 0.631	\$ 0.644	\$ 5.899	
					CR-L5K	ERC	\$ 1.314	\$ 1.314	\$ 1.367	\$ 1.395	\$ 1.423	\$ 1.451	\$ 1.480	\$ 1.510	\$ 1.540	\$ 1.571	\$ 14.365	
					CR-FLEX	PLS	\$ 1.000	\$ 1.000	\$ 1.000	\$ 1.000	\$ 1.000	\$ 1.000	\$ 1.000	\$ 1.000	\$ 1.000	\$ 1.000	\$ 1.000	\$ 10.000
22355	CMAQ Initiatives, Statewide	Various	NJDOT	Various	CMAQ	EC	\$ 11.250	\$ 19.800	\$ 22.800	\$ 0.500	\$ 0.603	\$ 3.852	\$ 34.356	\$ 38.539	\$ 38.865	\$ 43.884	\$ 214.449	
02379	Congestion Relief, Intelligent Transportation System Improvements (Smart Move Program)	Various	NJDOT	Various	STATE	ERC	\$ 2.500	\$ 3.000	\$ 3.000	\$ 3.000	\$ 3.000	\$ 3.000	\$ 3.000	\$ 3.000	\$ 3.000	\$ 6.000	\$ 32.500	
X180	Construction Inspection	Various	NJDOT	Various	STATE	EC	\$ 12.000	\$ 12.000	\$ 12.000	\$ 12.000	\$ 12.000	\$ 12.000	\$ 12.000	\$ 12.000	\$ 12.000	\$ 13.000	\$ 121.000	
05304	Construction Program IT System (TRNS.PORT)	Various	NJDOT	Various	STATE	EC	\$ 5.000	\$ 4.050	\$ 4.050	\$ 4.050	\$ 4.050	\$ 4.050	\$ 4.050	\$ 4.050	\$ 4.050	\$ 5.000	\$ 42.400	
09316	Culvert Replacement Program	Various	NJDOT	Various	STATE	ERC	\$ 0.500	\$ 1.000	\$ 1.000	\$ 1.000	\$ 1.000	\$ 1.000	\$ 1.000	\$ 1.000	\$ 1.000	\$ 2.000	\$ 10.500	
					STBGP-FLEX	ERC	\$ 2.000	\$ 2.000	\$ 2.000	\$ 2.000	\$ 2.000	\$ 1.680	\$ 1.680	\$ 1.680	\$ 1.680	\$ 1.680	\$ 1.680	\$ 18.400
X142	DBE Supportive Services Program	Various	NJDOT	Various	STATE	EC	\$ 0.020	\$ 0.020	\$ 0.020	\$ 0.020	\$ 0.020	\$ 0.020	\$ 0.020	\$ 0.020	\$ 0.020	\$ 0.020	\$ 0.200	
					STBGP-FLEX	EC	\$ 0.600	\$ 0.600	\$ 0.600	\$ 0.600	\$ 0.600	\$ 0.504	\$ 0.504	\$ 0.504	\$ 0.504	\$ 0.504	\$ 0.504	\$ 5.520
X106	Design, Emerging Projects	Various	NJDOT	Various	STATE	PE	\$ 3.750	\$ 3.750	\$ 3.750	\$ 3.750	\$ 3.750	\$ 3.750	\$ 3.750	\$ 3.750	\$ 3.750	\$ 3.750	\$ 4.500	\$ 38.250
					STBGP-FLEX	DES	\$ 0.250	\$ 0.250	\$ 0.250	\$ 0.250	\$ 0.250	\$ 0.210	\$ 0.210	\$ 0.210	\$ 0.210	\$ 0.210	\$ 0.210	\$ 2.300
					STATE	DES	\$ 9.000	\$ 9.000	\$ 9.000	\$ 9.000	\$ 9.000	\$ 9.000	\$ 9.000	\$ 9.000	\$ 9.000	\$ 9.000	\$ 9.000	\$ 10.500
05342	Design, Geotechnical Engineering Tasks	Various	NJDOT	Various	STATE	DES	\$ 0.375	\$ 0.375	\$ 0.375	\$ 0.375	\$ 0.375	\$ 0.375	\$ 0.375	\$ 0.375	\$ 0.375	\$ 0.500	\$ 3.875	
X197	Disadvantaged Business Enterprise	Various	NJDOT	Various	STBGP-FLEX	EC	\$ 0.250	\$ 0.250	\$ 0.250	\$ 0.250	\$ 0.250	\$ 0.210	\$ 0.210	\$ 0.210	\$ 0.210	\$ 0.210	\$ 2.300	
X154D	Drainage Rehabilitation and Maintenance	Various	NJDOT	Various	STBGP-FLEX	EC	\$ 23.000	\$ 23.000	\$ 23.000	\$ 23.000	\$ 23.000	\$ 9.660	\$ 9.660	\$ 9.660	\$ 9.660	\$ 9.660	\$ 163.300	
X154	Drainage Rehabilitation and Maintenance, State	Various	NJDOT	Various	STATE	ERC	\$ 14.000	\$ 24.250	\$ 17.000	\$ 19.000	\$ 20.000	\$ 19.000	\$ 20.000	\$ 19.000	\$ 30.000	\$ 46.000	\$ 228.250	
X241	Electrical Facilities	Various	NJDOT	Various	STATE	EC	\$ 4.000	\$ 4.500	\$ 4.500	\$ 4.500	\$ 4.500	\$ 4.500	\$ 4.500	\$ 4.500	\$ 4.500	\$ 8.000	\$ 48.000	
4324	Electrical Load Center Replacement, Statewide	Various	NJDOT	Various	STATE	ERC	\$ 4.000	\$ 4.500	\$ 4.500	\$ 4.500	\$ 4.500	\$ 4.500	\$ 4.500	\$ 4.500	\$ 4.500	\$ 8.000	\$ 48.000	
17360	Emergency Management and Transportation Security Support	Various	NJDOT	Various	STATE	ERC	\$ 1.125	\$ 1.125	\$ 1.125	\$ 1.125	\$ 1.125	\$ 1.125	\$ 1.125	\$ 1.125	\$ 1.125	\$ 1.500	\$ 11.625	
X75	Environmental Investigations	Various	NJDOT	Various	STATE	EC	\$ 5.625	\$ 5.625	\$ 5.625	\$ 5.625	\$ 5.625	\$ 5.625	\$ 5.625	\$ 5.625	\$ 5.625	\$ 7.500	\$ 58.125	
03309	Environmental Project Support	Various	NJDOT	Various	STATE	ERC	\$ 0.900	\$ 0.900	\$ 0.900	\$ 0.900	\$ 0.900	\$ 0.900	\$ 0.900	\$ 0.900	\$ 0.900	\$ 1.200	\$ 9.300	
X15	Equipment (Vehicles, Construction, Safety)	Various	NJDOT	Various	STATE	EC	\$ 12.000	\$ 14.250	\$ 14.250	\$ 14.250	\$ 14.250	\$ 14.250	\$ 14.250	\$ 14.250	\$ 14.250	\$ 20.000	\$ 146.000	
X15A	Equipment, Snow and Ice Removal	Various	NJDOT	Various	STATE	EC	\$ 3.000	\$ 3.000	\$ 3.000	\$ 3.000	\$ 3.000	\$ 3.000	\$ 3.000	\$ 3.000	\$ 3.000	\$ 4.000	\$ 31.000	
00377	Ferry Program	Various	NJDOT	Various	FBP	ERC	\$ 4.000	\$ 4.000	\$ 4.000	\$ 4.000	\$ 4.000	\$ 4.000	\$ 4.000	\$ 4.000	\$ 4.000	\$ 4.000	\$ 40.000	

FFY 2026-2035 Executive Summary
NJDOT Statewide Projects & Programs

Approved September 22, 2025

DBNUM	PROJECT NAME	COUNTY	SPONSOR	MUNICIPALITY	FUND	PHASE	2026	2027	2028	2029	2030	2031	2032	2033	2034	2035	TOTAL
DBNUM	PROJECT NAME	COUNTY	SPONSOR	MUNICIPALITY	FUND	PHASE	2026	2027	2028	2029	2030	2031	2032	2033	2034	2035	TOTAL
X201	Guiderail Upgrade	Various	NJDOT	Various	NHPP	ERC	\$ 50.000	\$ 50.000	\$ 50.000	\$ 50.000	\$ 50.000	\$ 8.400	\$ 8.400	\$ 8.400	\$ 8.400	\$ 8.400	\$ 292.000
97008	High-Mast Light Poles	Various	NJDOT	Various	NHPP	ERC	\$ 1.000	\$ 1.000	\$ 1.000	\$ 1.000	\$ 1.000	\$ 0.840	\$ 0.840	\$ 0.840	\$ 0.840	\$ 0.840	\$ 9.200
					STBGP-FLEX	ERC	\$ 1.000	\$ 1.000	\$ 1.000	\$ 1.000	\$ 1.000	\$ 0.840	\$ 0.840	\$ 0.840	\$ 0.840	\$ 0.840	\$ 9.200
09388	Highway Safety Improvement Program Planning	Various	NJDOT	Various	HSIP	PLS	\$ 10.000	\$ 10.000	\$ 10.000	\$ 10.000	\$ 10.000	\$ 10.000	\$ 10.000	\$ 10.000	\$ 10.000	\$ 10.000	\$ 100.000
X2500	Information Technology Support	Various	NJDOT	Various	STATE	EC	\$ 5.000	\$ 5.000	\$ 5.000	\$ 5.000	\$ 5.000	\$ 5.000	\$ 5.000	\$ 5.000	\$ 5.000	\$ 5.000	\$ 50.000
15343	Intelligent Traffic Signal Systems	Various	NJDOT	Various	STBGP-FLEX	EC	\$ 3.500	\$ 3.500	\$ 3.500	\$ 3.500	\$ 3.500	\$ 2.940	\$ 2.940	\$ 2.940	\$ 2.940	\$ 2.940	\$ 32.200
					CMAQ	ERC	\$ 10.262	\$ 5.519	\$ 8.073	\$ 8.776	\$ 9.827	\$ 9.583	\$ 9.335	\$ 10.262	\$ 10.300	\$ 10.500	\$ 92.437
					CR-FLEX	ERC	\$ 10.246	\$ 10.471	\$ 10.701	\$ 10.935	\$ 11.173	\$ 11.417	\$ 11.665	\$ 11.919	\$ 12.177	\$ 12.440	\$ 113.144
13304	Intelligent Transportation System Resource Center	Various	NJDOT	Various	STBGP-FLEX	EC	\$ 3.500	\$ 3.500	\$ 3.500	\$ 3.500	\$ 3.500	\$ 2.940	\$ 2.940	\$ 2.940	\$ 2.940	\$ 2.940	\$ 32.200
X151	Interstate Service Facilities	Various	NJDOT	Various	STATE	EC	\$ 0.563	\$ 0.563	\$ 0.563	\$ 0.563	\$ 0.563	\$ 0.563	\$ 0.563	\$ 0.563	\$ 0.563	\$ 0.563	\$ 5.813
23314	ITS Safety Program	Various	NJDOT	Various	HSIP	ERC	\$ 4.000	\$ 4.000	\$ 4.000	\$ 4.000	\$ 4.000	\$ 4.000	\$ 4.000	\$ 4.000	\$ 4.000	\$ 4.000	\$ 40.000
13305	Job Order Contracting Infrastructure Repairs, Statewide	Various	NJDOT	Various	NHPP	EC	\$ 18.000	\$ 18.000	\$ 18.000	\$ 18.000	\$ 18.000	\$ 15.120	\$ 15.120	\$ 15.120	\$ 15.120	\$ 15.120	\$ 165.600
					STATE	EC	\$ 15.000	\$ 15.000	\$ 15.000	\$ 15.000	\$ 15.000	\$ 15.000	\$ 15.000	\$ 15.000	\$ 15.000	\$ 20.000	\$ 155.000
X137	Legal Costs for Right of Way Condemnation	Various	NJDOT	Various	STATE	EC	\$ 2.075	\$ 2.075	\$ 2.075	\$ 2.075	\$ 2.075	\$ 2.075	\$ 2.075	\$ 2.075	\$ 2.075	\$ 2.075	\$ 20.750
X186	Local Aid, Infrastructure Fund	Various	Local Lead	Various	STATE	ERC	\$ 7.500	\$ 7.500	\$ 7.500	\$ 7.500	\$ 7.500	\$ 7.500	\$ 7.500	\$ 7.500	\$ 7.500	\$ 7.500	\$ 75.000
X186B	Local Aid, State Transportation Infrastructure Bank	Various	Local Lead	Various	STATE	ERC	\$ 20.500	\$ 20.500	\$ 20.500	\$ 20.500	\$ 20.500	\$ 20.500	\$ 20.500	\$ 20.500	\$ 20.500	\$ 20.500	\$ 205.000
8387	Local Bridges, Future Needs	Various	NJDOT	Various	STATE	ERC	\$ 44.000	\$ 44.000	\$ 44.000	\$ 44.000	\$ 44.000	\$ 44.000	\$ 44.000	\$ 44.000	\$ 44.000	\$ 44.000	\$ 440.000
17390	Local Freight Impact Fund	Various	NJDOT	Various	STATE	ERC	\$ 28.000	\$ 28.000	\$ 28.000	\$ 28.000	\$ 28.000	\$ 28.000	\$ 28.000	\$ 28.000	\$ 28.000	\$ 28.000	\$ 280.000
X98Z	Local Municipal Aid, Urban Aid	Various	Local Lead	Various	STATE	ERC	\$ 10.000	\$ 10.000	\$ 10.000	\$ 10.000	\$ 10.000	\$ 10.000	\$ 10.000	\$ 10.000	\$ 10.000	\$ 10.000	\$ 100.000
01309	Maritime Transportation System	Various	NJDOT	Various	STATE	EC	\$ 20.000	\$ 20.000	\$ 15.000	\$ 15.000	\$ 15.000	\$ 15.000	\$ 15.000	\$ 15.000	\$ 15.000	\$ 20.000	\$ 165.000
7332	Minority and Women Workforce Training Set Aside	Various	NJDOT	Various	STATE	EC	\$ 1.125	\$ 1.125	\$ 1.125	\$ 1.000	\$ 1.000	\$ 1.000	\$ 1.000	\$ 1.000	\$ 1.125	\$ 1.125	\$ 10.625
13306	Mobility and Systems Engineering Program	Various	NJDOT	Various	NHPP	EC	\$ 20.000	\$ 20.000	\$ 20.000	\$ 20.000	\$ 20.000	\$ 16.800	\$ 16.800	\$ 16.800	\$ 16.800	\$ 16.800	\$ 184.000
					STATE	EC	\$ 2.000	\$ 2.250	\$ 2.250	\$ 2.250	\$ 2.250	\$ 2.250	\$ 2.250	\$ 2.250	\$ 2.250	\$ 4.000	\$ 24.000
X233	Motor Vehicle Crash Record Processing	Various	NJDOT	Various	HSIP	PLS	\$ 6.400	\$ 6.400	\$ 6.400	\$ 6.400	\$ 6.400	\$ 6.400	\$ 6.400	\$ 6.400	\$ 6.400	\$ 6.400	\$ 64.000
X34	New Jersey Rail Freight Assistance Program	Various	NJDOT	Various	STATE	EC	\$ 25.000	\$ 25.000	\$ 25.000	\$ 25.000	\$ 25.000	\$ 25.000	\$ 25.000	\$ 25.000	\$ 25.000	\$ 25.000	\$ 250.000
X200C	New Jersey Scenic Byways Program	Various	NJDOT	Various	TA-FLEX	ERC	\$ 0.500	\$ 0.500	\$ 0.500	\$ 0.500	\$ 0.500	\$ 0.500	\$ 0.500	\$ 0.500	\$ 0.500	\$ 0.500	\$ 5.000
99372	Orphan Bridge Reconstruction	Various	NJDOT	Various	STATE	EC	\$ 1.750		\$ 2.250		\$ 2.250		\$ 2.250		\$ 2.250	\$ 10.000	\$ 20.750
X28B	Park and Ride/Transportation Demand Management Program	Various	NJDOT	Various	STATE	EC	\$ 0.500	\$ 0.525	\$ 0.525	\$ 0.525	\$ 0.525	\$ 0.525	\$ 0.525	\$ 0.525	\$ 0.525	\$ 0.700	\$ 5.400
X51	Pavement Preservation	Various	NJDOT	Various	NHPP	ERC	\$ 1.500	\$ 1.500	\$ 1.500	\$ 1.500	\$ 1.500	\$ 1.260	\$ 1.260	\$ 1.260	\$ 1.260	\$ 1.260	\$ 13.800
X29	Physical Plant	Various	NJDOT	Various	STATE	ERC	\$ 17.500	\$ 20.000	\$ 30.000	\$ 30.000	\$ 30.000	\$ 30.000	\$ 30.000	\$ 30.000	\$ 30.000	\$ 30.000	\$ 277.500
X140	Planning and Research	Various	NJDOT	Various	SPR	PLS	\$ 6.831	\$ 7.368	\$ 7.915	\$ 8.473	\$ 9.043	\$ 9.624	\$ 10.216	\$ 10.820	\$ 11.437	\$ 12.066	\$ 93.793
					STATE	PLS	\$ 1.250	\$ 1.500	\$ 1.500	\$ 1.500	\$ 1.500	\$ 1.500	\$ 1.500	\$ 1.500	\$ 1.500	\$ 2.000	\$ 15.250
X30	Planning, Federal Aid	Various	NJDOT	Various	LTAP	PLS	\$ 0.021	\$ 0.021	\$ 0.021	\$ 0.021	\$ 0.021	\$ 0.021	\$ 0.021	\$ 0.021	\$ 0.021	\$ 0.021	\$ 0.210
					SPR	PLS	\$ 20.000	\$ 20.000	\$ 20.000	\$ 20.000	\$ 20.000	\$ 20.000	\$ 20.000	\$ 20.000	\$ 20.000	\$ 20.000	\$ 200.000
					STBGP-FLEX	PLS	\$ 12.000	\$ 12.000	\$ 12.000	\$ 12.000	\$ 12.000	\$ 10.080	\$ 10.080	\$ 10.080	\$ 10.080	\$ 10.080	\$ 110.400
X135	Pre-Apprenticeship Training Program for Minorities and Women	Various	NJDOT	Various	STBGP-FLEX	EC	\$ 0.500	\$ 0.500	\$ 0.500	\$ 0.500	\$ 0.500	\$ 0.420	\$ 0.420	\$ 0.420	\$ 0.420	\$ 0.420	\$ 4.600
X10	Program Implementation Costs, NJDOT	Various	NJDOT	Various	STATE	EC	\$ 112.250	\$ 115.000	\$ 115.000	\$ 120.000	\$ 120.000	\$ 120.000	\$ 120.000	\$ 120.000	\$ 120.000	\$ 120.000	\$ 1,182.250
10344	Project Development: Concept Development	Various	NJDOT	Various	STATE	CD	\$ 3.000	\$ 6.000	\$ 6.000	\$ 4.000	\$ 4.000	\$ 4.000	\$ 4.000	\$ 4.000	\$ 9.000	\$ 9.000	\$ 53.000
22353	PROTECT	Various	NJDOT	Various	PFP	ERC	\$ 35.537	\$ 36.268	\$ 37.013	\$ 37.773	\$ 38.549	\$ 39.340	\$ 40.146	\$ 40.969	\$ 41.809	\$ 42.665	\$ 390.069
					PFP	PLS	\$ 1.000	\$ 1.000	\$ 1.000	\$ 1.000	\$ 1.000	\$ 1.000	\$ 1.000	\$ 1.000	\$ 1.000	\$ 1.000	\$ 10.000
X35A	Rail-Highway Grade Crossing Program, State	Various	NJDOT	Various	STATE	CON	\$ 3.000	\$ 3.750	\$ 3.750	\$ 3.750	\$ 3.750	\$ 3.750	\$ 3.750	\$ 3.750	\$ 3.750	\$ 5.000	\$ 38.000
X35A1	Rail-Highway Grade Crossing Program, Federal	Various	NJDOT	Various	RHC	EC	0.267	0.272	0.277	0.283	0.289	0.294	0.300	0.306	0.312	0.319	\$ 2.919
X144	Regional Action Program	Various	NJDOT	Various	STATE	EC	\$ 3.000	\$ 3.000	\$ 3.000	\$ 1.500	\$ 1.500	\$ 1.500	\$ 1.500	\$ 1.500	\$ 1.500	\$ 3.000	\$ 21.000
X03A	Restriping Program & Line Reflectivity Management System	Various	NJDOT	Various	STBGP-FLEX	EC	\$ 25.000	\$ 25.000	\$ 25.000	\$ 25.000	\$ 25.000	\$ 21.000	\$ 21.000	\$ 21.000	\$ 21.000	\$ 21.000	\$ 230.000
X03E	Resurfacing Program	Various	NJDOT	Various	STATE	EC	\$ 60.000	\$ 68.085	\$ 68.085	\$ 68.085	\$ 68.085	\$ 68.085	\$ 68.085	\$ 68.085	\$ 89.335	\$ 90.780	\$ 716.710
99327A	Resurfacing, Federal	Various	NJDOT	Various	NHPP	ERC	\$ 10.000	\$ 10.000	\$ 10.000	\$ 10.000	\$ 10.000	\$ 8.400	\$ 8.400	\$ 8.400	\$ 8.400	\$ 8.400	\$ 92.000
05340	Right of Way Full-Service Consultant Term Agreements	Various	NJDOT	Various	STATE	ROW	\$ 0.038	\$ 0.038	\$ 0.038	\$ 0.038	\$ 0.038	\$ 0.038	\$ 0.038	\$ 0.038	\$ 0.038	\$ 0.050	\$ 0.388
					STBGP-FLEX	ROW	\$ 0.300	\$ 0.300	\$ 0.300	\$ 0.300	\$ 0.300	\$ 0.252	\$ 0.252	\$ 0.252	\$ 0.252	\$ 0.252	\$ 2.760
X152	Rockfall Mitigation	Various	NJDOT	Various	NHPP	ERC	\$ 13.800	\$ 6.800	\$ 1.000								\$ 21.600
20342	Route 40/322, Bridge over Inside Thorofare	Atlantic	NJDOT	Atlantic City	NHPP	CON		\$ 24.500									\$ 24.500
19369	Route 9, Chapman Blvd to Route 30 (Whitehorse Pike)	Atlantic	NJDOT	Linwood City	NHPP	CON						\$ 117.000					\$ 117.000
					NHPP	DES			\$ 14.000								\$ 14.000
					NHPP	ROW			\$ 12.000								\$ 12.000
					NHPP	UTI					\$ 12.000						\$ 12.000
15400A	Route 9, Tuckahoe Rd (CR 631) to Roosevelt Blvd (CR 623)	Cape May	NJDOT	Upper Twp	NHPP	CON				\$ 12.500							\$ 12.500
					NHPP	DES	\$ 3.500										\$ 3.500
					NHPP	ROW	\$ 2.200										\$ 2.200
14428	Route 30, Bridge over Duck Thorofare	Atlantic	NJDOT	Atlantic City	BFP	CON	\$ 20.450										\$ 20.450
16350	Route 30, Bridge over Newfound Thorofare	Atlantic	NJDOT	Atlantic City	BFP	ROW	\$ 0.700										\$ 0.700
					NHPP	CON		\$ 37.400									\$ 37.400
196A5	Route 40/322, Median Closures, Oakcrest Avenue to Spencer Avenue	Atlantic	NJDOT	Hamilton Twp	NHPP	CON			\$ 9.000								\$ 9.000
					NHPP	ROW	\$ 5.000										\$ 5.000

DBNUM	PROJECT NAME	COUNTY	SPONSOR	MUNICIPALITY	FUND	PHASE	2026	2027	2028	2029	2030	2031	2032	2033	2034	2035	TOTAL	
DBNUM	PROJECT NAME	COUNTY	SPONSOR	MUNICIPALITY	FUND	PHASE	2026	2027	2028	2029	2030	2031	2032	2033	2034	2035	TOTAL	
17303	Route 47, Bridge over Dennis Creek	Cape May	NJDOT	Dennis Twp	NHPP	CON			\$ 5.050								\$ 5.050	
	ROW						\$ 0.300											
20346	Route 47, Bridge over Grassy Sound	Cape May	NJDOT	Lower Twp	BFP	CON	\$ 26.600										\$ 26.600	
15340	Route 47, Henderson Avenue to High Street	Cumberland	NJDOT	Millville City	NHPP	CON								\$ 11.700			\$ 11.700	
						DES	\$ 2.700										\$ 2.700	
						ROW		\$ 1.800										\$ 1.800
						UTI			\$ 2.100									\$ 2.100
12320	Route 47, Nummytown Mill Pond Dam	Cape May	NJDOT	Middle Twp	NHPP	CON			\$ 10.600							\$ 10.600		
						ROW	\$ 2.000										\$ 2.000	
17329	Route 50, Bridge over Cedar Swamp Creek	Cape May	NJDOT	Upper Twp	BFP	ERC	\$ 40.250										\$ 40.250	
					NHPP	ERC	\$ 9.372										\$ 9.372	
18381	Route 50, Upper Bridge Road to Carl Road	Cape May	NJDOT	Upper Twp	STBGP-FLEX	CON	\$ 12.500										\$ 12.500	
17306	Route 55, Bridges over Route 47	Cumberland	NJDOT	Millville City	NHPP	CON		\$ 37.000									\$ 37.000	
18311	Route 9, Garden State Parkway to CR 559 (Mays Landing Road)	Atlantic	NJDOT	Somers Point City	NHPP	CON					\$ 7.850						\$ 7.850	
						ROW		\$ 0.500									\$ 0.500	
16334	Route 295 SB Ramp K to CR 551, Bridge over Route 295 SB	Salem	NJDOT	Carney's Point Twp	BFP	DES	\$ 3.000										\$ 3.000	
					NHPP	CON			\$ 13.500								\$ 13.500	
15448	Route 322, Bridge over Great Egg Harbor River	Atlantic	NJDOT	Hamilton Twp	BFP	ROW	\$ 0.500										\$ 0.500	
					NHPP	CON					\$ 16.000							\$ 16.000
99358	Safe Routes to School Program	Various	Local Lead	Various	TA-FLEX	EC	\$ 7.587	\$ 7.587	\$ 7.587	\$ 7.587	\$ 7.587	\$ 7.587	\$ 7.587	\$ 7.587	\$ 7.587	\$ 7.587	\$ 75.870	
99358B	Safe Routes to School Program, non-infrastructure	Various	Local Lead	Various	STATE	ERC	\$ 1.000	\$ 1.000	\$ 1.000	\$ 1.000	\$ 1.000	\$ 1.000	\$ 1.000	\$ 1.000	\$ 1.000	\$ 1.000	\$ 10.000	
06402	Safe Streets to Transit Program	Various	NJDOT	Various	STATE	EC	\$ 1.000	\$ 1.000	\$ 1.000	\$ 1.000	\$ 1.000	\$ 1.000	\$ 1.000	\$ 1.000	\$ 1.000	\$ 1.000	\$ 10.000	
19370	Safety Programs	Various	NJDOT	Various	HSIP	ERC	\$ 4.361	\$ 10.124	\$ 5.615	\$ 12.933	\$ 14.380	\$ 15.855	\$ 17.360	\$ 18.896	\$ 20.461	\$ 22.059	\$ 142.044	
					HSIP-VRUS	ERC	\$ 12.028	\$ 5.269	\$ 5.914	\$ 12.765	\$ 13.020	\$ 13.280	\$ 13.546	\$ 13.817	\$ 14.093	\$ 14.375	\$ 118.107	
					STATE	ERC	\$ 0.188	\$ 1.250	\$ 1.250	\$ 3.250	\$ 5.250	\$ 5.250	\$ 5.250	\$ 5.250	\$ 5.250	\$ 5.250	\$ 37.438	
13307	Salt Storage Facilities - Statewide	Various	NJDOT	Various	STATE	ERC	\$ 2.000	\$ 2.250	\$ 2.250	\$ 2.250	\$ 2.250	\$ 2.250	\$ 2.250	\$ 2.250	\$ 2.250	\$ 3.000	\$ 23.000	
X239	Sign Structure Inspection Program	Various	NJDOT	Various	STATE	EC	\$ 1.000	\$ 1.575	\$ 1.575	\$ 1.575	\$ 1.575	\$ 1.575	\$ 1.575	\$ 1.575	\$ 1.575	\$ 2.500	\$ 16.100	
X239A	Sign Structure Rehabilitation/Replacement Program	Various	NJDOT	Various	STBGP-FLEX	ERC	\$ 1.000	\$ 1.000	\$ 1.000	\$ 1.000	\$ 1.000	\$ 0.840	\$ 0.840	\$ 0.840	\$ 0.840	\$ 0.840	\$ 9.200	
22319	Sign Structure Replacement Contract 2021-2	Various	NJDOT	Various	NHPP	CON		\$ 6.175									\$ 6.175	
X39	Signs Program, Statewide	Various	NJDOT	Various	STATE	EC	\$ 3.000	\$ 3.000	\$ 3.000	\$ 3.000	\$ 3.000	\$ 3.000	\$ 3.000	\$ 3.000	\$ 3.000	\$ 6.000	\$ 33.000	
19600	Smart and Connect Corridors Program	Various	NJDOT	Various	STATE	ERC	\$ 5.000	\$ 5.250	\$ 5.250	\$ 5.250	\$ 5.250	\$ 5.250	\$ 5.250	\$ 5.250	\$ 5.250	\$ 8.000	\$ 55.000	
X160	Solid and Hazardous Waste Cleanup, Reduction and Disposal	Various	NJDOT	Various	STATE	EC	\$ 1.500	\$ 1.500	\$ 1.500	\$ 1.500	\$ 1.500	\$ 1.500	\$ 1.500	\$ 1.500	\$ 1.500	\$ 2.000	\$ 15.500	
23313	Specified Safety Program	Various	NJDOT	Various	HSIP	PLS	\$ 2.000	\$ 2.000	\$ 2.000	\$ 2.000	\$ 2.000	\$ 2.000	\$ 2.000	\$ 2.000	\$ 2.000	\$ 2.000	\$ 20.000	
X10A	Staff Augmentation	Various	NJDOT	Various	STATE	ERC	\$ 0.200	\$ 0.750	\$ 0.750	\$ 0.750	\$ 0.750	\$ 0.750	\$ 0.750	\$ 0.750	\$ 0.750	\$ 1.000	\$ 7.200	
X150	State Police Enforcement and Safety Services	Various	NJDOT	Various	STATE	EC	\$ 20.000	\$ 20.000	\$ 20.000	\$ 20.000	\$ 20.000	\$ 20.000	\$ 20.000	\$ 20.000	\$ 20.000	\$ 20.000	\$ 200.000	
					STBGP-FLEX	EC	\$ 0.250	\$ 0.250	\$ 0.250	\$ 0.250	\$ 0.250	\$ 0.250	\$ 0.210	\$ 0.210	\$ 0.210	\$ 0.210	\$ 0.210	\$ 2.300
13308	Statewide Traffic Operations and Support Program	Various	NJDOT	Various	NHPP	EC	\$ 17.000	\$ 17.000	\$ 17.000	\$ 17.000	\$ 17.000	\$ 14.280	\$ 14.280	\$ 14.280	\$ 14.280	\$ 14.280	\$ 156.400	
17353	Storm Water Asset Management	Various	NJDOT	Various	STBGP-FLEX	ERC	\$ 3.000	\$ 3.000	\$ 3.000	\$ 3.000	\$ 3.000	\$ 2.520	\$ 2.520	\$ 2.520	\$ 2.520	\$ 2.520	\$ 27.600	
					TA-FLEX	ERC	\$ 1.000	\$ 1.000	\$ 1.000	\$ 1.000	\$ 1.000	\$ 1.000	\$ 1.000	\$ 1.000	\$ 1.000	\$ 1.000	\$ 1.000	\$ 10.000
14300	Title VI and Nondiscrimination Supporting Activities	Various	NJDOT	Various	STATE	EC	\$ 0.075	\$ 0.075	\$ 0.075	\$ 0.075	\$ 0.075	\$ 0.075	\$ 0.075	\$ 0.075	\$ 0.075	\$ 0.175	\$ 0.850	
X66	Traffic Monitoring Systems	Various	NJDOT	Various	STATE	EC	\$ 1.000	\$ 1.118	\$ 1.118	\$ 1.118	\$ 1.118	\$ 1.118	\$ 1.118	\$ 1.118	\$ 1.118	\$ 1.490	\$ 11.430	
					NHPP	PLS	\$ 18.000	\$ 18.000	\$ 18.000	\$ 18.000	\$ 18.000	\$ 10.080	\$ 10.080	\$ 10.080	\$ 10.080	\$ 10.080	\$ 140.400	
X47	Traffic Signal Replacement	Various	NJDOT	Various	STATE	EC	\$ 7.000	\$ 7.500	\$ 7.500	\$ 7.500	\$ 7.500	\$ 7.500	\$ 7.500	\$ 7.500	\$ 12.000	\$ 79.000		
X244	Training and Employee Development	Various	NJDOT	Various	STBGP-FLEX	EC	\$ 2.500	\$ 2.500	\$ 2.500	\$ 2.500	\$ 2.500	\$ 2.100	\$ 2.100	\$ 2.100	\$ 2.100	\$ 2.100	\$ 23.000	
01316	Transit Village Program	Various	NJDOT	Various	STATE	EC	\$ 1.000	\$ 1.000	\$ 1.000	\$ 1.000	\$ 1.000	\$ 1.000	\$ 1.000	\$ 1.000	\$ 1.000	\$ 1.000	\$ 10.000	
X107	Transportation Alternatives Program	Various	NJDOT	Various	TA-AC	ERC	\$ 0.585	\$ 0.597	\$ 0.609	\$ 0.621	\$ 0.633	\$ 0.646	\$ 0.659	\$ 0.672	\$ 0.686	\$ 0.699	\$ 6.407	
					TA-B50K200K	ERC	\$ 0.173	\$ 0.177	\$ 0.180	\$ 0.184	\$ 0.187	\$ 0.191	\$ 0.195	\$ 0.199	\$ 0.203	\$ 0.207	\$ 1.896	
					TA-B5K50K	ERC	\$ 0.475	\$ 0.485	\$ 0.494	\$ 0.504	\$ 0.514	\$ 0.525	\$ 0.535	\$ 0.546	\$ 0.557	\$ 0.568	\$ 5.203	
					TA-FLEX	ERC	\$ 1.719	\$ 1.975	\$ 2.237	\$ 2.503	\$ 2.775	\$ 3.052	\$ 3.335	\$ 3.623	\$ 3.917	\$ 4.218	\$ 29.354	
					TA-LSK	ERC	\$ 1.160	\$ 1.183	\$ 1.206	\$ 1.231	\$ 1.255	\$ 1.280	\$ 1.306	\$ 1.332	\$ 1.359	\$ 1.386	\$ 12.698	
X126	Transportation Research Technology	Various	NJDOT	Various	STATE	EC	\$ 1.000	\$ 1.275	\$ 1.275	\$ 1.275	\$ 1.275	\$ 1.275	\$ 1.275	\$ 1.275	\$ 1.275	\$ 1.275	\$ 12.475	
23315	Tunnel Inspection, NTIS	Various	NJDOT	Various	NHPP	EC	\$ 0.100	\$ 0.325	\$ 0.100	\$ 0.650	\$ 0.100	\$ 0.672	\$ 0.084	\$ 0.756	\$ 0.084	\$ 0.756	\$ 3.627	
X11	Unanticipated Design, Right of Way and Construction Expenses, State	Various	NJDOT	Various	STATE	ERC	\$ 52.385	\$ 64.147	\$ 65.112	\$ 64.012	\$ 62.762	\$ 62.012	\$ 62.762	\$ 62.012	\$ 63.287	\$ 63.887	\$ 622.378	
X182	Utility Reconnaissance and Relocation	Various	NJDOT	Various	STATE	EC	\$ 1.880	\$ 1.880	\$ 1.880	\$ 1.880	\$ 1.880	\$ 1.880	\$ 1.880	\$ 1.880	\$ 1.880	\$ 2.500	\$ 19.420	
19332	Vegetation Safety Management Program	Various	NJDOT	Various	HSIP	ERC	\$ 3.000	\$ 3.000	\$ 3.000	\$ 3.000	\$ 3.000	\$ 3.000	\$ 3.000	\$ 3.000	\$ 3.000	\$ 3.000	\$ 30.000	
X199	Youth Employment and STEM Outreach Solutions	Various	NJDOT	Various	STBGP-FLEX	EC	\$ 0.350	\$ 0.350	\$ 0.350	\$ 0.350	\$ 0.350	\$ 0.294	\$ 0.294	\$ 0.294	\$ 0.294	\$ 0.294	\$ 3.220	

NUM	PROJECT NAME	COUNTY	SPONSOR	MUNICIPALITY	FUND	PHASE	2026	2027	2028	2029	2030	2031	2032	2033	2034	2035	TOTAL
DBNUM	PROJECT NAME	COUNTY	SPONSOR	MUNICIPALITY	FUND	PHASE	2026	2027	2028	2029	2030	2031	2032	2033	2034	2035	TOTAL
T143	ADA--Platforms/Stations	Various	NJ TRANSIT	Various	STATE	ERC	\$ 0.035	\$ 0.035	\$ 0.035	\$ 0.035	\$ 0.035	\$ 0.035	\$ 0.035	\$ 0.035	\$ 0.035	\$ 0.035	\$ 0.350
T05	Bridge and Tunnel Rehabilitation	Various	NJ TRANSIT	Various	STATE	ERC	\$ 0.206	\$ 0.206	\$ 0.206	\$ 0.206	\$ 0.206	\$ 0.206	\$ 0.206	\$ 0.206	\$ 0.206	\$ 0.206	\$ 2.060
T111	Bus Acquisition Program	Various	NJ TRANSIT	Various	SECT 5307	CAP	\$ 4.200	\$ 6.300	\$ 10.288	\$ 0.439							\$ 21.227
					SECT 5339	CAP	\$ 1.388	\$ 1.431	\$ 1.460	\$ 1.490	\$ 1.521	\$ 1.552	\$ 1.584	\$ 1.616	\$ 1.649	\$ 1.682	\$ 15.373
					STATE	CAP	\$ 6.103	\$ 9.375	\$ 9.266	\$ 11.635	\$ 11.710	\$ 11.710	\$ 11.710	\$ 11.710	\$ 11.710	\$ 2.960	\$ 97.889
T06	Bus Passenger Facilities/Park and Ride	Various	NJ TRANSIT	Various	STATE	ERC	\$ 0.056	\$ 0.056	\$ 0.056	\$ 0.056	\$ 0.056	\$ 0.056	\$ 0.056	\$ 0.056	\$ 0.056	\$ 0.560	
T08	Bus Support Facilities and Equipment	Various	NJ TRANSIT	Various	SECT 5307	ERC	\$ 0.840	\$ 0.023		\$ 6.228	\$ 10.388	\$ 13.113	\$ 13.765	\$ 14.430	\$ 15.109	\$ 15.801	\$ 89.697
					SECT 5339	ERC	\$ 0.035	\$ 0.035	\$ 0.035	\$ 0.035	\$ 0.035	\$ 0.035	\$ 0.035	\$ 0.035	\$ 0.035	\$ 0.035	\$ 0.350
					STATE	ERC	\$ 0.560	\$ 0.581	\$ 0.581	\$ 0.581	\$ 0.581	\$ 0.581	\$ 0.581	\$ 0.581	\$ 0.581	\$ 0.581	\$ 5.789
T68	Capital Program Implementation	Various	NJ TRANSIT	Various	STATE	ERC	\$ 2.800	\$ 2.800	\$ 2.800	\$ 2.800	\$ 2.800	\$ 2.800	\$ 2.800	\$ 2.800	\$ 2.800	\$ 28.000	
T515	Casino Revenue Fund	Various	NJ TRANSIT	Various	CASINO REVENUE	CAP	\$ 3.226	\$ 3.579	\$ 3.686	\$ 3.797	\$ 3.911	\$ 4.028	\$ 4.149	\$ 4.274	\$ 4.402	\$ 4.534	\$ 39.586
T13	Claims support	Various	NJ TRANSIT	Various	STATE	EC	\$ 0.007	\$ 0.007	\$ 0.007	\$ 0.007	\$ 0.007	\$ 0.007	\$ 0.007	\$ 0.007	\$ 0.007	\$ 0.007	\$ 0.070
T170	Cumberland County Bus Program	Cumberland	NJ TRANSIT	Various	SECT 5307	CAP	\$ 1.020	\$ 1.020	\$ 1.020	\$ 1.020	\$ 1.020	\$ 1.020	\$ 1.020	\$ 1.020	\$ 1.020	\$ 1.020	\$ 10.200
T16	Environmental Compliance	Various	NJ TRANSIT	Various	STATE	ERC	\$ 0.210	\$ 0.210	\$ 0.210	\$ 0.210	\$ 0.210	\$ 0.210	\$ 0.210	\$ 0.210	\$ 0.210	\$ 0.210	\$ 2.100
T43	High Speed Track Program	Various	NJ TRANSIT	Various	STATE	ERC	\$ 0.032	\$ 0.032	\$ 0.032	\$ 0.032	\$ 0.032	\$ 0.032	\$ 0.032	\$ 0.032	\$ 0.032	\$ 0.032	\$ 0.320
T20	Immediate Action Program	Various	NJ TRANSIT	Various	STATE	ERC	\$ 3.672	\$ 4.510	\$ 5.910	\$ 4.856	\$ 4.695	\$ 7.439	\$ 10.836	\$ 9.280	\$ 10.393	\$ 19.654	\$ 81.245
T53E	Locomotive Overhaul	Various	NJ TRANSIT	Various	SECT 5337	CAP	\$ 0.053	\$ 0.050	\$ 0.124	\$ 0.065							\$ 0.292
					STATE	CAP	\$ 0.031	\$ 0.031	\$ 0.031	\$ 0.031	\$ 0.031	\$ 0.031	\$ 0.031	\$ 0.031	\$ 0.031	\$ 0.031	\$ 0.310
T122	Miscellaneous	Various	NJ TRANSIT	Various	STATE	ERC	\$ 0.035	\$ 0.035	\$ 0.035	\$ 0.035	\$ 0.035	\$ 0.035	\$ 0.035	\$ 0.035	\$ 0.035	\$ 0.035	\$ 0.350
T55	Other Rail Station/Terminal Improvements	Various	NJ TRANSIT	Various	STATE	ERC	\$ 0.424	\$ 0.424	\$ 0.424	\$ 0.424	\$ 0.424	\$ 0.424	\$ 0.424	\$ 0.424	\$ 0.424	\$ 0.424	\$ 4.240
T121	Physical Plant	Various	NJ TRANSIT	Various	STATE	ERC	\$ 0.637	\$ 0.637	\$ 0.637	\$ 0.637	\$ 0.637	\$ 0.637	\$ 0.637	\$ 0.637	\$ 0.637	\$ 0.637	\$ 6.370
T135	Preventive Maintenance-Bus	Various	NJ TRANSIT	Various	SECT 5307	CAP	\$ 7.372	\$ 7.372	\$ 7.372	\$ 7.372	\$ 7.372	\$ 7.372	\$ 7.372	\$ 7.372	\$ 7.372	\$ 7.372	\$ 73.720
T39	Preventive Maintenance-Rail	Various	NJ TRANSIT	Various	SECT 5307	CAP	\$ 1.019	\$ 1.019	\$ 1.019	\$ 1.019	\$ 1.019	\$ 1.019	\$ 1.019	\$ 1.019	\$ 1.019	\$ 1.019	\$ 10.190
					SECT 5337	CAP	\$ 2.065	\$ 2.065	\$ 2.065	\$ 2.065	\$ 2.065	\$ 2.065	\$ 2.065	\$ 2.065	\$ 2.065	\$ 2.065	\$ 20.650
T106	Private Carrier Equipment Program	Various	NJ TRANSIT	Various	STATE	CAP	\$ 0.210	\$ 0.210	\$ 0.210	\$ 0.210	\$ 0.210	\$ 0.210	\$ 0.210	\$ 0.210	\$ 0.210	\$ 0.210	\$ 2.100
T53G	Rail Fleet Overhaul	Various	NJ TRANSIT	Various	SECT 5307	CAP	\$ 0.914	\$ 0.449	\$ 0.533	\$ 0.341	\$ 0.305	\$ 0.305	\$ 0.305	\$ 0.037			\$ 3.189
					SECT 5337	CAP	\$ 1.115	\$ 0.518	\$ 0.699	\$ 1.109	\$ 0.800	\$ 0.885	\$ 2.151	\$ 1.209	\$ 0.789	\$ 0.615	\$ 9.890
					STATE	CAP	\$ 0.268	\$ 0.149									\$ 0.417
T903	Rail Infrastructure Resiliency	Various	NJ TRANSIT	Various	STATE	PLS	\$ 0.019	\$ 0.019	\$ 0.019	\$ 0.019	\$ 0.019					\$ 0.095	
T112	Rail Rolling Stock Procurement	Various	NJ TRANSIT	Various	CMAQ	CAP	\$ 0.930	\$ 0.930	\$ 0.930	\$ 1.536	\$ 0.930	\$ 0.930	\$ 0.930	\$ 0.930	\$ 0.930	\$ 0.930	\$ 9.906
					SECT 5307	CAP		\$ 0.091			\$ 0.039	\$ 0.212	\$ 0.212	\$ 0.481	\$ 0.517	\$ 0.517	\$ 2.069
					SECT 5337	CAP	\$ 0.197	\$ 4.655	\$ 4.657	\$ 4.086	\$ 4.844	\$ 4.844		\$ 1.031	\$ 1.540	\$ 1.806	\$ 27.660
					STATE	CAP	\$ 0.659	\$ 0.683	\$ 0.947	\$ 0.954	\$ 0.941	\$ 0.941	\$ 0.941	\$ 1.224	\$ 1.031	\$ 0.941	\$ 9.262
T902	Rail Station Resiliency	Various	NJ TRANSIT	Various	STATE	PLS	\$ 0.019	\$ 0.019	\$ 0.019	\$ 0.019	\$ 0.019					\$ 0.095	
T37	Rail Support Facilities and Equipment	Various	NJ TRANSIT	Various	SECT 5307	ERC		\$ 0.040									\$ 0.040
					SECT 5337	ERC	\$ 0.192										\$ 0.192
					STATE	ERC	\$ 0.139	\$ 0.102	\$ 0.052	\$ 0.052	\$ 0.052	\$ 0.052	\$ 0.052	\$ 0.052	\$ 0.052	\$ 0.052	\$ 0.657
T509	Safety Improvement Program	Various	NJ TRANSIT	Various	STATE	ERC	\$ 0.009	\$ 0.009	\$ 0.009	\$ 0.009	\$ 0.009	\$ 0.009	\$ 0.009	\$ 0.009	\$ 0.009	\$ 0.090	
T150	Section 5310 Program	Various	NJ TRANSIT	Various	SECT 5310	CAP	\$ 0.822	\$ 0.847	\$ 0.864	\$ 0.881	\$ 0.899	\$ 0.917	\$ 0.935	\$ 0.954	\$ 0.973	\$ 0.992	\$ 9.084
					STATE	CAP	\$ 0.123	\$ 0.123	\$ 0.123	\$ 0.123	\$ 0.123	\$ 0.123	\$ 0.123	\$ 0.123	\$ 0.123	\$ 0.123	\$ 0.123
T151	Section 5311 Program	Various	NJ TRANSIT	Various	MATCH	CAP	\$ 0.133	\$ 0.133	\$ 0.133	\$ 0.133	\$ 0.133	\$ 0.133	\$ 0.133	\$ 0.133	\$ 0.133	\$ 0.133	\$ 1.330
					SECT 5311	CAP	\$ 0.425	\$ 0.438	\$ 0.447	\$ 0.456	\$ 0.465	\$ 0.474	\$ 0.484	\$ 0.493	\$ 0.503	\$ 0.513	\$ 4.698
					STATE	CAP	\$ 0.007	\$ 0.007	\$ 0.007	\$ 0.007	\$ 0.007	\$ 0.007	\$ 0.007	\$ 0.007	\$ 0.007	\$ 0.007	\$ 0.070
T508	Security Improvements	Various	NJ TRANSIT	Various	STATE	SWI	\$ 0.313	\$ 0.173	\$ 0.173	\$ 0.173	\$ 0.173	\$ 0.173	\$ 0.173	\$ 0.173	\$ 0.173	\$ 1.870	
T50	Signals and Communications/Electric Traction Systems	Various	NJ TRANSIT	Various	STATE	ERC	\$ 0.136	\$ 0.136	\$ 0.260	\$ 0.260	\$ 0.260	\$ 0.260	\$ 0.260	\$ 0.260	\$ 0.260	\$ 2.352	
T120	Small/Special Services Program	Various	NJ TRANSIT	Various	STATE	EC	\$ 0.096	\$ 0.096	\$ 0.096	\$ 0.096	\$ 0.096	\$ 0.096	\$ 0.096	\$ 0.096	\$ 0.096	\$ 0.960	
T88	Study and Development	Various	NJ TRANSIT	Various	SECT 5307	PLS	\$ 0.020	\$ 0.093		\$ 0.077	\$ 0.174						\$ 0.364
					STATE	PLS	\$ 0.676	\$ 0.506	\$ 0.506	\$ 0.506	\$ 0.506	\$ 0.391	\$ 0.391	\$ 0.391	\$ 0.391	\$ 0.391	\$ 0.391
T500	Technology Improvements	Various	NJ TRANSIT	Various	STATE	EC	\$ 1.466	\$ 1.025	\$ 1.025	\$ 1.025	\$ 1.025	\$ 1.025	\$ 1.025	\$ 1.025	\$ 1.025	\$ 1.025	\$ 10.691
T42	Track Program	Various	NJ TRANSIT	Various	STATE	ERC	\$ 0.353	\$ 0.353	\$ 0.353	\$ 0.353	\$ 0.353	\$ 0.353	\$ 0.353	\$ 0.353	\$ 0.353	\$ 0.353	\$ 3.530
T210	Transit Enhancements/Transp Altern Prog (TAP)/Altern Transit Improv (ATI)	Various	NJ TRANSIT	Various	SECT 5307	ERC		\$ 0.268	\$ 0.268	\$ 0.268	\$ 0.268	\$ 0.268	\$ 0.268	\$ 0.268	\$ 0.268	\$ 0.268	\$ 2.412
					STATE	ERC		\$ 0.292	\$ 3.497	\$ 8.109	\$ 6.811	\$ 6.863	\$ 6.863	\$ 6.805	\$ 6.805	\$ 6.805	\$ 52.850
T300	Transit Rail Initiatives	Various	NJ TRANSIT	Various	STATE	ERC	\$ 1.698	\$ 1.698	\$ 1.698	\$ 1.698	\$ 3.152	\$ 3.152	\$ 3.152	\$ 3.152	\$ 3.152	\$ 3.152	\$ 25.704