

Minutes of the
 GILLESPIE COUNTY AIRPORT ADVISORY BOARD
 Tuesday, Jan 20, 2026
 @ Airport Terminal

| MEMBERS PRESENT: | STAFF PRESENT: | GUESTS PRESENT: |
|------------------|------------------------|-----------------|
| Steve Allen | Tony Lombardi, Manager | Joe Fritz |
| Tim Lehmborg | Bobby Watson, City | Darren Flores |
| Gwen Fullbrook | Ethan Crane | Lauren Smith |
| Paul Hannemann | Larry Hauptrief - EAA | Kraig Turpen |
| Kory Keller | | |
| Chad Ellebracht | | |
| | | |
| Absent | | |
| David Gasmire | Courtney Walker | |
| | Keith Kramer, County | |
| | | |

After attending the TFS groundbreaking ceremony, the AAB convened their regular meeting.

CALL TO ORDER

The meeting was called to order at 1:48 PM by the Chairman, Steve Allen

APPROVAL OF MINUTES

Minutes of the regular “Nov 18, 2025” meeting were approved.

AIRPORT MANAGER’S REPORT

- Upcoming Events/Court Actions – The Manager reviewed the upcoming events for the airport and the recent commissioners court actions.
 - Event Update –
 - 2026
 - Mar 17-22 – COPA Formation (Cirrus) (35a/c)
 - Mar 28 – Egg Drop (sponsored by Tango 82/Crosswind Avn) @10am
 - Apr 23-25 – T-6
 - Sept 22-26 – Cessna 120/140 Assn 2026 Convention (40 a/c)
- Court Actions – None
- T-hangars occupancy update. The Manager stated that the County T-hangars are 100% ...waiting list is at 48.

- Airport Status – the Manager reviewed the current status of the airport.

| |
|--|
| Lights (PAPIs, Beacon, Rwy Edge, Taxiway, Signs) |
| Communication (CTAF, GCO, AWOS) |
| Weather Station |
| Facilities |
| Miscellaneous (Construction, Closures, etc) |

- Airport Development Update:
 - Active Private Projects –

| # | Developer | LOI Date Rev'd | Status | Comments |
|---|--------------|----------------|--------|---|
| 1 | EPCON | 5/22/24 | PHII | DA Signed 04/03/2025 (renewed on 10/04/25)...DA expires April 1 st |
| 2 | Ladd Gardner | 1/30/25 | PHIV | Lease signed (Sept 1st) |
| 3 | Mulholland | 03/20/2025 | PHIV | Lease signed (Sept 1 st) |

- Hot Topics/ Miscellaneous Updates. Nothing reported

FLOOR

- EAA – Larry Hauptrief mentioned that the EAA held their monthly meeting last weekend. Also, Larry mentioned that the EAA gave out a scholarship local pilot student...the EAA plans to give out a couple more. They also discussed their planned “Young Eagles” events.
- Crosswind Aviation – Gwen stated they had a great December (85 flight hours flown)
- FBO – Ethan stated that FBO is doing great...maybe short-handed.
- TFS – Paul mentioned that there is one air attack aircraft deployed to T82. He also mentioned if we don't get any moisture this weekend, we might get some SEATs.
- Halo – Kraig mentioned that they just wrapped up their first year. He mentioned that business is down. He also stated that he is concerned that he only has 14 local pilots as clients.
- Tango 82 – Darren discussed the egg drop with the board.

NEW BUSINESS

- **Nothing new**

OLD BUSINESS.

- Minimum Standards Update– The manager gave a brief update...Still with the Judge for review.
- CIP Update – The Manager gave a quick update on the following CIP projects:

- Pavement Project
 - We are still waiting for TXDOT to release the RFP. Estimated start date is late Mar 2026.
- AWOS Replace Project – Completed, BUT...The manager stated that we are having minor issues with the system. The maintenance team is aware.
- Drainage Study - Field work has been completed. Garver is finalizing the report.
- Runway Eval – Work should happen within the next 2 months.
- Non CIP (ATP grant program) – Terminal Expansion – The manager stated that he submitted the grant application on Jan 15th.
- Joe Fritz lease renewal – The manager stated that the lease template has finally been legally reviewed and now it is ready to proceed forward.
- EPCON – The manager gave an update. EPCON has finally made some progress on the project (Todd has met with Mark Cornett). Even with that said, he might need an extension to his development agreement.

REPORTS

The tax reports were presented for the City and County.

ADJOURNMENT (2:25). Next meeting is (Tuesday) Feb 17th at the Airport Terminal Building at 1pm.

Note: all minutes are available on the airport website

<https://www.gillespiecounty.gov/AgendaCenter/Airport-Advisory-Board-2>)

Attachment



1

An agenda slide for the AAB Meeting. The background is white with a large, faint watermark of the Gillespie County Airport logo. In the top left corner, there is a small version of the logo. The word "Agenda" is written in a large, black, sans-serif font. Below it is a numbered list of eight items:

1. Call to Order
2. Approval of Minutes
3. Airport Manager's Report
4. Open floor (EAA, Crosswind, TFS, Tac Aero, and guest)
5. New Business
6. Old Business
7. Comments-FBO, EDC, and Board Members
8. Adjourn

2



AAB

- Minutes Approval – vote needed
 - Nov 18
- Airport Manager’s Report
 - Event Update (*Italicized - Unconfirmed*)
 - Mar 17-22 – COPA Formation (Cirrus) (35a/c)
 - Mar 26-29 – KingAir Nation Flyin (50 a/c)
 - Apr 23-25 – T-6
 - Sept 22-26 – Cessna 120/140 Assn 2026 Convention (40 a/c)

3



AAB

- Airport Manager’s Report
 - Court Actions – No court actions
 - T-Hangar Occupancy – 100% (48)
 - Airport Status:

| | |
|--|--|
| | Lights (PAPIs, Beacon, Rwy Edge, Taxiway, Signs) |
| | Communication (CTAF, GCO, AWOS) |
| | Weather Station |
| | Facilities |
| | Miscellaneous (Construction, Closures, etc.) |

4



AAB

- Airport Development Update:
 - Active Private Projects:

| # | Developer | LOI Date Rcv'd | Status | Comments |
|---|--------------|----------------|--------|--|
| 1 | EPCON | 5/22/24 | PHII | DA Signed 04/03/2025 (renewed on 10/04/25)...expires April 1, 2026 |
| 2 | Gardner | 1/30/25 | PHIV | Lease signed (Sept 1 st) |
| 3 | Lonestar Av8 | 03/20/25 | PHIV | Lease signed (Sept 1 st) |

5



Hot Topics/Misc.

6



AAB

- Open Floor
 - FBO
 - Crosswind
 - Texas Forest Service
 - Estenson Group
 - Tac Aero Tailwheel Academy
 - Tango 82
 - MX Shop
 - Guest

7




New Business

8



Old Business

9



AAB

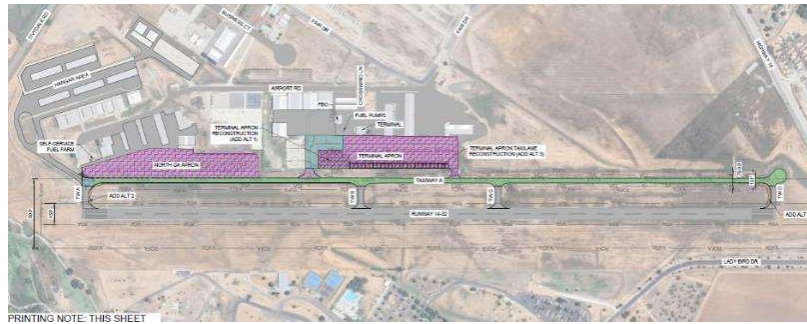
- Update to Minimum Standards
- CIP Projects Update

10



Pavement Project Comments

- TXDOT Comm approved the Project – awaiting RFQ / Advertising...Still...

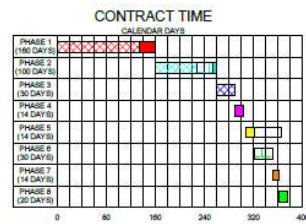


11



Project Timeline

- Final review Meeting (July 1st)
 - Final design
 - TXDOT review +NTP
 - TX Commission Approval (14 days)
 - RFP to contractor selection (21 days)
 - Contractor selection (14 days)
 - Preconstruction review (14 days)
 - Construction phase
- July 31st
 Aug 15th
 Oct 31st – **Nov 14th**
 Nov 14th – **Dec 5th**
 Dec 5th – **Dec 19th**
 Dec 19th – **Jan 2nd**
 Start Date Jan 2026



NOTES:
 1. PRIOR TO PERMANENT MARKING APPLICATION, CONTRACTOR SHALL ALLOW 30 DAYS FOR CURING OF ASPHALT PAVEMENT.
 2. SHOULD ADDITIVE ALTERNATE 1 OR 3 BE AWARDED, CONTRACTOR SHALL BE AWARDED AN ADDITIONAL 45 CALENDAR DAYS DURING PHASE 5 OF CONSTRUCTION. THIS SHALL PUSH THE TIMELINE OF THE REMAINING PHASES IN PROCEEDING ORDER.

12



Other CIP Projects

- Drainage study – survey work done
- Automated Weather Observing System Replacement
 - DONE...FYI, we are still having minor issues with the system
- Runway Evaluation
 - Change of plans – TXDOT is paying for it.
- Non CIP (ATP grant program) – Terminal Expansion – Application submitted (Jan 15th)

13



Old Business

- LPV- new date for publish...9/3/2026
- Joe Fritz' renewal – we have finalized the lease review (legal)
- EPCON – might need an extension

14




AAB

- Comments-EDC, and Board Members



15



Sales Tax Dec

SALES TAX COMPARISON SUMMARY - DECEMBER, 2025 (OCTOBER SALES)

| CITY | % change month | % change ytd | COUNTY | % change month | % change ytd |
|----------------|----------------|--------------|------------------|----------------|--------------|
| Fredericksburg | (0.14) | (0.39) | Gillespie | 3.24 | 0.57 |
| Kerrville | 5.62 | 4.70 | Kerr | 8.50 | 4.87 |
| Boerne | 6.82 | 2.85 | Kendall | 4.66 | 4.21 |
| Llano | (3.85) | 4.29 | Llano | (1.22) | 6.61 |
| Marble Falls | (1.64) | (4.42) | Burnet | (0.67) | (0.85) |
| Bandera | 8.30 | 5.24 | Bandera | 3.22 | 13.07 |
| Johnson City | (16.66) | 0.82 | Blanco | (1.65) | (1.14) |
| New Braunfels | 1.28 | 2.24 | Comal | 19.63 | 16.90 |
| Wimberley | (4.07) | 7.02 | Hays | 5.20 | 5.96 |
| Salado | (0.10) | 14.40 | Bell | (4.05) | 0.49 |
| Granbury | 3.75 | 5.11 | Hood | (16.70) | 4.22 |
| Waco | 13.15 | 8.12 | McLennan | 7.08 | 7.41 |
| Grapevine | 9.63 | 4.36 | Tarrant | 7.77 | 3.81 |
| Port Aransas | 9.01 | 12.40 | Nueces | 2.46 | 2.32 |
| Rockport | 5.32 | 4.87 | Arlansas | 58.53 | 11.59 |
| Marfa | 17.23 | 6.70 | Presidio | 12.63 | 8.51 |
| Galveston | 0.42 | 7.32 | Galveston | 5.35 | 3.21 |
| Brenham | 1.37 | 5.21 | Washington | 9.64 | 6.58 |
| Austin | 6.43 | 0.38 | Travis | 7.17 | 1.45 |
| San Antonio | 0.33 | 1.58 | Bexar | (0.11) | 1.50 |
| Houston | 5.97 | 3.86 | Harris | 5.27 | 4.39 |
| Dallas | (0.29) | 2.67 | Dallas | 6.24 | 4.36 |
| State (Cities) | 7.01 | 4.50 | State (Counties) | 5.81 | 5.64 |

Shaded numbers are worse than curs.

OCTOBER SALES RECEIPTS
December Sales Tax Report

City of Fredericksburg


| | 2025 | 2024 | 2023 | 2022 | 2021 |
|--------------|------------------|------------------|------------------|------------------|------------------|
| JAN | 765,994 | 799,260 | 782,605 | 761,015 | 592,454 |
| FEB | 1,026,868 | 924,657 | 994,706 | 871,461 | 744,208 |
| MAR | 660,755 | 657,791 | 633,261 | 611,429 | 508,167 |
| APR | 660,796 | 699,382 | 636,485 | 533,476 | 438,755 |
| MAY | 857,624 | 900,460 | 822,646 | 853,994 | 757,207 |
| JUN | 775,964 | 780,056 | 715,407 | 671,353 | 668,869 |
| JUL | 730,351 | 733,786 | 738,475 | 691,245 | 661,060 |
| AUG | 808,908 | 798,115 | 703,432 | 786,554 | 799,227 |
| SEP | 753,360 | 757,497 | 730,795 | 686,961 | 661,403 |
| OCT | 683,786 | 702,427 | 675,110 | 692,563 | 623,790 |
| NOV | 744,277 | 782,296 | 735,976 | 731,885 | 771,224 |
| DEC | 814,928 | 816,124 | 744,887 | 751,235 | 649,485 |
| Total | 9,282,741 | 9,319,851 | 8,914,085 | 8,606,171 | 7,871,869 |

| | Dec 25 | Dec 24 | Change | YTD 2025 | YTD 2024 | Change |
|------------------|------------------|------------------|--------------|-------------------|-------------------|---------------|
| Fredericksburg | 814,928 | 816,124 | -0.14% | 9,282,741 | 9,319,851 | -0.39% |
| Gillespie County | 426,459 | 413,035 | 3.24% | 4,622,969 | 4,586,526 | 0.57% |
| Combined | 1,241,387 | 1,229,159 | 0.99% | 13,905,710 | 13,916,377 | -0.08% |

Gillespie County

| | 2025 | 2024 | 2023 | 2022 | 2021 |
|--------------|------------------|------------------|------------------|------------------|------------------|
| JAN | 388,091 | 415,372 | 406,560 | 371,424 | 285,819 |
| FEB | 483,853 | 426,591 | 453,797 | 415,141 | 350,057 |
| MAR | 346,308 | 345,135 | 351,297 | 306,429 | 255,886 |
| APR | 361,483 | 362,273 | 346,599 | 281,134 | 225,110 |
| MAY | 399,524 | 433,012 | 404,469 | 401,106 | 345,729 |
| JUN | 404,319 | 399,611 | 341,416 | 354,750 | 334,243 |
| JUL | 371,735 | 373,955 | 390,850 | 364,652 | 338,529 |
| AUG | 381,619 | 362,714 | 359,245 | 351,111 | 364,353 |
| SEP | 356,791 | 356,504 | 455,706 | 312,932 | 308,778 |
| OCT | 336,027 | 330,808 | 328,640 | 321,054 | 282,563 |
| NOV | 366,760 | 377,516 | 372,394 | 366,574 | 371,347 |
| DEC | 426,459 | 413,035 | 375,629 | 361,348 | 326,905 |
| Total | 4,622,969 | 4,596,526 | 4,586,602 | 4,221,655 | 3,789,118 |

16



Sales Tax Jan

NOVEMBER SALES RECEIPTS

January Sales Tax Report

City of Fredericksburg

| | 2026 | 2025 | 2024 | 2023 | 2022 |
|--------------|----------------|------------------|------------------|------------------|------------------|
| JAN | 771,444 | 765,994 | 799,260 | 782,905 | 760,015 |
| FEB | | 1,026,898 | 924,657 | 994,706 | 871,461 |
| MAR | | 660,755 | 657,791 | 633,261 | 611,429 |
| APR | | 660,796 | 699,382 | 636,485 | 533,476 |
| MAY | | 857,624 | 900,460 | 822,646 | 853,894 |
| JUN | | 775,064 | 780,056 | 715,407 | 675,353 |
| JUL | | 730,381 | 733,788 | 738,475 | 699,245 |
| AUG | | 808,908 | 765,115 | 703,432 | 750,554 |
| SEP | | 753,360 | 757,497 | 732,795 | 686,991 |
| OCT | | 683,786 | 702,427 | 675,110 | 692,563 |
| NOV | | 744,277 | 782,266 | 735,976 | 731,885 |
| DEC | | 814,928 | 816,124 | 744,687 | 751,235 |
| Total | 771,444 | 9,282,741 | 9,319,851 | 8,914,085 | 8,608,171 |

| | Jan 26 | Jan 25 | Change | YTD 2026 | YTD 2025 | Change |
|------------------|------------------|------------------|--------------|------------------|------------------|--------------|
| Fredericksburg | 771,444 | 765,994 | 0.71% | 771,444 | 765,994 | 0.71% |
| Gillespie County | 386,658 | 388,091 | -0.29% | 386,658 | 388,091 | -0.29% |
| Combined | 1,158,102 | 1,154,085 | 0.37% | 1,158,102 | 1,154,085 | 0.37% |

Gillespie County

| | 2026 | 2025 | 2024 | 2023 | 2022 |
|--------------|----------------|------------------|------------------|------------------|------------------|
| JAN | 386,658 | 388,091 | 415,372 | 406,560 | 371,424 |
| FEB | | 483,853 | 426,591 | 453,797 | 419,141 |
| MAR | | 346,308 | 345,135 | 351,297 | 305,429 |
| APR | | 361,483 | 362,273 | 346,599 | 285,134 |
| MAY | | 399,524 | 433,012 | 404,469 | 401,106 |
| JUN | | 404,319 | 399,611 | 341,416 | 354,750 |
| JUL | | 371,735 | 373,955 | 360,650 | 364,652 |
| AUG | | 381,919 | 362,714 | 352,245 | 335,111 |
| SEP | | 356,791 | 356,504 | 455,706 | 312,932 |
| OCT | | 336,027 | 330,808 | 328,640 | 321,054 |
| NOV | | 366,760 | 377,516 | 372,394 | 369,574 |
| DEC | | 426,459 | 413,035 | 375,629 | 361,348 |
| Total | 386,658 | 4,622,969 | 4,596,626 | 4,586,602 | 4,221,655 |

SALES TAX COMPARISON SUMMARY - JANUARY, 2026 (NOVEMBER SALES)

| CITY | % change month | % change ytd | COUNTY | % change month | % change ytd |
|----------------|----------------|--------------|------------------|----------------|--------------|
| Fredericksburg | 0.71 | 0.71 | Gillespie | (0.29) | (0.29) |
| Kerrville | 3.74 | 3.74 | Kerr | 4.47 | 4.47 |
| Boerne | 9.34 | 9.34 | Kendall | 6.93 | 6.93 |
| Llano | (7.48) | (7.48) | Llano | (5.10) | (5.10) |
| Marble Falls | 0.24 | 0.24 | Burnet | 0.95 | 0.95 |
| Bandera | (2.07) | (2.07) | Bandera | 8.39 | 8.39 |
| Johnson City | (0.59) | (0.59) | Bianco | (2.55) | (2.55) |
| New Braunfels | 13.61 | 13.61 | Comal | 15.14 | 15.14 |
| Wimberley | 2.62 | 2.62 | Hays | 6.80 | 6.80 |
| Salado | (0.74) | (0.74) | Bell | 1.97 | 1.97 |
| Granbury | 2.94 | 2.94 | Hood | (10.21) | (10.21) |
| Waco | 10.98 | 10.98 | McLennan | 7.84 | 7.84 |
| Grapewine | 1.94 | 1.94 | Tarrant | 4.18 | 4.18 |
| Port Aransas | 23.34 | 23.34 | Nueces | 2.29 | 2.29 |
| Rockport | 3.34 | 3.34 | Aransas | 25.87 | 25.87 |
| Marfa | 21.19 | 21.19 | Presidio | (10.53) | (10.53) |
| Galveston | 4.38 | 4.38 | Galveston | 3.71 | 3.71 |
| Brenham | 4.73 | 4.73 | Washington | 9.49 | 9.49 |
| Austin | 5.64 | 5.64 | Travis | 4.98 | 4.98 |
| San Antonio | 3.60 | 3.60 | Bexar | 2.82 | 2.82 |
| Houston | (0.28) | (0.28) | Harris | 0.08 | 0.08 |
| Dallas | (4.15) | (4.15) | Dallas | 1.68 | 1.68 |
| State (Cities) | 4.32 | 4.32 | State (Counties) | 2.98 | 2.98 |

Shaded numbers are worse than curs.

17



18