

**AGENDA**  
**PARKS AND RECREATION COMMISSION**  
**DOWNTOWN ANAHEIM COMMUNITY CENTER**  
**250 E. CENTER ST., ANAHEIM, CA 92805**  
**March 25, 2026 – 6:00 p.m.**

**COMMISSIONERS**

CarlottaRhea Clark, Chair  
Greg Martin, Vice Chair  
Jim Cook  
Bill Couture  
Tony Flores  
Robert Ryan  
Fred Sigala, Jr.

**STAFF**

Sjany Larson-Cash, Director  
Anaheim Sporn, Deputy Director  
JJ Jimenez, Parks Manager  
Ana Straabe, Principal Project Planner  
Kamila Rodriguez, Senior Secretary

**EX-OFFICIO MEMBERS**

Jose Paolo Magcalas, Anaheim Union High School District  
Luis Flores, Centralia School District  
Andrea Yamasaki, Orange Unified School District  
Paul Juarez, Placentia Yorba Linda Unified School District  
Christina Karanick, Savanna Elementary School District  
Juan Gabriel Alvarez, Anaheim Elementary School District  
Patricia Soave, Magnolia School District

**PUBLIC PARTICIPATION / SPECIAL NOTE TO OUR GUESTS AND VISITORS**

If you desire to address the Commission, you will have 3 minutes when called upon under Agenda Item #3, Unscheduled Public Communication. In addition, members of the public can submit comments electronically for the Parks and Recreation Commission's consideration by sending them to [krdriguez1@anaheim.net](mailto:krdriguez1@anaheim.net). **To ensure distribution to the Parks and Recreation Commission prior to consideration of the agenda, please submit comments prior to 12:00 p.m., the day of the meeting.** Those comments, as well as any comments received after 12:00 p.m., will be distributed to the Parks and Recreation Commissioners and will be made part of the official public record of the meeting. Contact [Kamila Rodriguez at krdriguez1@anaheim.net](mailto:Kamila.Rodriguez@krdriguez1@anaheim.net) with any questions.

1. CALL TO ORDER
2. PLEDGE OF ALLEGIANCE
3. UNSCHEDULED PUBLIC COMMUNICATION
4. SCHEDULED COMMUNICATION
  - a) Maxwell Dog Park Update
5. APPROVAL OF THE MINUTES
  - a) January 28, 2026
6. REPORTS
  - a) Park Ranger Report – January/February
  - b) Recreation, Human & Neighborhood Services Activity Report – December/January
  - c) Parks Activity Report – January/February
  - d) Parks Capital Project Progress Report
7. NEW BUSINESS
  - a) Approval of Master Plan for Meadow Park
8. INFORMATIONAL ITEMS
9. ADJOURNMENT – The next meeting will be held on **April 22, 2026 at 6:00 p.m. – East Anaheim Community Center**

All agenda items and backup materials are available for review at the Community Services Department and Anaheim.net. Any writings or documents provided to a majority of the Parks and Recreation Commission regarding any items on this agenda (other than writings legally exempt from public disclosure) will be made available for public inspection in the Community Services Offices, 200 S. Anaheim Blvd., 4<sup>th</sup> Floor, Anaheim, CA 92805, during regular business hours.

If requested, the agenda and backup materials will be made available in appropriate alternative formats to persons with a disability, as required by Sec. 202 of the Americans with Disabilities Act of 1990 (42 U.S.C. Sec. 12132) and the federal rules and regulations adopted in implementation thereof.

Any person who requires a disability-related modification or accommodation, including auxiliary aids or services, in order to observe and/or offer public comment may request such reasonable modification, accommodation, aid, or service by contacting the Community Services Department at 200 S. Anaheim Blvd., 4<sup>th</sup> Floor, Anaheim CA or by telephone at (714) 765-5155, no later than 10:00 AM on the day preceding the scheduled meeting.

**Commission Members: Please notify Kamila Rodriguez with your attendance status no later than Tuesday, March 24th at 12:00 p.m. at [krdriguez1@anaheim.net](mailto:krdriguez1@anaheim.net) or (714) 765-5155.**

## MINUTES

**PARKS AND RECREATION COMMISSION  
DOWNTOWN ANAHEIM COMMUNITY CENTER  
250 E. CENTER ST., ANAHEIM, CA 92805  
January 28, 2026 – 6:00 p.m.**

### COMMISSIONERS PRESENT:

CarlottaRhea Clark, Chair  
Greg Martin, Vice Chair  
Jim Cook  
Bill Couture  
Robert Ryan  
Fred Sigala, Jr.

### STAFF PRESENT:

Anaheim Sporn, Deputy Director  
JJ Jimenez, Parks Manager  
Ana Straabe, Principal Project Planner  
Kamila Rodriguez, Senior Secretary

### STAFF ABSENT:

Sjany Larson-Cash, Director

### COMMISSIONERS ABSENT:

Tony Flores

## **A G E N D A**

## **A C T I O N   T A K E N**

---

1. **CALL TO ORDER:** Chair Clark called the meeting to order at 6:00 p.m.
2. **PLEDGE OF ALLEGIANCE:** Chair Clark led the Pledge of Allegiance.
3. **UNSCHEDULED PUBLIC COMMUNICATION:** Residents Scott and Denise Barnes addressed the commission regarding requested maintenance at Maxwell Dog Park.
4. **SCHEDULED COMMUNICATION:** None.
5. **APPROVAL OF THE MINUTES:** Chair Clark presented the December 3, 2025 Minutes for changes or corrections. Commissioner Ryan made a motion to accept the Minutes, seconded by Commissioner Cook. The motion was approved with 6 votes in favor. Chair Clark accepted the Minutes.
6. **REPORTS:**
  - a) **Park Ranger Report – November/December:** Anaheim Sporn presented the report and noted an increase in patrols from 2024 to 2025 for both months reviewed. A decrease in patron attendance from October to November was attributed to the time change and colder weather. Public assists remained consistent between both years. In December, Rangers conducted additional patrols and issued more curfew advisements than in November, which was correlated with newly hired Rangers completing their training period. Rangers also reported an increase in off-leash dog incidents in east Anaheim parks and are prioritizing enforcement efforts in those areas. Rangers continue to support overnight patrols in coordination with Police and Fire and provide resources to unhoused patrons.

Questions were answered regarding curfew advisements related to pickleball players, reported coyote sightings, and Ranger training protocols for coyote encounters. Commissioner Sigala shared constituent reports of increased bike theft at Schweitzer Park.

- a) **Recreation, Human & Neighborhood Services Activity Report – October/November 2025:** Anaheim Sporn presented the report and highlighted the 101st Fall Festival and Halloween Parade, which continues to see increasing participation from both City staff and residents each year. She noted that this year marked the first time the Fall Festival was held at Center Greens. Anaheim also highlighted another milestone: the Center Gallery's first Employee Art Exhibit. In addition, she recognized the second annual Acorn Festival at Oak

Canyon Nature Center, which celebrated Indigenous culture and traditions. Lastly, she noted the annual Dia de Los Muertos event at Center Greens.

Chair Clark and Commissioner Couture thanked staff for their efforts in executing the Fall Festival and commented on the success of hosting the event at Center Greens.

- b) Parks Activity Report – November/December: JJ Jimenez presented the report, highlighting ongoing efforts to maintain playground areas through woodchip installation and play equipment repairs. He also provided an update on athletic field renovations underway in preparation for the upcoming baseball season. Additionally, he noted the continued replacement of Park Rules signage with the updated design introduced in 2025 to reflect recent additions to the Municipal Code related to park ordinances. Within the Peralta sector, he highlighted the repair of a fence at Imperial Park in response to resident concerns. He also recognized the TreePower program's participation in recent events, where staff engaged youth participants and educated them on the benefits of trees. Lastly, he acknowledged the Facility Scheduling team's recent efforts to review permits and allocate baseball fields for the season.

Commissioner Ryan complimented the recent field renovation work. Questions were answered regarding the renovation of fields near Modjeska Park.

- c) Parks Capital Project Progress Report: Ana Straabe presented the report, beginning with an update on the Energy Field Improvements project and noting that community meetings would be taking place sometime in the month of February to share information with residents and collect feedback on possible amenities to be added to the site. She then introduced the La Palma Water Treatment Facility Renovation Project, which will transform a vacant area outside the Anaheim Public Utilities site into an educational space where students can participate in field trips focused on sustainable landscaping and water conservation. Ana also provided an update on the OC River Walk Project, noting that the agreement with the OC Water District has been executed and that a \$7 million grant from the Southern California Association of Governments has been awarded to support the bridge component of the project. Lastly, she reported that the Rio Vista Park Improvements are anticipated to be completed before the end of February.

Questions were answered regarding tribal monitoring services for the Brookhurst Splash Pad project, public access to the La Palma Water Treatment Facility, and the construction bid timeline for the River Park project.

7. **INFORMATIONAL ITEMS**: Anaheim Sporn provided the Winter 2026 "Your Community" publication to the Commission.

JJ Jimenez shared that the Center Greens mural installation is scheduled for the second week of February.

Commissioner Couture thanked staff for their quick response to electrical issues related to the Twila Reid Holiday Tree Lighting.

Vice Chair Martin thanked the Oak Canyon Nature Center for the positive experience with the Winter Camp program.

Commissioner Ryan requested to agendaize a follow up on the status of the requested maintenance at Maxwell Dog Park.

8. **ADJOURNMENT**: Chair Clark adjourned the meeting at 6:55 p.m.



City of Anaheim-Park Ranger Patrol Statistics Time Period: January 2026

| Area                                 | Patrols | Patrons | Public Contacts | Public Assists | Curfew | Alcohol | Possible Substance Abuse | Parking Notice | Vehicle | Dog Off Leash | Vendors | Syringe | Skate Boarding | Coyote | E-Bike | Other |
|--------------------------------------|---------|---------|-----------------|----------------|--------|---------|--------------------------|----------------|---------|---------------|---------|---------|----------------|--------|--------|-------|
| OLIVE HILLS DOG PARK / TENNIS COURTS | 113     | 354     | 52              | 0              | 1      | 0       | 0                        | 0              | 0       | 0             | 0       | 0       | 0              | 0      | 0      | 0     |
| PALM LANE PARK                       | 37      | 161     | 30              | 0              | 0      | 0       | 0                        | 0              | 0       | 1             | 0       | 0       | 0              | 0      | 0      | 0     |
| PALM LANE SKATE PARK                 | 44      | 51      | 8               | 0              | 4      | 0       | 0                        | 0              | 0       | 1             | 0       | 0       | 44             | 0      | 0      | 0     |
| PAUL REVERE PARK                     | 9       | 21      | 1               | 0              | 0      | 0       | 0                        | 0              | 0       | 0             | 0       | 0       | 0              | 0      | 0      | 0     |
| PEARSON PARK                         | 177     | 3537    | 236             | 2              | 16     | 4       | 0                        | 0              | 0       | 2             | 0       | 0       | 0              | 0      | 0      | 10    |
| PELANCONI PARK                       | 31      | 69      | 15              | 0              | 15     | 0       | 0                        | 0              | 0       | 0             | 0       | 0       | 0              | 0      | 0      | 0     |
| PERALTA PARK                         | 131     | 1703    | 124             | 0              | 1      | 0       | 0                        | 1              | 2       | 3             | 0       | 0       | 0              | 0      | 1      | 1     |
| PETER MARSHALL PARK                  | 45      | 213     | 116             | 0              | 0      | 0       | 0                        | 0              | 0       | 0             | 0       | 0       | 0              | 0      | 0      | 0     |
| PIONEER PARK                         | 150     | 1526    | 115             | 0              | 5      | 0       | 2                        | 0              | 0       | 8             | 0       | 0       | 0              | 0      | 0      | 2     |
| PONDEROSA PARK                       | 131     | 1585    | 147             | 0              | 16     | 0       | 0                        | 0              | 0       | 2             | 5       | 0       | 386            | 0      | 0      | 3     |
| RIO VISTA PARK                       | 161     | 702     | 83              | 0              | 2      | 0       | 6                        | 0              | 0       | 7             | 1       | 0       | 0              | 0      | 0      | 3     |
| RIVERDALE PARK                       | 125     | 685     | 119             | 0              | 8      | 0       | 0                        | 0              | 0       | 9             | 0       | 0       | 0              | 0      | 0      | 0     |
| RONALD REAGAN PARK                   | 138     | 1970    | 118             | 0              | 20     | 0       | 0                        | 0              | 0       | 8             | 0       | 0       | 0              | 0      | 4      | 0     |
| SAGE PARK                            | 137     | 797     | 108             | 0              | 1      | 10      | 0                        | 0              | 1       | 3             | 0       | 0       | 0              | 0      | 0      | 3     |
| SCHWEITZER PARK                      | 138     | 1311    | 199             | 5              | 46     | 6       | 0                        | 0              | 0       | 5             | 3       | 0       | 33             | 0      | 0      | 18    |
| SOUTH JUNIOR HIGH SCHOOL             | 8       | 7       | 2               | 0              | 0      | 0       | 0                        | 0              | 0       | 0             | 0       | 0       | 0              | 0      | 0      | 0     |
| STODDARD PARK                        | 124     | 1144    | 80              | 0              | 7      | 2       | 0                        | 0              | 0       | 4             | 0       | 0       | 0              | 0      | 1      | 5     |
| SYCAMORE FIELD                       | 20      | 117     | 11              | 0              | 0      | 0       | 0                        | 0              | 0       | 0             | 1       | 0       | 0              | 0      | 0      | 1     |
| SYCAMORE PARK                        | 88      | 412     | 54              | 0              | 0      | 0       | 0                        | 0              | 0       | 5             | 0       | 0       | 0              | 1      | 2      | 0     |
| TRIDENT ATHLETIC FIELD               | 12      | 30      | 5               | 0              | 0      | 0       | 0                        | 0              | 0       | 0             | 0       | 0       | 0              | 0      | 0      | 0     |
| TWILA REID PARK                      | 155     | 3733    | 474             | 1              | 83     | 10      | 1                        | 0              | 0       | 8             | 0       | 0       | 0              | 0      | 3      | 14    |
| WALNUT GROVE PARK                    | 148     | 748     | 140             | 2              | 8      | 3       | 3                        | 0              | 0       | 2             | 0       | 0       | 0              | 0      | 0      | 8     |
| WEST ANAHEIM SKATE PARK              | 28      | 4       | 0               | 0              | 3      | 0       | 0                        | 0              | 0       | 0             | 0       | 0       | 0              | 0      | 0      | 0     |
| WEST ANAHEIM YOUTH CENTER            | 69      | 192     | 122             | 0              | 0      | 0       | 0                        | 0              | 0       | 0             | 0       | 0       | 0              | 0      | 0      | 0     |
| WETLANDS                             | 10      | 0       | 1               | 0              | 0      | 0       | 0                        | 0              | 0       | 0             | 0       | 0       | 0              | 0      | 0      | 0     |
| WILLOW PARK                          | 142     | 757     | 33              | 0              | 2      | 0       | 0                        | 0              | 1       | 4             | 0       | 0       | 0              | 0      | 0      | 3     |
| YORBA PARK                           | 120     | 1555    | 122             | 0              | 15     | 1       | 0                        | 2              | 0       | 2             | 2       | 0       | 0              | 0      | 2      | 2     |

|                            |      |       |       |     |     |     |    |    |    |     |    |    |      |    |    |     |
|----------------------------|------|-------|-------|-----|-----|-----|----|----|----|-----|----|----|------|----|----|-----|
| <b>Total January 2026</b>  | 6053 | 51728 | 6550  | 25  | 794 | 142 | 30 | 11 | 7  | 154 | 27 | 1  | 1718 | 6  | 45 | 168 |
| <b>Total December 2025</b> | 5443 | 42307 | 4802  | 12  | 771 | 126 | 62 | 7  | 8  | 134 | 15 | 0  | 1404 | 16 | 35 | 166 |
| <b>Total January 2025</b>  | 4690 | 38740 | 18177 | 183 | 390 | 74  | 41 | 3  | 19 | 97  | 12 | 16 | 1764 | 4  | 0  | 0   |

|  |     |      |      |    |    |    |     |   |    |    |    |   |     |     |    |   |
|--|-----|------|------|----|----|----|-----|---|----|----|----|---|-----|-----|----|---|
| <b>Difference December 2025 &amp; January 2026</b> | 610 | 9421 | 1748 | 13 | 23 | 16 | -32 | 4 | -1 | 20 | 12 | 1 | 314 | -10 | 10 | 0 |
|--|-----|------|------|----|----|----|-----|---|----|----|----|---|-----|-----|----|---|

|   |      |       |        |      |     |    |     |   |     |    |    |     |     |   |    |   |
|---|------|-------|--------|------|-----|----|-----|---|-----|----|----|-----|-----|---|----|---|
| <b>Difference January 2025 &amp; January 2026</b> | 1363 | 12988 | -11627 | -158 | 404 | 68 | -11 | 8 | -12 | 57 | 15 | -15 | -46 | 2 | 45 | 0 |
|---|------|-------|--------|------|-----|----|-----|---|-----|----|----|-----|-----|---|----|---|



City of Anaheim-Park Ranger Patrol Statistics Time Period: February 2026

| Area                      | Patrols | Patrons | Public Contacts | Public Assists | Curfew | Alcohol | Possible Substance Abuse | Parking Notice | Vehicle | Dog Off Leash | Vendors | Syringe/Other | Skate Boarding | Coyote | E-Bike | Other | Exercising |
|---------------------------|---------|---------|-----------------|----------------|--------|---------|--------------------------|----------------|---------|---------------|---------|---------------|----------------|--------|--------|-------|------------|
| PEARSON PARK              | 166     | 3689    | 757             | 2              | 2      | 4       |                          |                |         | 2             |         |               |                |        | 5      | 7     | 364        |
| PELANCONI PARK            | 30      | 120     | 26              |                | 9      |         |                          |                |         |               |         |               |                |        |        | 2     | 56         |
| PERALTA PARK              | 131     | 2654    | 143             |                | 1      |         |                          | 1              | 2       | 4             | 1       |               |                |        |        |       | 157        |
| PETER MARSHALL PARK       | 40      | 199     | 104             |                |        |         |                          |                |         |               |         |               |                |        |        |       | 4          |
| PIONEER PARK              | 134     | 1571    | 160             |                | 23     | 4       |                          |                | 1       | 10            |         |               |                |        |        | 7     | 145        |
| PONDEROSA PARK            | 104     | 1718    | 113             | 2              |        |         | 2                        |                | 2       |               | 2       |               | 306            |        |        | 2     | 128        |
| RIO VISTA PARK            | 128     | 566     | 137             | 1              | 2      | 1       |                          |                |         | 10            |         |               |                |        |        | 3     | 78         |
| RIVERDALE PARK            | 103     | 582     | 88              |                | 1      | 4       |                          |                | 1       | 4             |         |               |                |        |        |       | 58         |
| RONALD REAGAN PARK        | 129     | 1176    | 183             | 2              | 44     |         |                          |                |         | 6             |         |               |                |        |        | 1     | 181        |
| ROOSEVELT PARK            | 3       | 9       | 1               |                |        |         |                          |                |         |               |         |               |                |        |        |       |            |
| SAGE PARK                 | 113     | 714     | 119             |                | 3      | 3       |                          |                |         | 2             |         |               |                |        | 2      | 6     | 62         |
| SCHWEITZER PARK           | 118     | 1330    | 244             | 4              | 57     | 7       | 2                        |                |         | 2             | 1       |               | 3              |        |        | 11    | 29         |
| SOUTH JUNIOR HIGH SCHOOL  | 1       | 6       | 3               |                |        |         |                          |                |         |               |         |               |                |        |        |       | 6          |
| STODDARD PARK             | 138     | 1540    | 102             | 1              | 20     | 1       |                          |                |         | 2             | 1       |               |                |        |        | 5     | 220        |
| SYCAMORE FIELD            | 15      | 26      |                 |                |        |         |                          |                |         |               |         |               |                |        |        |       | 6          |
| SYCAMORE PARK             | 83      | 296     | 96              | 1              |        |         |                          |                |         | 7             |         |               |                |        |        |       | 56         |
| TRIDENT ATHLETIC FIELD    | 6       |         |                 |                |        |         |                          |                |         |               |         |               |                |        |        |       |            |
| TWILA REID PARK           | 133     | 3325    | 670             |                | 35     | 1       | 2                        |                |         | 5             |         | 1             |                |        | 5      | 13    | 251        |
| WALNUT GROVE PARK         | 149     | 760     | 99              |                | 13     | 5       | 2                        |                |         | 6             |         |               |                |        |        | 9     | 43         |
| WEST ANAHEIM SKATE PARK   | 22      | 16      | 5               |                |        |         |                          |                |         |               |         |               | 10             |        |        | 1     | 6          |
| WEST ANAHEIM YOUTH CENTER | 67      | 113     | 97              |                |        |         |                          |                |         |               |         |               |                |        |        |       | 3          |
| WETLANDS                  | 38      | 4       |                 |                |        |         |                          |                |         |               |         |               |                |        |        |       | 4          |
| WILLOW PARK               | 107     | 668     | 56              | 1              | 1      | 3       |                          |                | 2       | 3             |         |               |                |        |        | 3     | 93         |
| YORBA PARK                | 72      | 1194    | 133             | 2              | 8      |         |                          | 1              |         | 1             |         |               |                | 1      |        | 1     | 369        |

|                            |      |       |       |    |     |     |    |    |    |     |    |   |      |    |    |     |      |
|----------------------------|------|-------|-------|----|-----|-----|----|----|----|-----|----|---|------|----|----|-----|------|
| <b>Total February 2026</b> | 5218 | 49406 | 7194  | 28 | 663 | 137 | 48 | 16 | 12 | 134 | 14 | 4 | 1482 | 11 | 73 | 152 | 5879 |
| <b>Total January 2026</b>  | 6053 | 51728 | 6550  | 25 | 794 | 142 | 30 | 11 | 7  | 154 | 27 | 1 | 1718 | 6  | 45 | 168 | 0    |
| <b>Total February 2025</b> | 4216 | 36732 | 15470 | 26 | 204 | 101 | 20 | 9  | 19 | 50  | 22 | 1 | 1233 | 1  | 0  | 0   | 0    |

|   |      |       |       |   |      |    |    |   |    |     |     |   |      |    |    |     |      |
|---|------|-------|-------|---|------|----|----|---|----|-----|-----|---|------|----|----|-----|------|
| <b>Difference January 2026 &amp; February 2026</b>  | -835 | -2322 | 644   | 3 | -131 | -5 | 18 | 5 | 5  | -20 | -13 | 3 | -236 | 5  | 28 | -16 | 5879 |
| <b>Difference February 2025 &amp; February 2026</b> | 1002 | 12674 | -8276 | 2 | 459  | 36 | 28 | 7 | -7 | 84  | -8  | 3 | 249  | 10 | 73 | 152 | 5879 |

**RECREATION AND HUMAN & NEIGHBORHOOD SERVICES DIVISIONS  
ACTIVITY REPORT  
DECEMBER 2025 – JANUARY 2026**

---

**RECREATION SERVICES**

---

**NUTCRACKER HOLIDAY CRAFT VILLAGE & TREE LIGHTING**

Community Services staff, in partnership with the Nutcracker Committee and the Downtown Anaheim Association, hosted the 31st Annual Christmas Tree Lighting Celebration and Holiday Village in Downtown Anaheim on Sunday, December 7. City Hall and Center Street Promenade transformed into a festive Winter Wonderland, welcoming more than 5,000 attendees. Highlights included a 30-foot decorated Christmas tree, a showcase of the Tuba Christmas performing group, free holiday crafts, train rides, photos with Santa, a snow play area, and performances by local community groups. The celebration also featured a portion of the Nutcracker by the Anaheim Ballet, the Anaheim Union High School Combined Choirs, a reading of *'Twas the Night Before Christmas* by Santa, and a joyful medley of Christmas carols performed by Jordan Smith Reynolds.



**YOUTH PROGRAMS**



Winter CampVenture was held from December 22<sup>nd</sup>, 2025 through January 9<sup>th</sup>, 2026 at the Downtown Anaheim Community Center and Peralta Park. The three-week program featured themed weeks and offered hands-on crafts such as snowstorms in a jar, DIY snow globe ornaments, and mini New Year's ball drops. Campers also enjoyed a variety of games, including snowball races, football frenzy, and hula hoop twister. Weekly excursions included trips to the Anaheim Ice Rinks, where Youth Engagement Anaheim Police Department officers joined in the fun, as well as visits to the Columbia Memorial Space Center and FunParx's American Ninja Warrior course. Overall, Winter CampVenture provided a fun, active, and engaging experience for all participants.

This winter, S.T.A.R.S. and Fun on Wheels enjoyed a variety of creative crafts including flower boxes, DIY puzzles, rain sticks, DIY rubber duckies, and many more hands-on activities. During the holiday season, both S.T.A.R.S. and Fun on Wheels gifted branded tie-dyed shirts to all participants.

Fun on Wheels was also excited to offer incentive packages at 10 different schools throughout the Anaheim Elementary School District during their last week of winter break, reaching nearly 400 participants across the school sites. Each incentive included outdoor games, such as Dodgeball, Last Man Standing, and Sharks and Minnows, as well as giant lawn games, such as Tetris, Jenga, and Pop-A-Shot, which were a huge hit.



## **CENTER GALLERY**

In January, the Center Gallery hosted an exhibition featuring the work of a local Anaheim artist, Jourdan Mendoza. The exhibition, titled *To the Waters and the Winds*, opened on January 9<sup>th</sup> and will remain on display through February 20<sup>th</sup>. Jourdan's passion for nature, fairy tales, mystical creatures, and surrealism inspired a vibrant, decorative exhibition that embraced a magical, whimsical atmosphere. The artist's reception welcomed her friends, family, and the public to celebrate her talents and achievements. Hosting the exhibit at Center Gallery created an inviting space for guests of all ages to explore and reconnect with their creativity and imagination.



---

## **HUMAN & NEIGHBORHOOD SERVICES**

---

### **ADOPT-A-FAMILY PROGRAM**

In 2025, the City of Anaheim's Community Services Department proudly hosted the Adopt-a-Family program, continuing a tradition that began in 2010 in partnership with the Anaheim Community Foundation to support the City's most economically challenged families during the holiday season. This



year's effort resulted in the adoption of 110 families, including 267 children and 236 adults, 503 in total, providing meaningful support during a time of increased financial stress and personal challenges. Participation from City departments, including the City Clerk, City Manager's Office, Community Services, Economic Development, Finance, Fire & Rescue, Housing and Community Development, Planning & Building, Public Utilities, and Public Works, demonstrated a strong, citywide commitment to giving back through simple yet impactful gifts such as warm clothing, toys, and gift cards. City of Anaheim employees and residents helped bring holiday joy to children, older adults, and their families.

## **WINTER HOLIDAY CELEBRATIONS AT THE FAMILY RESOURCE CENTERS**

This winter season, the City of Anaheim's Family Resource Centers shared holiday cheer. Community connections were strengthened through festive celebrations at the Downtown Anaheim, Miraloma Park, and Ponderosa Park Family Resource Centers. With the generous support of Friends of Families, DEVOTE, and Caminando con Fe, these events reached more than 2,000 community members across the city. Downtown Anaheim Family Resource Center welcomed 305 attendees, while Miraloma Park hosted two meaningful celebrations: the Caminando con Fe Toy Distribution, serving 263 families, and a Winter Celebration, reaching 407 attendees. Ponderosa Park Family Resource Center celebrated the season with 588 attendees. Collectively, these events demonstrated the power of partnership in creating joyful, welcoming spaces and memorable winter moments for Anaheim families facing barriers such as low income, multi-family households, and basic-needs challenges.



## **OLDER ADULTS**



December and January brought holiday cheer to older adults across the city with festive luncheons, music, decor, and joyful gatherings. Ugly sweater celebrations, cookie exchanges, and shared traditions created lasting memories and a strong sense of connection among participants. The Anaheim Senior Citizens' Club hosted a Winter Dance, bringing together attendees from multiple sites to celebrate the season together. Volunteer receptionists were also recognized for their dedication and kindness in helping make our centers warm and welcoming throughout the year.

Throughout the season, programs emphasized togetherness and well-being, offering opportunities for social engagement, laughter, and meaningful interaction. These celebrations not only marked the holidays but also reinforced a sense of belonging and community that continues into the new year.



**City of Anaheim - Parks Division**  
**ACTIVITY REPORT**  
**January and February 2026**

***Parks Division Mission Statement: To enrich the quality of life of individuals, families, and the community by providing excellent parks, trails, and recreational facilities through outstanding customer service, sustainable environmental practices and strong employee development and commitment.***

***The Parks Division, Maintenance and Operations Section is comprised of the Boysen Sector (South Central Anaheim), La Palma Sector (North Central Anaheim), Peralta Sector (East Anaheim), and Brookhurst Sector (West Anaheim), TreePower and Facility Scheduling. Work is performed throughout all sectors by a combination of Parks Division employees and contracted forces.***

**BROOKHURST SECTOR**

***Parks and areas of responsibility include: Barton, Brookhurst, Brookhurst Community Center, Brookhurst Skate Park, Chaparral, Circle, Energy, Hansen, John Marshall, Maxwell, Modjeska, Palm Lane, Peter Marshall, Ponderosa, Ross, Schweitzer, Stoddard, Twila Reid and Willow.***

**Top Highlights:**

- Staff patched and painted the pillars surrounding the Brookhurst Park play area.
- Staff partnered with Love Anaheim volunteers to conduct improvements at Circle Park including repainting play area fencing and planting.
- Staff conducted turf and infield renovations at Chaparral and Willow Park.



---

## **BOYSEN SECTOR**

*Parks and areas of responsibility include: Anaheim Coves, Boysen, Central Yard, Citrus, Colony, Cottonwood, Edison, Juarez, Lincoln, Little Peoples, Miraloma, Paul Revere, Pioneer, Rio Vista, Tree Yard and Walnut Grove.*

---

### **Top Highlights:**

- Staff renovated all outfields at Boysen, Edison, Juarez, Lincoln, Pioneer, and Rio Vista Park.
- The Bosen Park Baseball Field was reopened in February after extensive renovation.
- Staff rebuilt the backstop at the Lincoln Park field.
- Staff installed five tons of sand in the Pioneer Park play area.
- Staff conducted renovation of the Little People's Park field by aerifying, seeding, and topdressing.
- Staff painted ten picnic tables at Rio Vista Park.





---

## **PERALTA SECTOR**

*Parks and areas of responsibility include: Canyon Rim, Deer Canyon, Equestrian Trails, Eucalyptus, Fairmont Site, Imperial, Oak, Oak Canyon Nature Center, Olive Hills Tennis Courts, Olive Hills Dog Park, Pelanconi, Peralta, Pinney Recreation Center, Riverdale, Ronald Reagan, Roosevelt, Sycamore, Wetlands and Yorba.*

---

### **Top Highlights:**

- Staff repaired a damaged home plate at Yorba Park.
- Staff repainted the fire hydrant and poles at Deer Canyon Park.
- Staff installed woodchips at Imperial, Ronald Reagan, and Sycamore Park play areas.
- Staff repaired damage on the Canyon Rim ball field with sand infill.



---

## **TREEPOWER PROGRAM**

*Coordinates the placement of trees on private property throughout the City with the goal of reducing energy consumption through the cooling of structures of shade.*

---

### **Top Highlights:**

- TreePower staff conducted 8 appointments, sited 15 trees, and made or received 143 phone calls.
- TreePower staff met with residents at the 46<sup>th</sup> Annual Orange County Black History Parade and Unity Festival on February 7 and gave out California native wildflower seeds and coloring books to celebrate culture, unity, and shared history.
- TreePower staff attended four council district open house events in February to speak with residents about the spring promotion which entitles all residents to a bonus fruit tree, including apple, pomegranate, avocado, or plum.



---

## **FACILITY SCHEDULING**

*Coordinates the usage of athletic fields, picnic shelters, open space areas, and special events.*

---

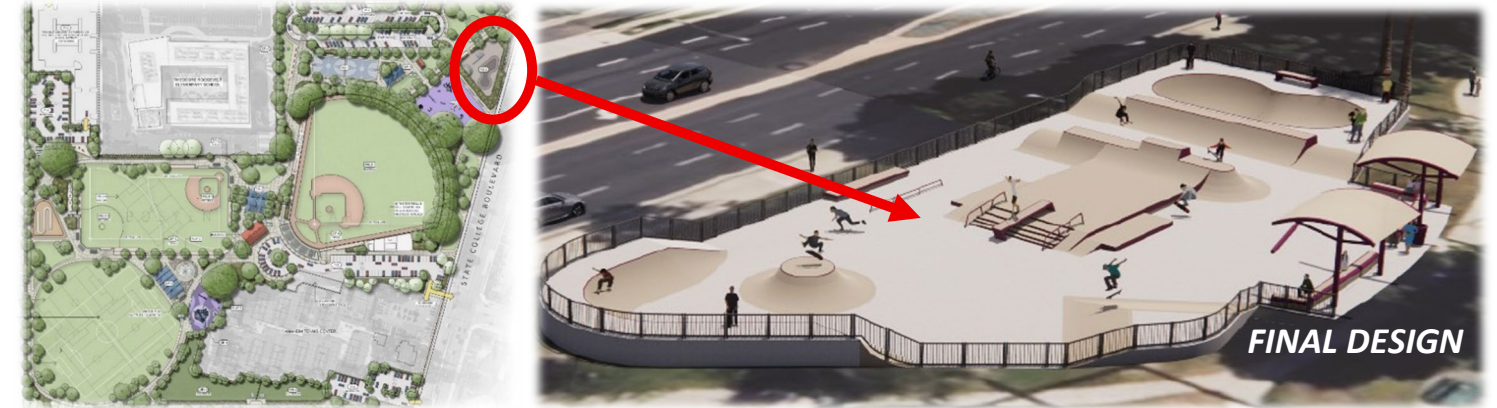
### **Top Highlights:**

- YMCA hosted the first special event of the year at Brookhurst Park on January 9. The Frost Festival provided youth programming including arts and crafts and snow play activities.
- On February 27, the baseball season kicked off with the Loara Tournament at Dee Fee Field.
- Premier Girls Fastpitch hosted a tournament from February 13 to February 15.



**COMMUNITY SERVICES CAPITAL PROJECTS PROGRESS REPORT - As of March 19, 2026**

|   | <b>PROJECT</b>  | <b>SCOPE</b>  | <b>FUNDING ACTIVITY</b>  | <b>RECENT ACCOMPLISHMENTS</b>  | <b>NEXT STEPS</b>   |
|---|---|---|--|--|---|
| 1 | <b>Boysen Park Refresh – Phase 1</b><br>951 S. State College Blvd.<br><br>PM: Ana | Construct an approx. 11,000 SF skate park with entry seating and shade. | <u>Grants:</u> <ul style="list-style-type: none"> <li>State Earmark \$15M</li> </ul> <u>Consultant:</u><br>Schmidt Design Group (SDG)<br>\$219,393 | <ul style="list-style-type: none"> <li>Obtained plan check approval from Building Division</li> <li>Obtained 3<sup>rd</sup> round plan check comments from Public Works and coordinated revisions with design consultant</li> <li>Design team incorporated plan check comments</li> <li>Resubmitted Public Works plans for 4<sup>th</sup> plan check review</li> </ul> | <ul style="list-style-type: none"> <li>Obtain permit approval from Public Works</li> <li>Begin bid advertisement</li> </ul> |



|   |   |  |   |  |   |
|---|---|--|---|--|---|
| 2 | <b>Boysen Park Refresh – Phase 2</b><br>951 S. State College Blvd.<br><br>PM: Naomi | Transform the northern 4.5-acres of Boysen Park, including an expanded parking lot, basketball courts, shaded picnic areas, renovated playground, new restroom, new landscaping, and other park amenities. | <u>Grants:</u> <ul style="list-style-type: none"> <li>State Earmark \$15M</li> <li>Federal Earmark \$1M (Correa)</li> <li>Land and Water Conservation Fund (LWCF) \$5,728,155 requested</li> </ul> <u>Consultant:</u><br>PBLA Engineering, Inc. \$698,766 | <ul style="list-style-type: none"> <li>PBLA submitted 3 design alternatives for review and discussion</li> <li>City provided comments and PBLA began working on a final design alternative</li> <li>PBLA continued to work with LSI (playground manufacturer) on developing 3 design options</li> <li>Began coordinating community meeting dates and ideas for playground design feedback</li> </ul> | <ul style="list-style-type: none"> <li>Develop final design from initial comments</li> <li>Obtain and review findings of existing utility locations</li> <li>Obtain playground design options and hold community meeting</li> <li>Begin restroom Demolition Plan</li> </ul> |
|---|---|--|---|--|---|



**COMMUNITY SERVICES CAPITAL PROJECTS PROGRESS REPORT - As of March 19, 2026**

|   | <b>PROJECT</b>  | <b>SCOPE</b>                             | <b>FUNDING ACTIVITY</b>   | <b>RECENT ACCOMPLISHMENTS</b>  | <b>NEXT STEPS</b>   |
|---|---|--|---|--|---|
| 3 | <b>Brookhurst Splash Pad</b><br>2271 W Crescent Ave.<br><br>PM: Ana | Install a splash pad at Brookhurst Park. | <u>Grants:</u><br>CDBG \$800,000<br><br><u>Consultant:</u><br>David Volz Design (DVD) \$201,642<br><br><u>Contractor:</u><br>Developers General Contracting, Inc. (DGC) \$1,376,988 | <ul style="list-style-type: none"> <li>• Additional submittals were reviewed and approved</li> <li>• Coordinated and held weekly pre-start progress meetings with contractor</li> <li>• Installed construction information signs, construction fence, trailer, etc.</li> <li>• Issued Notice to Proceed to the contractor (DGC)</li> <li>• DGC began construction on March 16</li> </ul> | <ul style="list-style-type: none"> <li>• Obtain and review additional material submittals</li> <li>• Conduct weekly construction meetings</li> <li>• Continue construction</li> </ul> |

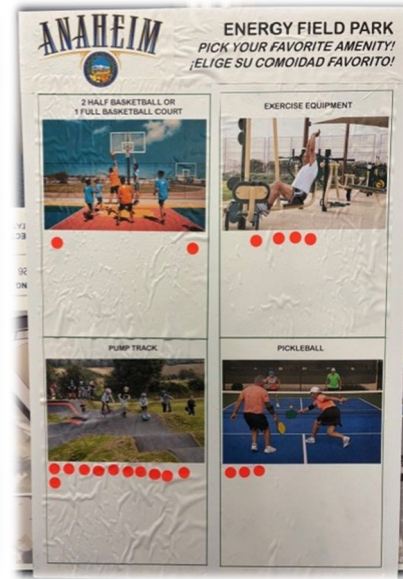


|   |   |  |  |  |                           |
|---|---|--|--|--|---------------------------|
| 4 | <b>Center Greens Mural</b><br>305 E. Broadway<br><br>PM: JJ | Install a mural on the east and north facing walls of the Downtown Anaheim Youth Center and on the east facing wall of the adjacent parking garage | <u>Muralist:</u> Zaoone (Damin Lujan, Artist) \$129,635<br><br><u>Contractor:</u> PMC \$14,560 | <ul style="list-style-type: none"> <li>• Artist completed all murals located on the east and north facing walls of the Youth Center and the parking structure</li> </ul> | n/a – Project is complete |
|---|---|--|--|--|---------------------------|

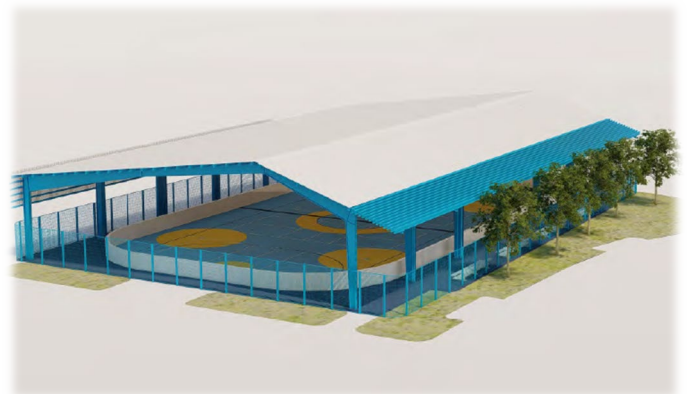


**COMMUNITY SERVICES CAPITAL PROJECTS PROGRESS REPORT - As of March 19, 2026**

|   | <b>PROJECT</b>  | <b>SCOPE</b>   | <b>FUNDING ACTIVITY</b>   | <b>RECENT ACCOMPLISHMENTS</b>  | <b>NEXT STEPS</b>  |
|---|---|--|---|--|--|
| 5 | <b>Energy Field Improvements</b><br>1625 S Ninth St.<br><br>PM: Naomi | Replace existing artificial turf with irrigation and grass and other related improvements. | <u>Grants:</u><br>Anaheim Public Utilities \$1M<br><br><u>Consultant:</u> TBD | <ul style="list-style-type: none"> <li>Coordinated with Project SAY program staff and presented four (4) amenity alternatives to the residents/teens at the Hermosa Village community center</li> <li>Drafted a Request for Proposals (RFP) for design services</li> </ul> | <ul style="list-style-type: none"> <li>Assess all community feedback</li> <li>Develop master plan and final cost estimate</li> <li>Finalize and distribute RFP to consultants for design services</li> </ul> |



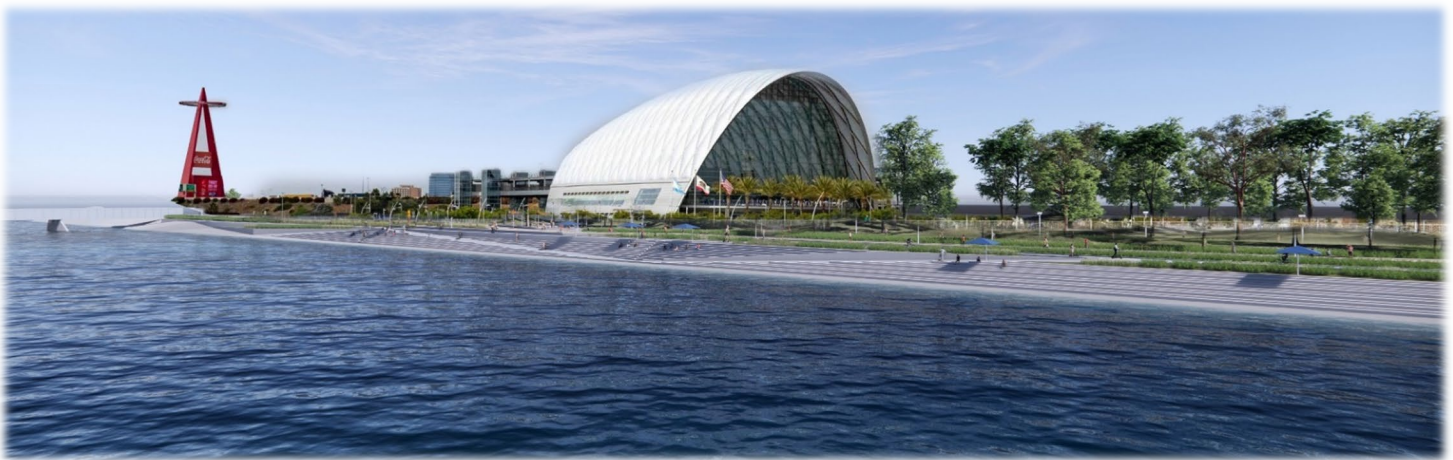
|   |  |  |  |   |  |
|---|--|--|--|---|--|
| 6 | <b>La Palma Park Improvements</b><br>1151 N La Palma Park Way<br><br>PM: Ana | Improve approx. 10.5-acres of the west side of La Palma Park with three (3) soccer fields, new lighting, playground, exercise equipment, open air arena, restroom building, landscaping & irrigation, and other supporting park amenities. | <u>Grants:</u> <ul style="list-style-type: none"> <li>Federal Earmark \$2M</li> <li>Outdoor Recreation Legacy Partnership (ORLP) \$6M</li> <li>Rivers and Mountains Conservancy (RMC) \$1.5M</li> </ul> <u>Consultant:</u> SWA Group \$1,390,875 | <ul style="list-style-type: none"> <li>SWA worked to further develop the design drawings</li> <li>Coordinated and held check-in meeting with the design team</li> <li>Updated and finalized the playground colors with manufacturer's designer</li> </ul> | <ul style="list-style-type: none"> <li>Obtain and review the 90% design drawings and cost estimate</li> <li>Identify and apply for additional funding for design and construction</li> </ul> |
|---|--|--|--|---|--|





**COMMUNITY SERVICES CAPITAL PROJECTS PROGRESS REPORT - As of March 19, 2026**

|   | <b>PROJECT</b>  | <b>SCOPE</b>   | <b>FUNDING ACTIVITY</b>  | <b>RECENT ACCOMPLISHMENTS</b>  | <b>NEXT STEPS</b>   |
|---|---|--|--|--|---|
| 9 | <p><b>OC River Walk</b><br/>Connect Anaheim Coves to Orangewood Avenue, approximately 2-miles</p> <p>PM: JJ &amp; Ana</p> | <p>Transform 2-miles of the Santa Ana River Corridor between Orangewood and Anaheim Coves into an iconic destination for recreation and entertainment. While continuing to serve as flood control infrastructure, the project will recharge the aquifer, improve connectivity, recreation, aesthetics, and ecology of the river.</p> <p><a href="http://Ocriverwalk.com">Ocriverwalk.com</a></p> | <p><u>Grants:</u></p> <ul style="list-style-type: none"> <li>• State Coastal Conservancy (SCC) - \$5M + \$1.2M</li> <li>• Federal RAISE grant - \$1.9M</li> <li>• Federal Earmark (bridge) \$1,666,279</li> <li>• Federal OCTA SCAG - \$7M</li> <li>• Federal Earmark \$1.2M</li> </ul> <p><u>Consultant:</u><br/>PACE \$7,930,627</p> | <ul style="list-style-type: none"> <li>• Continued to coordinate with environmental consultant and Caltrans on National Environmental Policy Act (NEPA) document submittal</li> <li>• Coordinated and held multiple project check-in meetings with design consultant</li> <li>• Coordinated with Caltrans and Federal Highway Administration on scope change request to the RAISE grant</li> </ul> | <ul style="list-style-type: none"> <li>• Continue to work with consultants and project partners</li> <li>• Finalize various grant Agreements</li> <li>• Continue to work with Caltrans on NEPA documents</li> </ul> |



|    |  |  |  |   |  |
|----|--|--|--|---|--|
| 10 | <p><b>OCVIBE – Meadow Park</b></p> <p>PM: JJ &amp; Ana</p> | <p>Transform an existing parking lot adjacent to ARTIC into an approx. 5-acre public park.</p> | <p><u>Grants:</u> n/a</p> <p><u>Consultant:</u><br/>Fletcher</p> | <ul style="list-style-type: none"> <li>• Coordinated draft Park design review with Planning staff, OCVIBE and their design consultants</li> </ul> | <ul style="list-style-type: none"> <li>• Continue to work with OCVIBE and consultants</li> <li>• Continue to coordinate with OCVIBE / OC River Walk interface</li> </ul> |
|----|--|--|--|---|--|



**COMMUNITY SERVICES CAPITAL PROJECTS PROGRESS REPORT - As of March 19, 2026**

|    | <b>PROJECT</b>  | <b>SCOPE</b>  | <b>FUNDING ACTIVITY</b>   | <b>RECENT ACCOMPLISHMENTS</b>  | <b>NEXT STEPS</b>         |
|----|---|---|---|--|---------------------------|
| 11 | <b>Olive Hills Pickleball Courts</b><br>700 S Nohl Canyon Road<br><br>PM: Ana | Install two (2) permanent pickleball courts in the practice court space on level 1 courts | <u>Grants:</u><br>n/a<br><br><u>Consultant:</u><br>n/a<br><br><u>Contractor:</u><br>Carmody Construction<br>\$46,141.63 | <ul style="list-style-type: none"> <li>• Contractor completed surfacing repair and painting and installed pickleball nets</li> <li>• City staff inspected and approved final work product</li> <li>• Pickleball courts were opened to the public in late February</li> </ul> | n/a – Project is complete |



|    |   |   |   |  |  |
|----|---|---|---|--|--|
| 12 | <b>Rio Vista Park Improvements</b><br>201 N Park Vista St.<br><br>PM: Ana | Demolish existing restroom / utility building and replace with new ADA compliant building along with a new stand-alone shade structure and upgraded adjacent hardscape. | <u>Grants:</u><br>CDBG \$650,000<br><br><u>Consultant:</u><br>Geosyntec \$60,495<br><br><u>Contractor:</u><br>Aster Construction Services, Inc. (ACS) \$2,084,225 | <ul style="list-style-type: none"> <li>• Conducted final substantial completion inspection</li> <li>• Contractor finalized remaining items and obtained plumbing, mechanical and fire inspections and sign-offs</li> <li>• Obtained final Building Inspection and approval</li> <li>• Removed construction fence and opened to the public</li> </ul> | <ul style="list-style-type: none"> <li>• Complete minor close-out items and paperwork</li> </ul> |
|----|---|---|---|--|--|



**COMMUNITY SERVICES CAPITAL PROJECTS PROGRESS REPORT - As of March 19, 2026**

|    | <b>PROJECT</b>   | <b>SCOPE</b>   | <b>FUNDING ACTIVITY</b>  | <b>RECENT ACCOMPLISHMENTS</b>  | <b>NEXT STEPS</b>   |
|----|--|--|--|--|---|
| 13 | <b>River Park</b><br>2445 E Orangewood Ave.<br><br>PM: Naomi | Develop an approx. 3.3-acre site purchased from the County of Orange into Anaheim's 69 <sup>th</sup> park. | <u>Grants:</u> <ul style="list-style-type: none"> <li>• LWCF \$1.9M</li> <li>• EEMP \$750,000</li> <li>• State Coastal Conservancy (SCC) \$2M</li> <li>• Rivers &amp; Mtns. Conservancy (RMC) \$750,000</li> </ul><br><u>Consultant:</u><br>Schmidt Design Group \$413,951 | <ul style="list-style-type: none"> <li>• Received 3<sup>rd</sup> plan check review comments from Building and shared with design team</li> <li>• Design team working on Grading Plan revisions based on Public Works plan check comments</li> <li>• Reviewed revised construction specifications document</li> <li>• Began working with Public Works Construction Services (PWCS) Division to prepare for bid advertisement</li> </ul> | <ul style="list-style-type: none"> <li>• Obtain updated plans and resubmit for additional plan check with Building Division and Public Works Dept.</li> <li>• Review draft interpretive sign designs and provide comments to design team</li> <li>• Continue to work with PWCS Division on bid advertisement preparation</li> </ul> |



*\*All projects are funded through park developer fees unless otherwise specified\**



# City of Anaheim

## COMMUNITY SERVICES DEPARTMENT

**DATE:** MARCH 25, 2026  
**TO:** PARKS AND RECREATION COMMISSION  
**FROM:** SJANY LARSON-CASH, DIRECTOR *S. Larson-Cash*  
**SUBJECT:** APPROVAL OF MASTER PLAN FOR MEADOW PARK

---

### **RECOMMENDATION:**

That the Parks and Recreation Commission approve the proposed Master Plan for Meadow Park.

### **DISCUSSION:**

The proposed Meadow Park is an approximately five-acre site that will be constructed in conjunction with the OCVIBE development in Anaheim's Platinum Triangle. Located on what is currently the parking lot for the Anaheim Regional Transportation Intermodal Center (ARTIC), the site will be transformed into a dynamic public green space through a partnership with OCVIBE following the completion of a new parking structure that will replace the existing lot and serve the ARTIC.

Community Services staff have worked closely with OCVIBE to develop a vision and design for the City's future 70<sup>th</sup> park. The final Master Plan includes an open event meadow and stage area, exercise equipment, play area, terraced lawn and walking paths, public art features, shade structures, a mist/cooling installation, picnic and game tables, public restrooms, landscaping, and various other hardscape amenities. The total project cost is estimated at \$34 million. Of this, \$12.7 million will be funded by the City through development impact fees generated by the broader OCVIBE development, with the remaining balance funded by OCVIBE.

Following Commission's approval, the project's design consultant will develop Construction Documents and obtain necessary permits and approvals. Construction of the park will be completed in two phases. The first phase will begin late this calendar year and is anticipated to be finished by April 2028, in advance of the LA Olympics, with the second phase to follow. Upon completion, Meadow Park will be operated and maintained by OCVIBE.

This project is consistent with the 2018 Parks Plan goal of adding new parks in park-poor communities.

### **Attachment:**

1. Master Plan

# MASTER PLAN



## LEGEND

- 1 EVENT MEADOW / LAWN
- 2 THE PORCH
- 3 THE LOOP
- 4 THE TERRACES
- 5 PUBLIC RESTROOMS
- 6 EXERCISE + PLAY AREA
- 7 PICNIC + GAME TABLES
- 8 FOG/MIST FEATURE
- 9 SHADE STRUCTURES
- 10 MEADOW STAGE
- 11 SPACE FOR FOOD TRUCKS
- 12 ANAHEIM SIGN
- 13 PUBLIC ART
- 14 TRASH ENCLOSURE
- 15 STAGE LOADING AREA
- 16 PARK IDENTITY SIGN
- 17 PARK RULES SIGN (EACH ENTRY)
- 18 LEVEL LAWN TERRACES
- 19 MOBILE STAGE (SHOW WAGON)
- 20 SPACE FOR TEMP RESTROOMS
- 21 FUTURE CONNECTIONS