



**BELLE PLAINE DESIGN COMMITTEE
NOTICE OF REGULAR MEETING AND AGENDA
CITY HALL, 218 NORTH MERIDIAN STREET
PLEASE USE THE NORTH ENTRANCE**

**MONDAY, APRIL 7, 2025
5:00 P.M.**

1. CALL TO ORDER.

1.1. Roll Call.

2. APPROVAL OF AGENDA.

3. APPROVAL OF MINUTES.

3.1. Regular Session Minutes of March 3, 2025.

4. BUSINESS.

4.1. Proposed Awnings and Signage: 114 Meridian Street North.

5. ADMINISTRATIVE REPORTS.

5.1. Commissioner Comments.

5.2. Upcoming Meetings.

1. Next Regular Meeting: As Needed

6. ADJOURNMENT.

There may be a quorum of the Belle Plaine City Council present at the meeting.

**BELLE PLAINE DESIGN COMMITTEE
REGULAR MEETING
MARCH 3, 2025**

1. CALL TO ORDER. 1.1. Roll Call.

The Belle Plaine Design Committee conducted a Regular Meeting on Monday, March 3, 2025 at City Hall, 218 North Meridian Street, Belle Plaine, MN. Vice-Chair Lawler called the meeting to order at 5:00 PM with Commissioners Brian Romness, Rick Krant and Cara Cox present. Commissioner Weldon was absent.

Also present was Community Development Director Smith Strack and Council Liaison Hartmann.

2. ELECTION OF OFFICERS

Vice Chair Lawler called for nominations for Chair.

MOTION by Commissioner Lawler, second by Commissioner Romness, to nominate Rick Krant as Chair. Commissioners Lawler, Romness, Hartmann and Cox VOTED AYE. Commissioner Krant ABSTAINED. MOTION CARRIED.

Commissioner Krant resided of the remainder of the meeting.

Commissioner Krant called for nominations for Vice-Chair.

MOTION by Commissioner Lawler, second by Commissioner Hartmann, to nominate Brian Romness as Vice-Chair. Commissioners Lawler, Hartmann, Krant and Cox VOTED AYE. Commissioner Romness ABSTAINED. MOTION CARRIED.

Commissioner Krant called for nominations for Secretary.

MOTION by Commissioner Cox, second by Commissioner Romness, to nominate Hope Lawler as Secretary. Commissioner Hartmann, Krant, Cox, and Romness VOTED AYE. Commissioner Lawler ABSTAINED. MOTION CARRIED.

3. APPROVAL OF AGENDA.

MOTION by Commissioner Romness, second by Commissioner Cox, to approve the Agenda as presented. ALL VOTED AYE. MOTION CARRIED.

4. APPROVAL OF MINUTES. 4.1. Regular Session Minutes of January 6, 2025.

MOTION by Commissioner Lawler, second by Commissioner Romness, to approve the Regular Session Minutes of January 6, 2025. ALL VOTED AYE. MOTION CARRIED.

5. BUSINESS.

5.1. Proposed Awning 128 Meridian Street North.

Community Development Director Smith Strack reviewed the proposed awning for 128 Meridian Street North the Belle Plaine Food Shelf. Smith Strack explained the proposal includes recovering awning and client entrance awning. Smith Strack provided a sample color book to show the proposed awning and script coloring. Smith Strack explained the Design standards are included in the packet.

Commissioner Romness inquired if the color is similar to other awnings in the Downtown. Community Development Director Smith Strack explained it blends well with the downtown noting many new awnings have been dark. Smith Strack explained the colors are similar to approved colors in the design standards.

Commissioner Cox noted the tan won't pop like the white but it will look good with the building.

MOTION by Commissioner Cox, second by Commissioner Hartmann, to approve the proposed Awning. Commissioners Cox, Hartmann and Krant VOTED AYE. Commissioners Romness and Lawler ABSTAINED. MOTION CARRIED.

5.2. Design Committee Duties.

Community Development Director Smith Strack reviewed the Design Committee purpose, City Code language, organizational standards along with the powers and duties. Smith Strack noted Commissioner Weldon has resigned and a new member will be added.

6. ADMINISTRATIVE REPORTS.

6.1. Commissioner Comments.

No Comments were made.

6.2. Upcoming Meetings.

1. Next Regular Meeting: As Needed

Commissioners were reminded of the next upcoming meeting as needed.

7. ADJOURNMENT.

MOTION by Commissioner Lawler, second by Commissioner Cox, to adjourn the meeting at 5:15 PM. ALL VOTED AYE. MOTION CARRIED.

Respectfully Submitted,

Renee Eyrich
Recording Secretary



MEMORANDUM

Design Committee

DATE:	April 7, 2025
FROM:	Cynthia Smith Strack, Community Development Director
AGENDA ITEM:	New Awning and Signage – 114 Meridian St N
BACKGROUND:	<p>Brett Tupy, Yorway Custom Home Builders Inc, Steel Horse Tavern, Inc. proposes the installation of new awnings and signage at 114 Meridian St N.</p> <p>Tupy proposes adding first floor awnings over building openings. Awning color palette to be black. Tupy also proposes a new sign. Tupy is to attend the DC meeting to provide clarity.</p> <p>Images of the proposed and existing façade are attached along with awning frame dimensions. Tupy has confirmed he still plans to replace the window openings with garage doors. The garage doors were approved last fall.</p> <p>It is noted the proposed façade representation may need additional explanation pertaining to the gray area over the awnings and between the sign.</p> <p>The 2016 Design Manual contains design guidelines for awnings in the Downtown. Under guidelines, awnings are to enhance the historic feel of Downtown while providing sun protection for display windows, shelter for pedestrians, and a sign panel for the business. Awnings in the Downtown are to be compatible with the style, composition, materials, colors, and details of the building and with other signs on nearby buildings. Colors employed are to be varied but complementary. Please find Design Manual standards attached.</p> <p>The Design Committee is also to review the proposed wall sign. The sign is not proposed to be lit. Few specific Design Manual standards apply to wall signs, other than those relating to lighting. The DC has approved alternate lighting in the past.</p> <ul style="list-style-type: none">• Maximum distance between sign and building face is one foot.• Building and signage lighting must be indirect, with the light source(s) hidden from direct pedestrian and motorist view.• Lighting and signage must be a separate and distinct. Combined lighting and signage is not encouraged.
ACTION:	Review of the proposed awnings and sign is requested.
SIGNATURE:	



69" HEIGHT X 58" WIDTH (28 sq. ft.)
 1/4" THICK POLYURATHANE W/ ALUMINUM FACE & BACK
 DIGITALLY PRINTED GRAPHICS

2 - 48" X 10' (30" PROJECTION) 1" FRAME
 BLACK SUNBRELLA MATERIAL



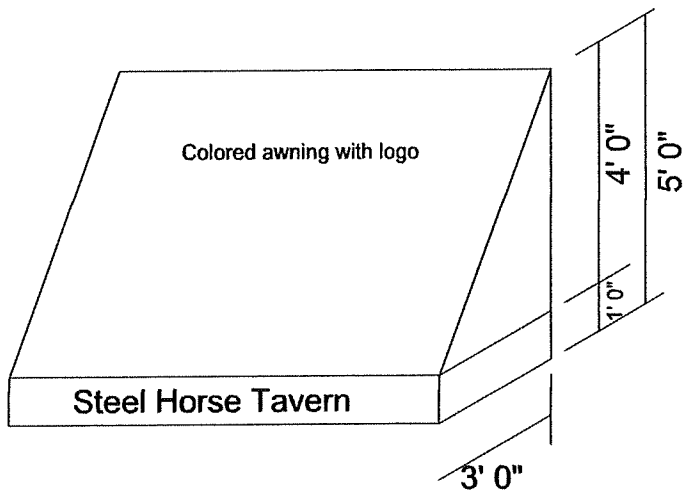
**BOB'S
SIGN
COMPANY**

401 E. Main St.
 Belle Plaine, MN 56011

Lighted Signs & Lighted Letters
 Vehicle Lettering & Graphics
 Magnetic Signs
 Banners
 Installation & Repairs

763-442-8031

This Drawing Is Not To Be Copied Or Reproduced Without Permission From B.S.C.





lite
OPEN

STEEL HORSE

114

Downtown
PRAIRIE

WEBB FERRY



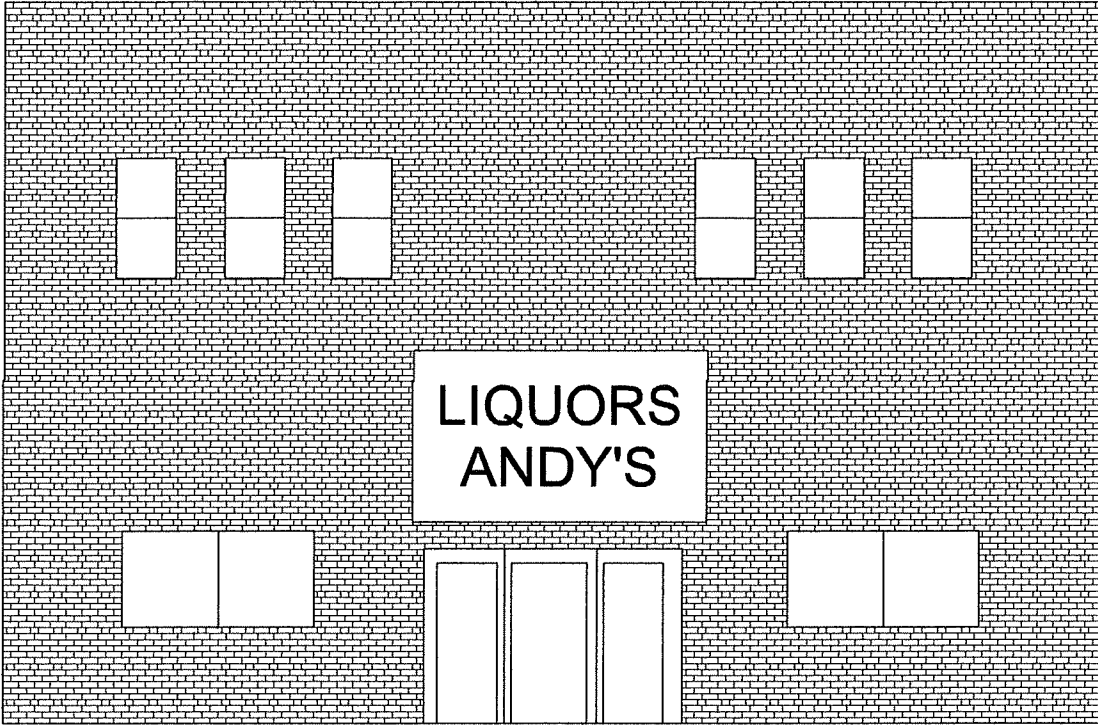
FOR RENT
CALL OR VISIT
WWW.STEELHORSE.COM

The logo for Steel Horse, featuring a white silhouette of a horse rearing up inside a red circle, with the words "STEEL HORSE" and "Savors" below it.

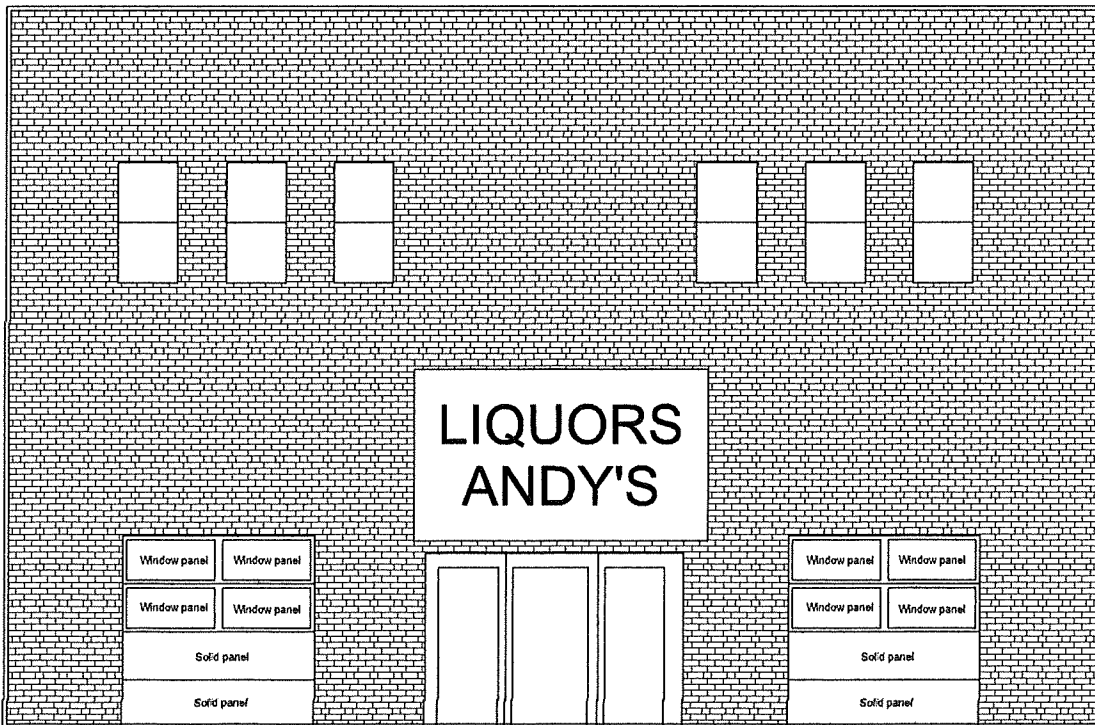
STEEL HORSE
Savors

114
- NORTH MERIDIAN -





Existing elevation 114 N Meridain St. Belle Plaine, MN



Proposed elevation 114 N Meridain St. Belle Plaine, MN

G-4400

FULL VISION DOOR ALUMINUM FRAME THICKNESS: 1 3/4"



G-4400 doors, 14' x 16', Anodized extrusion

FEATURES AND BENEFITS

A 6 1/4" TUBULAR EXTRUSIONS

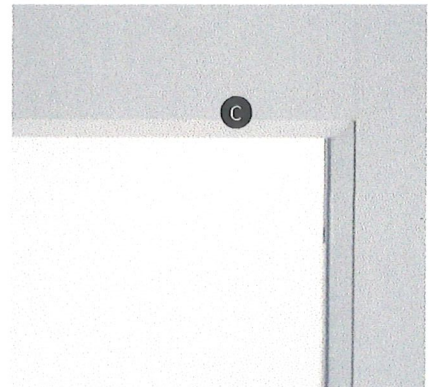
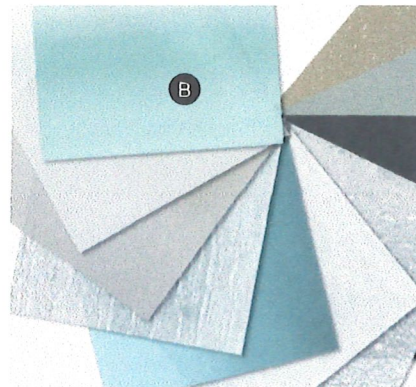
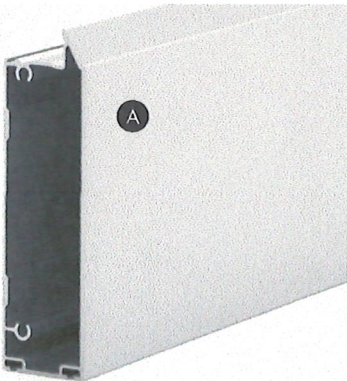
- Built with 6 1/4" extrusion at perimeter (top, bottom and double hinge end) for **more structural strength**.
- Less quantity of extrusions provide a **more aesthetic and modern look**. Thus, the windows are bigger to let in maximum light.

B CHOICE OF WINDOWS

- More than 20 types of glass are available for a **look that blends beautifully** with the architectural style of the building.
- Meets all **safety requirements** since most types of glass are offered tempered or non-tempered.

C FLAWLESS FINISH

- **Highly precise finish** of the assembly joints for a more attractive structure.
- Built with thermo windows that **completely cover up the spacer** and the silicone glazing.



COLORS

Standard

Semi-custom†

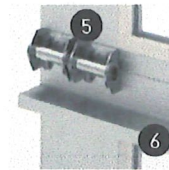
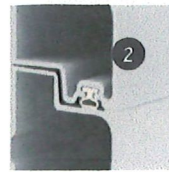


† Semi-custom color doors are coated with an acrylic resin-based liquid painting.

Colors may slightly vary from image.

PANEL CONSTRUCTION

- 1 **1 3/4" (44.5 mm) thick door**
 - Tubular aluminum extrusion (6063 T5), 1/8" (1.6 mm) thick
 - Rigid vinyl (PVC) pane molding
 - Thicker extrusion 1/8" (3.2 mm) at fastening points for more strength
 - 6 1/4" (159 mm) perimeter extrusion (top, bottom and double hinge end)
- 2 **Weatherstripping between sections** efficiently prevents air infiltration.
- 3 **U-shaped tubular bottom weatherstripping** made of thermoplastic elastomer (TPE) ensures the weathertightness of the threshold. Remains flexible and watertight during cold weather, to -62°F (-52°C).
- 4 **Perimeter weatherstripping (jambs and lintel)**
Aluminum extrusion base with double-edge weatherstripping in arctic vinyl.
- 5 **Hinges equally spaced on the door** for a better look.
- 6 **Integral reinforcement strut** for doors 14' (4267 mm) wide and over.



Interior view



Exterior view

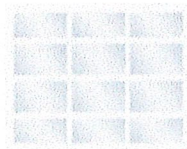
IMPORTANT: The full vision door should not be used for insulation properties.

SIZES

		Number of units per section ¹	Widths
Widths In 1" (25 mm) increments	From 4' to 24' (1.2 m to 7.3 m)	2	96" to 111" (2438 mm to 2819 mm)
		3	112" to 147" (2845 mm to 3734 mm)
Heights In 1" (25 mm) increments	From 6' to 18' (1.8 m to 5.5 m)	4	148" to 194" (3759 mm to 4928 mm)
		5	195" to 230" (4953 mm to 5842 mm)
		6	231" to 264" (5867 mm to 6706 mm)
		7	265" to 288" (6731 mm to 7315 mm)

¹Contact our Technical Department for the possibility of modifying the number of units per section.

PANELS DESIGNS



Clear Anodized



Clear Anodized with Kick Proof



Clear Anodized with Silver G-5000 panel

HARDWARE

Steel tracks: • 2" (50 mm), 13-gauge or 14-gauge
• 3" (76 mm), 12-gauge

WARRANTIES (LIMITED)

10 years against seal defects on Standard windows
10 years against any perforation of aluminum due to rust
1 year on other door components



8500 25th Avenue,
St-Georges, QC
G6A 1K5 Canada

1 866 960-2828
info@garaga.com
garaga.com

WINDOWS²



Clear



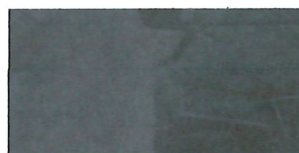
White Sandblasted



Black Satin



SuperGrey Tinted



Graylite



Mirrorpane



Pinhead

² Some windows are available in 1/8" Single Pane or 1/4" Thermopane in Glass or Acrylic. The option of tempered glass is available in some cases. Contact your Garaga dealer for more details.

YOUR
GARAGA
DISTRIBUTOR

FSC LOGO