

Awendaw Municipal Park Board



AWENDAW MUNICIPAL PARK MASTER PLAN 2026



A gateway to nature, protected today and
open for generations to explore.



**AWENDAW
MUNICIPAL PARK**



ACKNOWLEDGEMENTS



Mayor

Chris Crolley

Town Council

Paul Brown

Rodney Porcher

Grace Gasper

Kent Prause

Wendy Helms

John Timmons

Municipal Park Board

Ashley Blythe

Andrea Frazier

Jeffery Coan

Chris Ott

Chris Colson

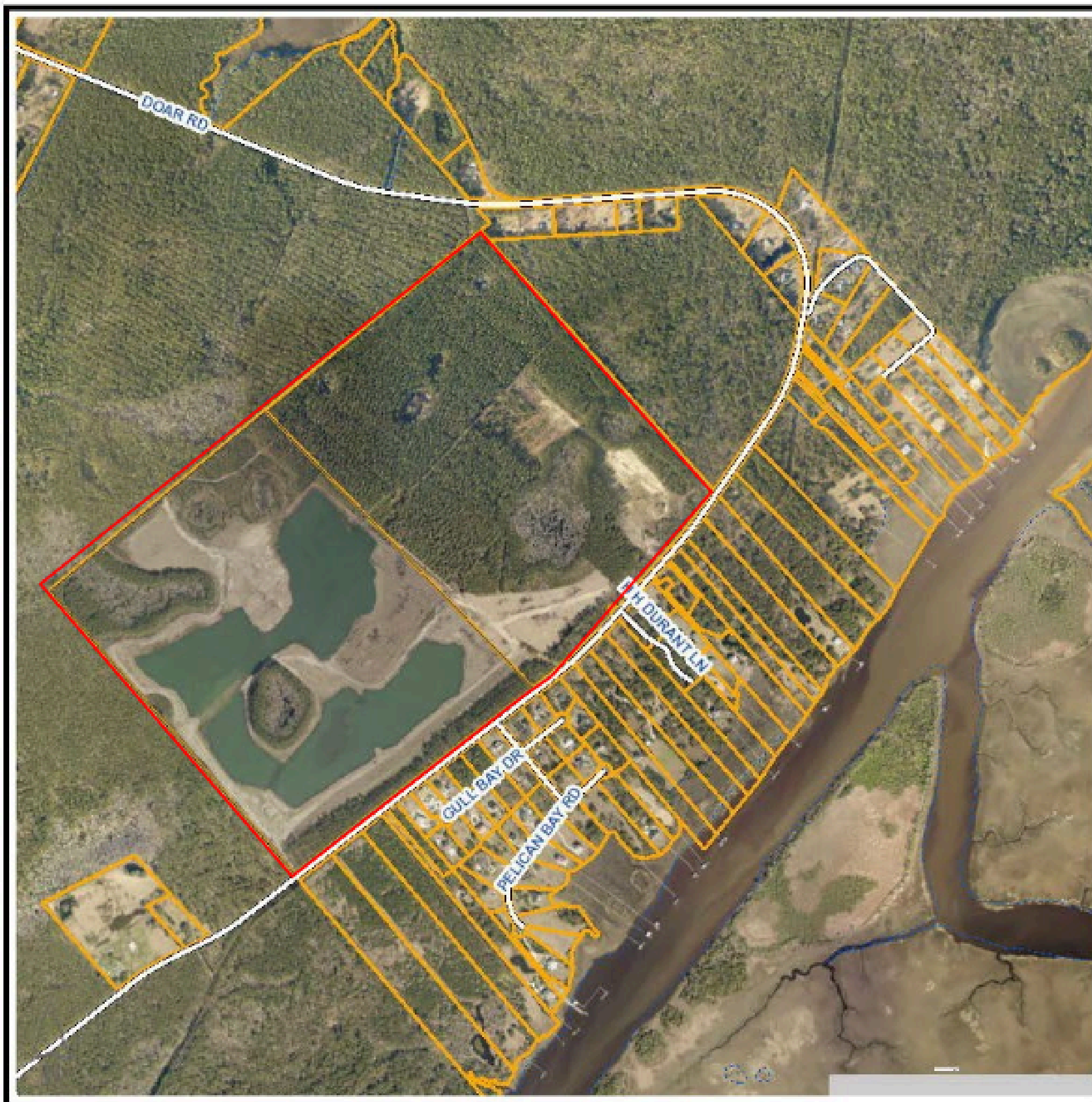
William Pepper-Alston

Ken Daniels

PARK HISTORY

*A Park Created Through
Conservation Investment*

- 290.85 acres acquired in 2009 through a \$5,170,000 Charleston County Greenbelt Grant
- Purchased under the Jefferson Tract Greenbelt Agreement
- Legally restricted for passive park use
“Passive park uses consist of, and are limited to, walking, jogging, biking, crabbing, fishing, water recreation, and wildlife/nature observation and enjoyment.”
- Intended to preserve open space, natural habitat, and rural character in perpetuity



Awendaw Municipal Park

#

0 700 1,400 2,800 ft
1 inch = 1,039 feet



WHY OUR PARK IS SPECIAL

**Borders Francis Marion
National Forest**

263,900 acres of protected land

**Largest Municipal
Park in the County**

292 acres

**Connects to East Coast
Greenway Trail**

“Appalachian Trail for cyclists”

**One of Largest Fresh Water
Lakes in the County**

~50 acres

Municipal Parks in Charleston County.

- | | |
|----------------------------------|------------------|
| 1. Awendaw Municipal Park | 292 acres |
| 2. West Ashley Park | 260 acres |
| 3. Hampton Park | 60 acres |
| 4. Bees Landing Rec Center | 25 acres |
| 5. Waterfront Park | 10 acres |

**One of the Darkest
Areas along the
SC Coast**

“Dark Skies”



STRATEGIC DIRECTION

**PHASE 1
2026-2028**

Opening the Gates
Responsibly



**PHASE 2
2029-2031**

Building Community
Value



**PHASE 3
2032-2035**

Securing Awendaw's
Legacy

*Open safely and simply first, then evolve deliberately as
funding, partnerships, and community support grow.*



PHASE 1 - Foundational Opening (2026-2028)

Goal: Open the park safely and simply, prioritizing protection of open space.

Outcome: Park is safely open to passive use.



Objectives

- Establish safe public access
- Provide basic visitor infrastructure
- Protect natural resources
- Develop lasting partnerships
- Build public awareness



Priorities

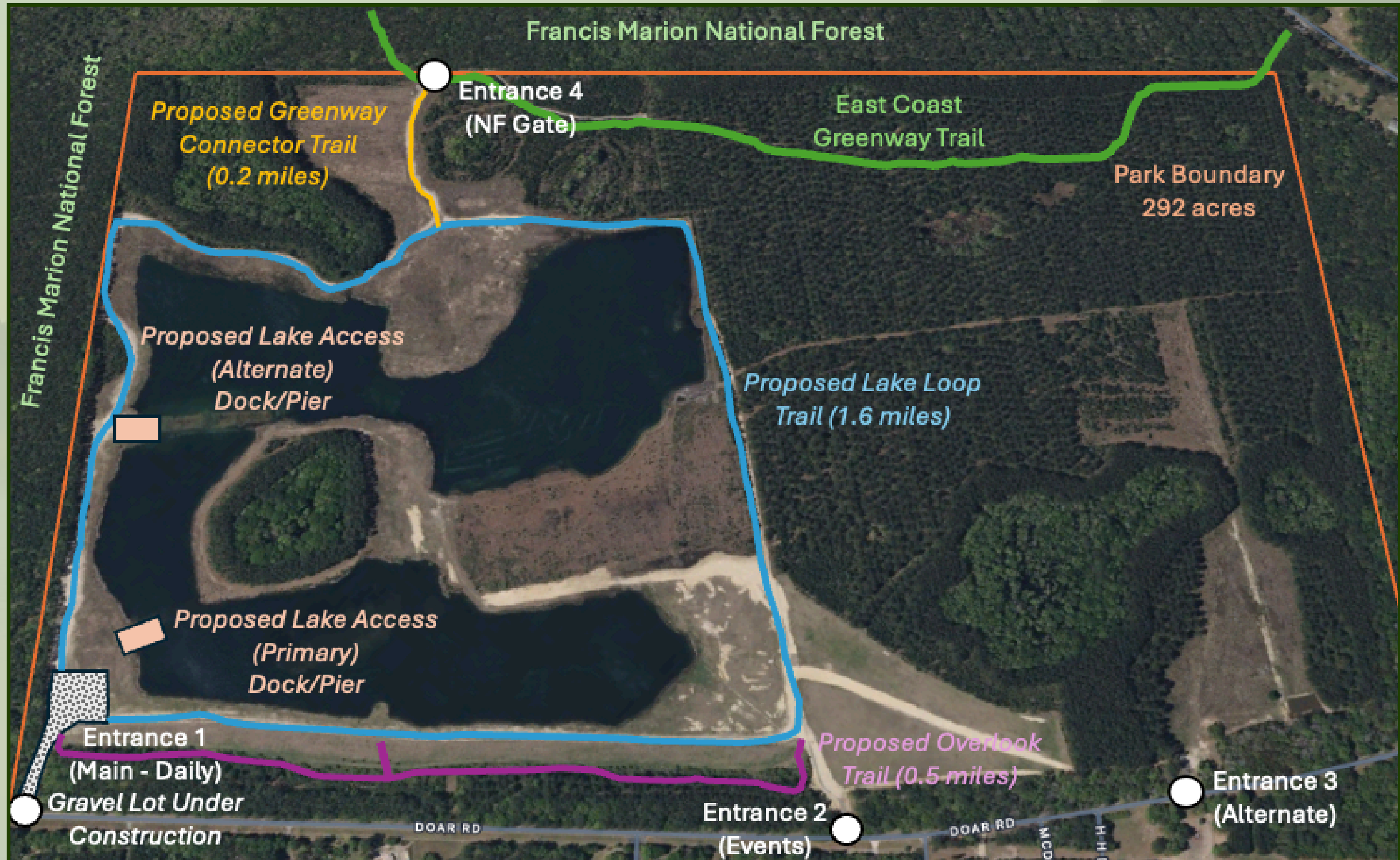
- Safety & site stewardship
- Parking area development & entrance enhancements
- Basic restroom solution
- Initial trail development
- Lake safety & access
- Partnerships



Projects

- Gravel parking area at entrance 1
- Parking area fencing & controlled gate access
- Security cameras at entrances & locations throughout the park
- Signage (rules, hours, wayfinding, liability)
- Initial trail development
- Lake access - controlled boating & fishing

PHASE 1 - Awendaw Municipal Park - Conceptual Map



PHASE 1 - Current Progress - As of Feb 2026

Security

Cellular cameras installed at all four entrances.



Signage

Temporary signs installed at entrances 1,2,&3. Permanent larger signs on order.

WELCOME TO

A PLACE TO CONNECT WITH NATURE AND COMMUNITY



HOURS: DAILY - DAWN to DUSK

AWENDAW MUNICIPAL PARK

PARK RULES

BE SAFE & RESPONSIBLE	RESPECT THE ENVIRONMENT
No Alcohol or Drugs	Pack Out Trash or Use Approved Bins
No Weapons	Dogs Must Be Leashed
No Fires	Beware of Alligators
FACILITY USE	RECREATIONAL ACTIVITIES
Park Only in Designated Areas	Hike/Bike Only on Approved Trails
No Motor Vehicles Outside Parking Areas	Fish in Designated Areas - Catch & Release Only
Emergency - Dial 911 Patrolled by Charleston County Sheriff's Office	Boating - Hand Launch, Human Powered or Electric Trolling Motor Only

WE ARE COMMITTED TO PRESERVING THE NATURAL BEAUTY AND SAFETY OF OUR PARK FOR EVERYONE

Entrance 1

Gravel Parking Lot Installed - Awaiting Fencing



PHASE 2 - Enhancing Access, Comfort & Engagement 2029-2031



Goal: Nature remains the defining feature with thoughtful enhancements to support passive use.

Outcome: Park becomes a recognizable town asset with structured amenities and improved visitor experience.



Objectives

- Expand recreational opportunities
- Improve comfort and accessibility
- Enhanced maintenance
- Develop identity
- Increase partnerships



Priorities

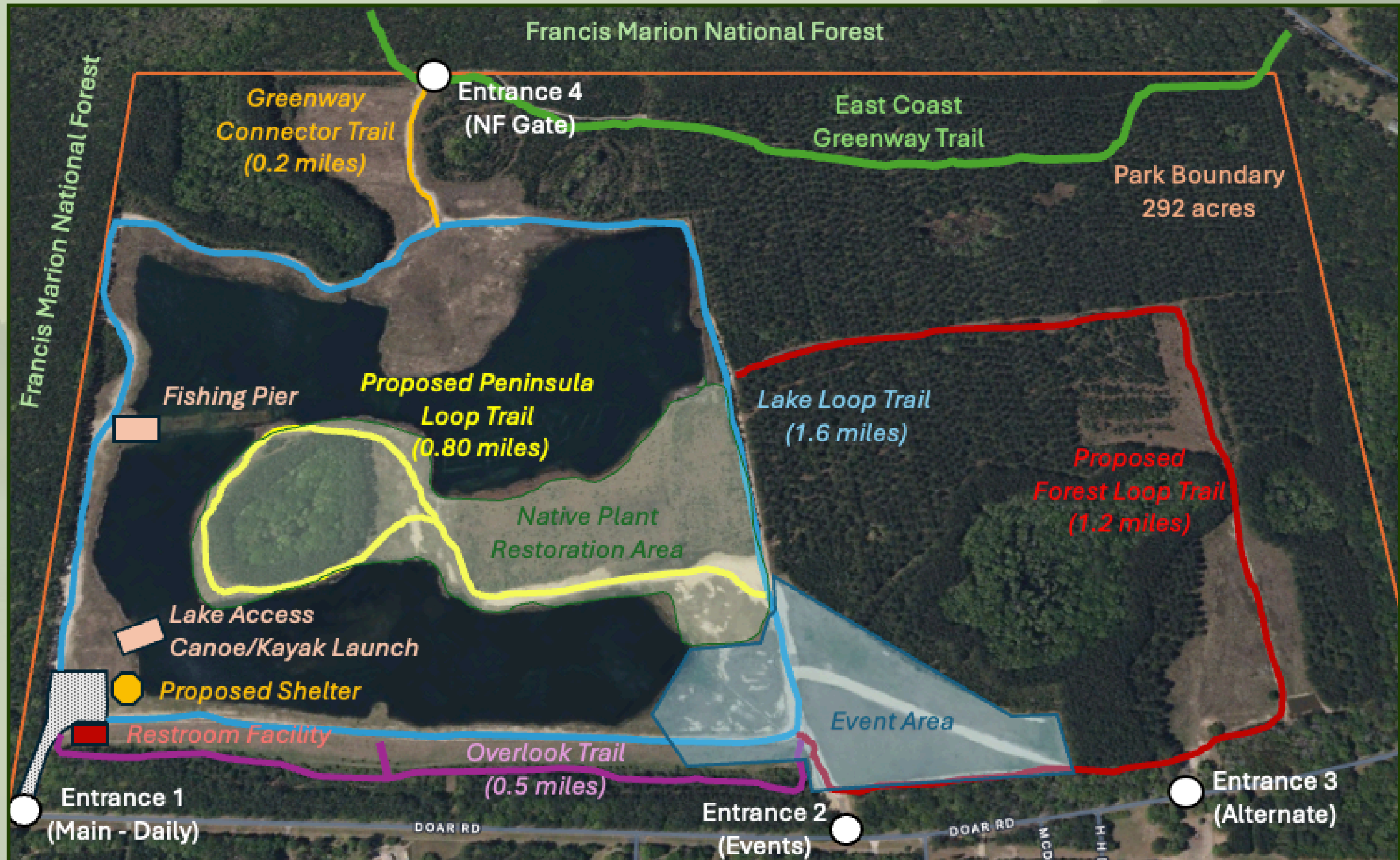
- Permanent restroom facility
- Expand trail network
- Lake improvements
- Gathering pavilion
- Park manager position established
- ADA accessibility upgrades



Projects

- Construct permanent restroom building(s)
- Develop multi-loop trail system
- Add fishing pier and canoe/kayak launch
- Construct an open-air shelter/picnic pavilion
- Interpretive signage (history, local ecology, dark skies)
- Native landscaping restoration areas
- Lake fish habitat improvements

PHASE 2 - Awendaw Municipal Park - Conceptual Map



PHASE 3 - Legacy & Signature Features 2032-2035

Goal: This phase begins once the park is operating sustainably and effectively.

Outcome: Awendaw Municipal Park stands as the Lowcountry's premier model for passive recreation and long-term land stewardship.



Objectives

- Create long-term financial sustainability
- Deepen conservation commitment
- Establish regional identity
- Formalize enduring partnerships



Priorities

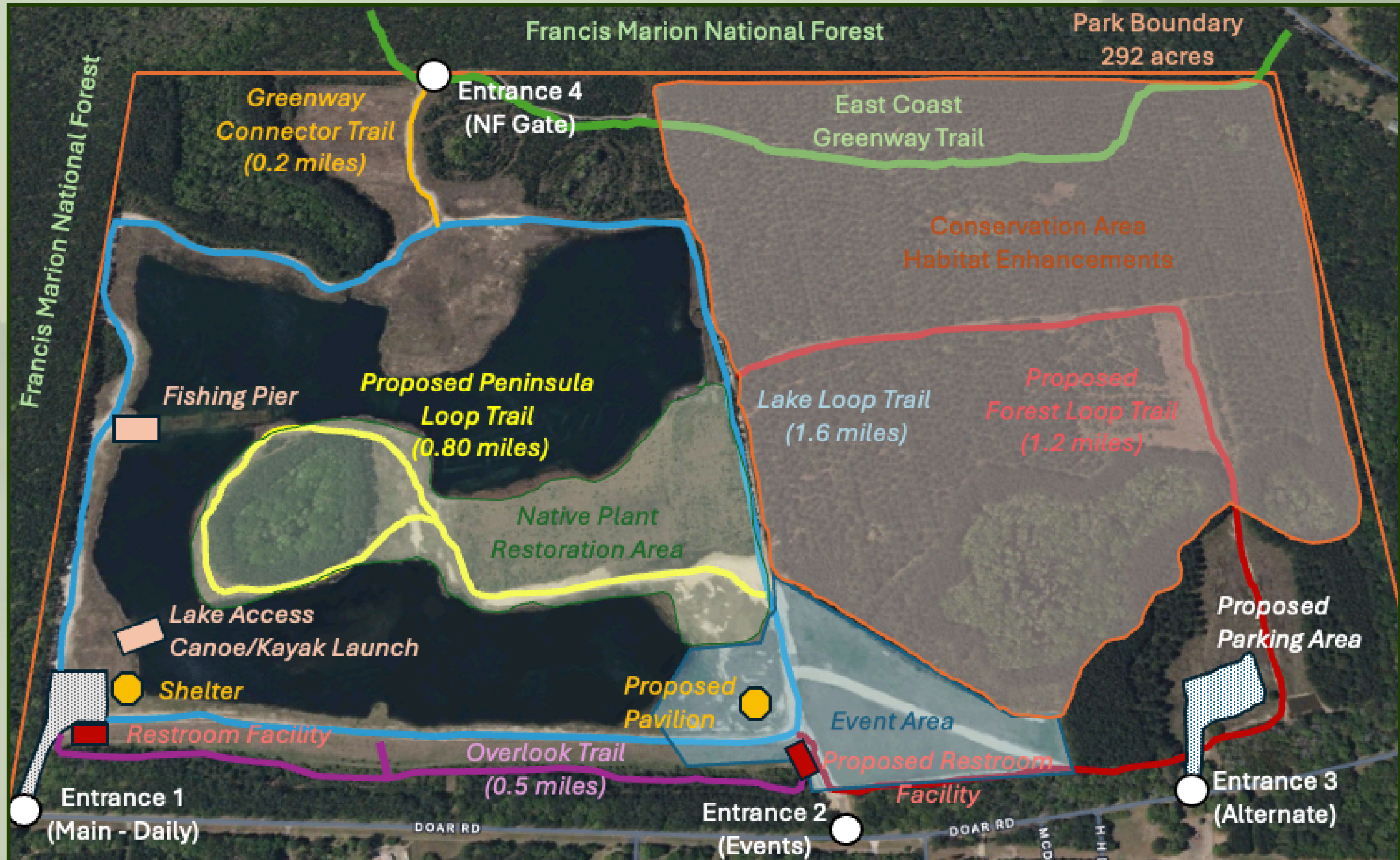
- Signature feature development
- Environmental education
- Dark sky positioning/certification
- Revenue-neutral enhancements



Projects

- Event lawn with power access
- Long-term habitat restoration initiatives
- Expanded parking areas
- Additional restroom facility
- Enhanced lake access
- Expanded trail network

PHASE 3 - Awendaw Municipal Park - Conceptual Map



ALIGNMENT WITH AWENDAW'S COMPREHENSIVE PLAN



Guiding Principles

1. **Community Character**
2. **Rural Lifestyle**
3. **Natural Environment**
4. **Built Environment**
5. **Rural Density**
6. **Circulation**
7. **Commercial Services**
8. **Safety**
9. **Community Culture**
10. **Sustainability**

Community Character & Rural Lifestyle

- Preserves Awendaw's identity as a rural, coastal, and forest community
- Supports fishing, wildlife, and nature-based traditions and protections

Natural Environment

- Protects wetlands, woodlands, and wildlife habitat
- Maintains scenic vistas and natural open spaces
- Supports water quality and wildlife habitat protection

Built Environment & Rural Density

- Keeps development subordinate to the natural landscape
- Preserves open space rather than increasing residential density

Circulation

- Expands safe, non-vehicular access through trails and paths
- Supports regional connectivity through the East Coast Greenway

Commercial Services & Sustainability

- Supports eco-tourism consistent with rural character
- Reflects long-term stewardship and conservation of resources

Awendaw Municipal Park serves as the living model of the Town's commitment to sustainable growth, environmental stewardship, and preservation of its peaceful rural character.

Awendaw Municipal Park Board



AWENDAW MUNICIPAL PARK MASTER PLAN 2026



A gateway to nature, protected today and
open for generations to explore.



**AWENDAW
MUNICIPAL PARK**

