



**City of South Fulton, Georgia**

5440 Fulton Industrial Blvd.  
South Fulton, GA 30336  
Phone: 470-552-4311  
cityofsouthfultonga.gov

## **Agenda**

### **City Council Work Session**

*The Honorable Carmalitha Gumbs, Mayor*  
*The Honorable Catherine F. Rowell, District 1*  
*The Honorable Aaron V. Johnson, District 2*  
*The Honorable Helen Z. Willis, District 3*  
*The Honorable Jacey Sebastian, District 4*  
*The Honorable Keosha B. Bell, District 5*  
*The Honorable Natasha Williams-Brown, District 6*  
*The Honorable Linda B. Pritchett, District 7*

---

**Tuesday, February 24, 2026**

**4:00 PM**

**City Hall**

---

#### ***SOUTH FULTON CITY COUNCIL MISSION STATEMENT:***

*To provide exceptional customer service that sustains a safe, inclusive, innovative, and an economically vibrant city.*

<b>Live-stream:</b>	<b>Public Meeting Portal (Civic Clerk):</b> <a href="https://southfultonga.portal.civicclerk.com">https://southfultonga.portal.civicclerk.com</a>
---------------------	--

<b>Public Comment:</b>
------------------------

- I. Meeting Called to Order - Mayor Carmalitha Gumbs**
- II. Roll Call - City Clerk Corey Adams**
- III. Presentations**
  - A. Roosevelt Livable Centers Initiative (LCI) Plan Presentation, Brian Dorelus, Vice President, Aerotropolis Atlanta
  - B. Animal Control Presentation
- IV. Executive Session, if necessary**
- V. Adjournment of Meeting**



# AEROTROPOLIS<sup>®</sup> ATLANTA

LAND HERE. TAKE OFF.

**Presented by:**

**Brian Dorelus, Vice President**



*Brian Dorelus*

**Vice President**

# Agenda

## Aerotropolis Atlanta Alliance - Regionalism

Team, Strategy (B1.0 and B2.0) and Core Initiatives

## Aerotropolis LCI Planning Success

Aerotropolis Greenway Plan (2018), Willingham Drive (2021) and Tara Blvd (2024 - Award Winning)

## Roosevelt Hwy (2026 LCI App-Ask) -City of South Fulton **\*(6.17 miles) 25%**

Q&A



# MEET OUR TEAM



*Shannon James*  
**President & CEO**



*Valencia White*  
**Office Manager**



*Chante Foster*  
**Marketing & Communications  
Manager**



## What is Aerotropolis Atlanta???

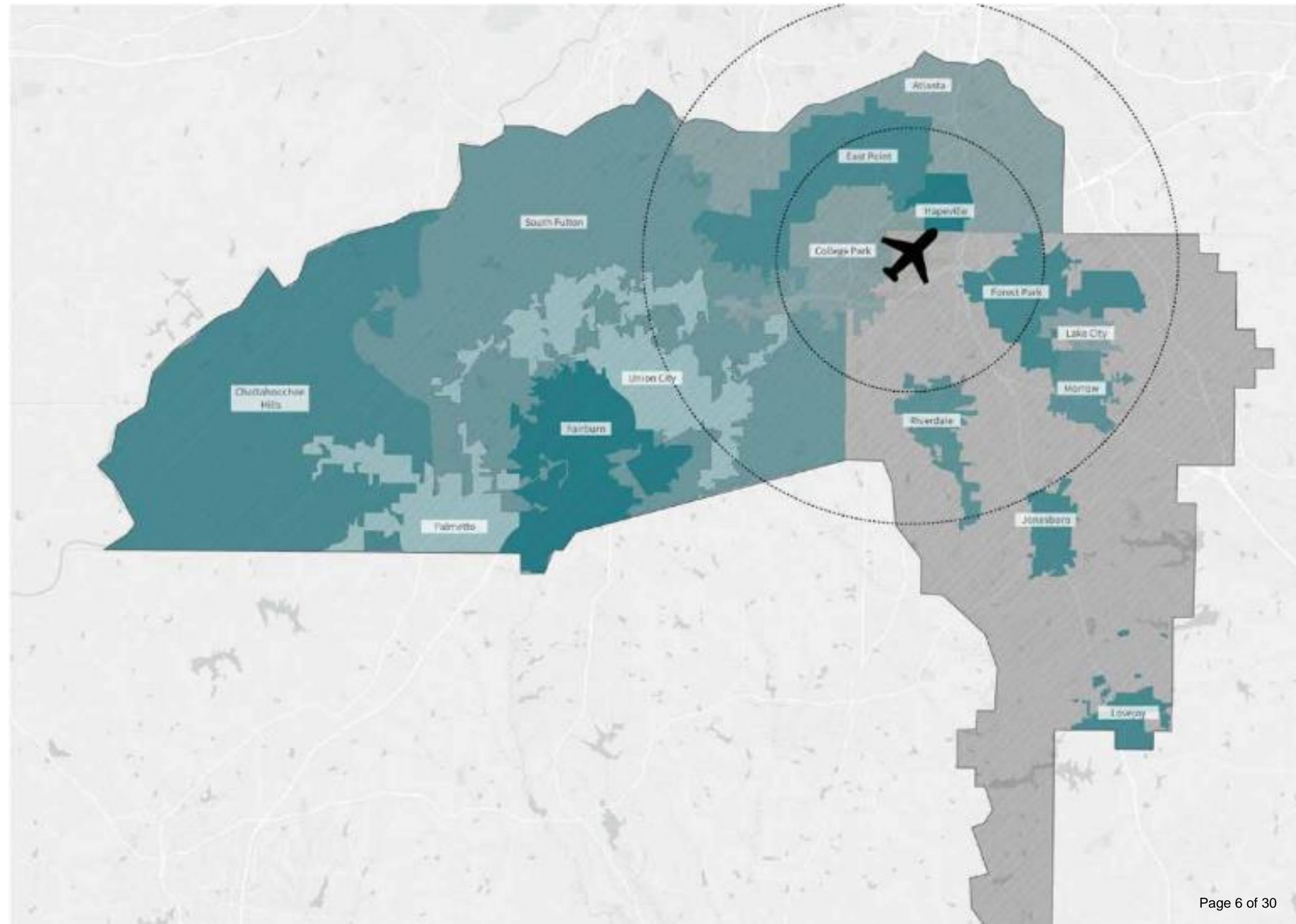
- Incorporated November 21st, 2014
- Mission: To serve as a catalyst for regional economic competitiveness for the area surrounding Hartsfield-Jackson Atlanta International Airport in South Fulton and Clayton County (15 jurisdictions).
- Vision: To become an inclusive world-class destination for all those who live, learn, work, and play in the Aerotropolis region.
- Governed by a 44-member board of top business executives, local highly elected officials and non-profit leaders
- Key Initiatives: Regional Economic, Workforce and Community Development including International relations
- Anchor Institution: Hartsfield-Jackson Atlanta International Airport
- Core Competency: Master convener for regional planning and coordination
- Core Strategy: Create a central business district surrounding ATL (destination) to allow momentum to expand into secondary and tertiary boundaries

# The Aerotropolis Region

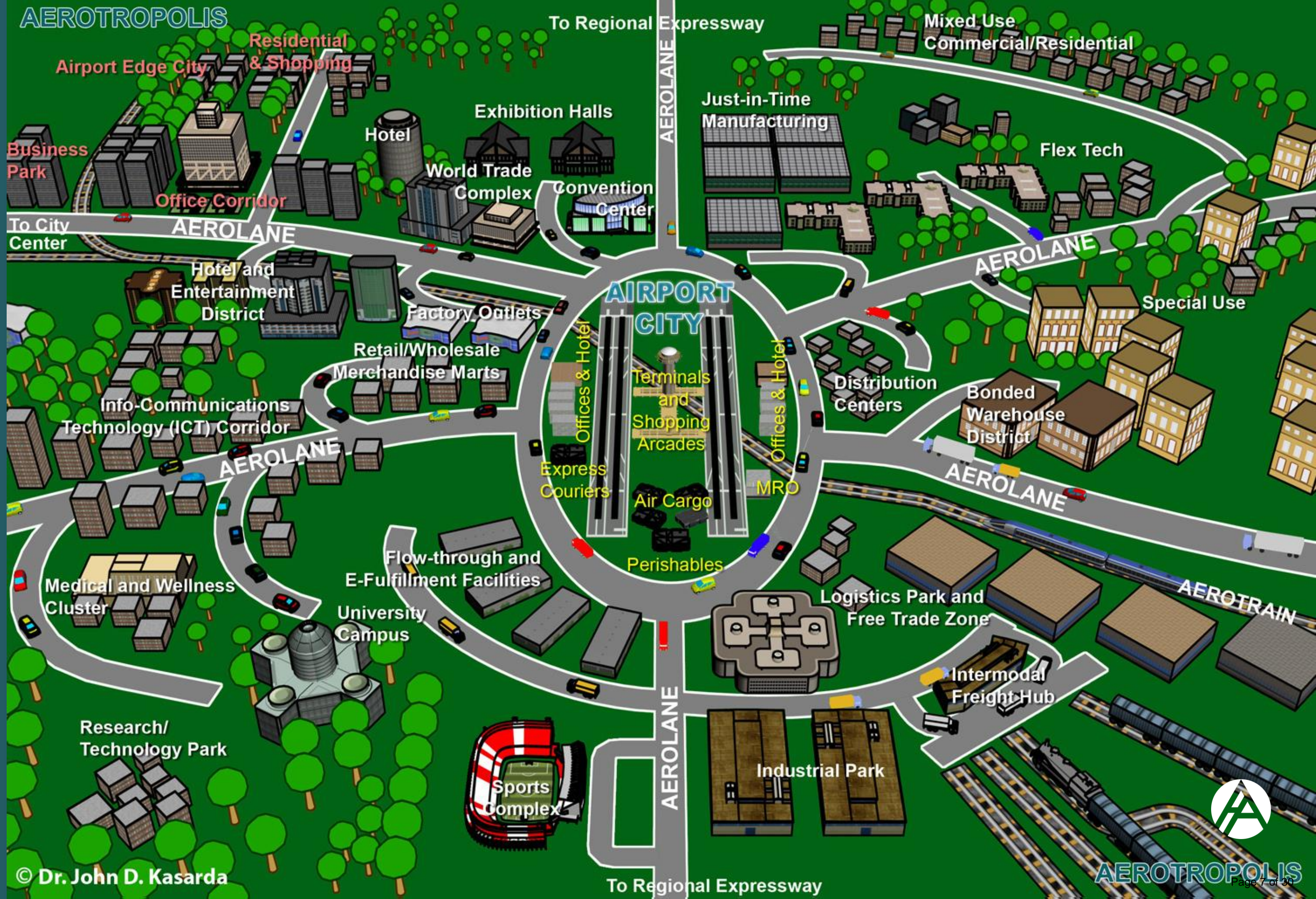
- 176 square miles
- 550,000 people
- Consists of various cities, and parts of Fulton and Clayton counties.

## BLUEPRINT MEMBER CITIES

- Atlanta
- College Park
- East Point
- Fairburn
- Forest Park
- Hapeville
- Lake City
- Jonesboro
- Riverdale
- Union City
- Lovejoy
- South Fulton
- Palmetto
- Chattahoochee Hills
- Unincorporated Clayton County



# AIRPORT CITY





# AEROTROPOLIS ATLANTA

## **THE AEROTROPOLIS ATLANTA BLUEPRINT**

*A VISION AND STRATEGY FOR THE ATLANTA REGION*

2016

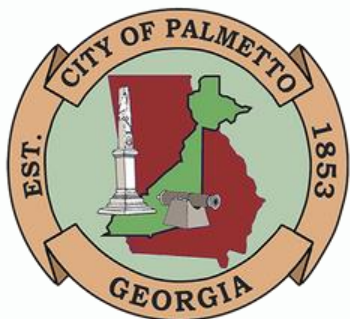
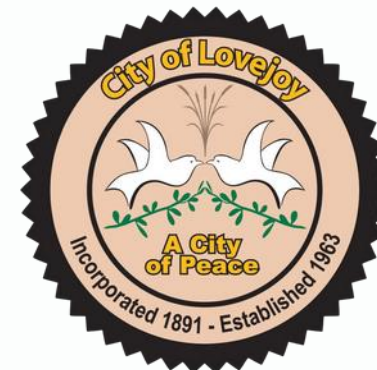
An aerial photograph of the Hartsfield-Jackson Atlanta International Airport. The image shows the main terminal building, numerous aircraft parked at gates, taxiways, and runways. A large, semi-transparent teal shape is overlaid on the right side of the image, containing the text. The sky is blue with some light clouds.

## Blueprint 2.0 Vision

To capitalize on our regional brand as the gateway to the world and our commitment to enhancement, elevation, and expansion of our corporations & communities.



# OUR INVESTORS



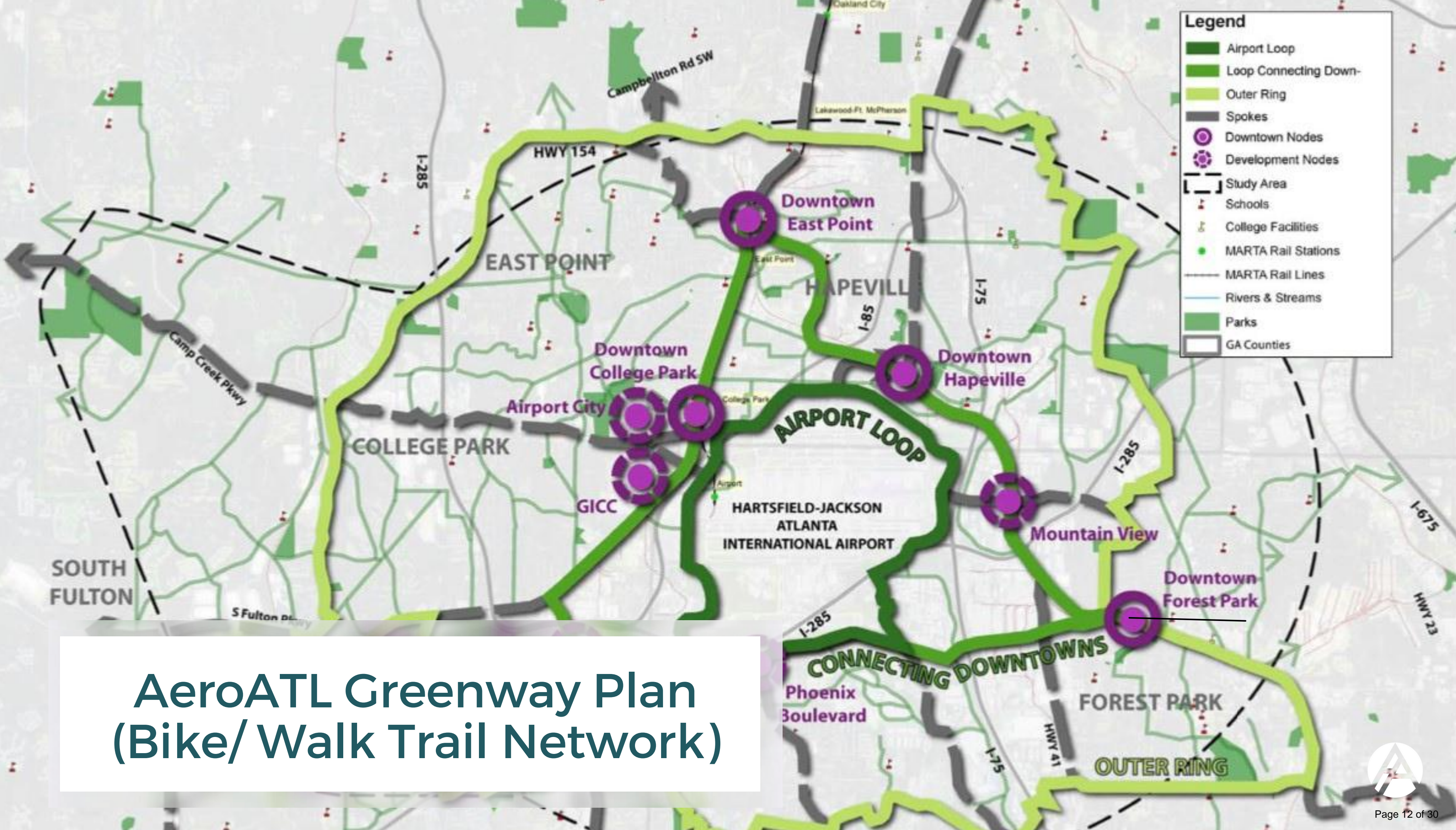
# Core Initiatives

Economic  
Development

\*Community  
Development

Workforce  
Development





# AeroATL Greenway Plan (Bike/ Walk Trail Network)



HEADWATERS WALK

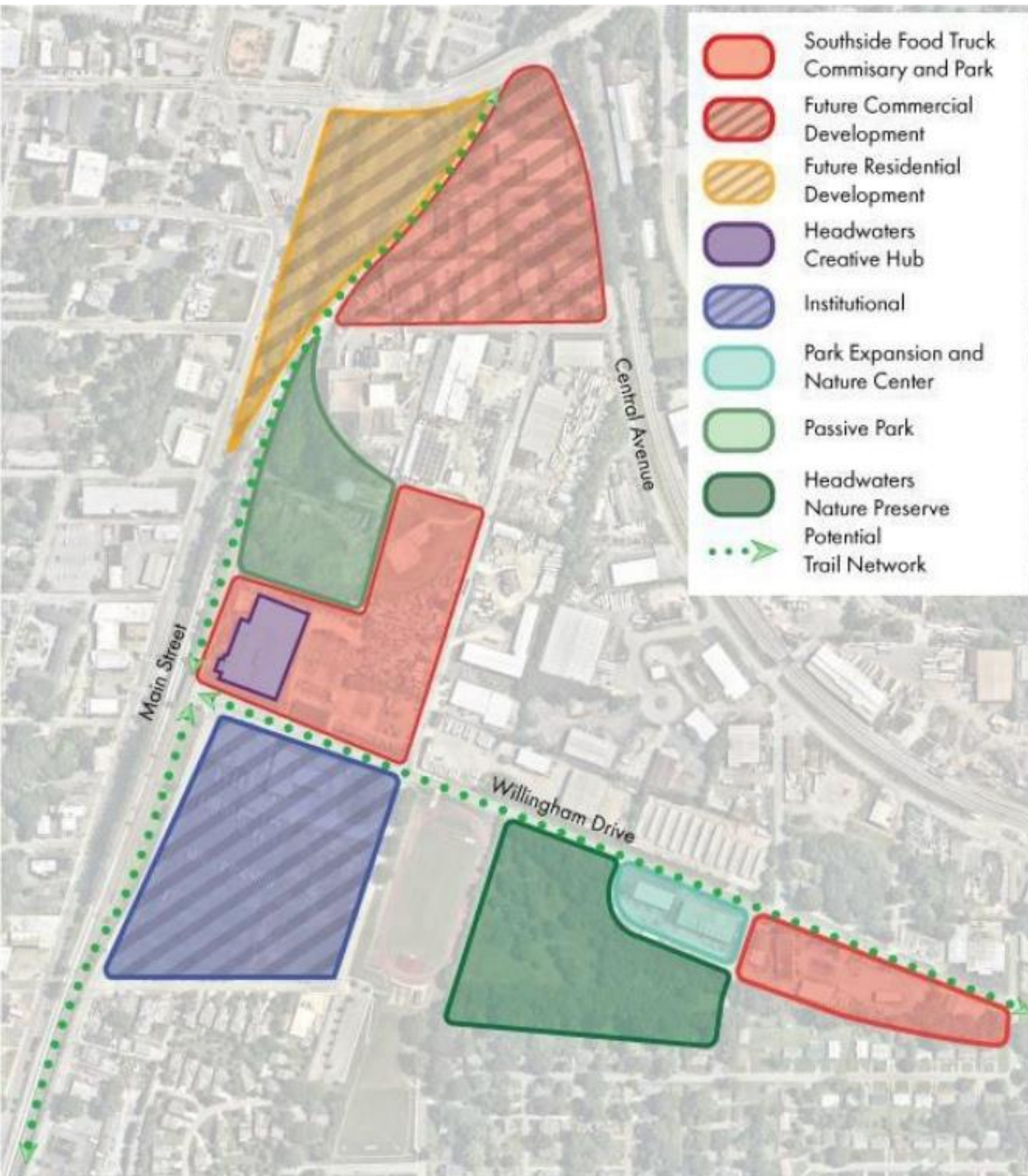
Urban Discovery

# Willingham Drive Corridor Study (2021)



# Catalytic Sites

## Headwaters District



BREWERY



FOOD TRUCK



FLEX OFFICE



HEADWATERS TRAIL



NATURE CENTER

- **Centered on Headwaters Nature Preserve and Headwaters Hub**
- **Headwaters Hub**
  - **Brewery**
  - **Commercial Kitchens**
  - **Artisan Workspace**
  - **Makerspace**
  - **Flexible Office**
  - **Community Event Space**
- **Food truck park and commissary**
  - **Southside food truck hub**
- **Gateway to/from Main Street**
- **Nexus to future path connections**
- **Connections to MARTA stations**
- **Pop-up Restaurant/Retail**
- **MARTA bridge and wall mural**
- **Potential future greenspace**
- **Additional development sites**



**2**  
**WILLINGHAM DRIVE**  
The headwaters flow alongside Willingham Drive from the railroad tracks down to I-85, threading through backyards, behind parking lots, businesses, and hotels, touching all three of the Tri-Cities.



**3**  
**VIRGINIA CROSSINGS**  
South of I-85, the creek appears in a stand of trees before it is capped beneath a 7-acre parking lot. Look down this storm drain to see the water rushing below.



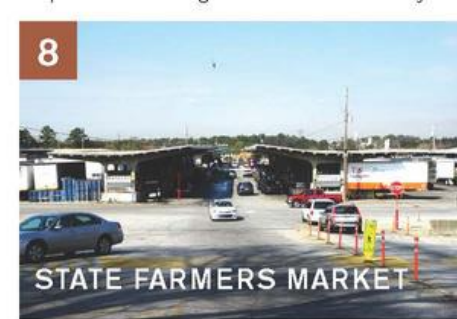
**4**  
**DELTA FLIGHT MUSEUM**  
Next to Delta Air Lines headquarters, this fenced-off channel is the last place where you can see the headwaters before they disappear into a large culvert that runs under the airport for 1.5 miles.



**5**  
**BETWEEN RUNWAYS**  
The river appears briefly between culverts, below the elevated runways. The airport uses this opening to capture stormwater overflow and manage spills when they occur.



**6**



**8**  
**STATE FARMERS MARKET**  
This food distribution hub sits within a massive industrial district that drains into the headwaters. Revitalizing this market with green infrastructure would not only benefit the Flint, but create a more welcoming setting for community retail.



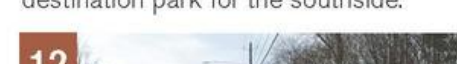
**9**  
**ATLANTA SOUTH PARKWAY**  
The Flint River winds quietly south of the airport through a nondescript office park and warehouse district. With trails and greenspaces, the river could provide a serene connection between airport area job centers.



**10**  
**MUD CREEK**  
This tributary is almost invisible as it runs between the airport and I-75, but when it swells with stormwater from the adjacent industrial district, it's just as big as the main stem of the Flint. It has potential to support connected trails.



**11**  
**CONFLUENCE**  
The area south of Vulcan Materials Forest Park quarry where the headwaters come together is a vast, wooded floodplain. With better flood management, this area could be a destination park for the southside.



**12**

# FINDING THE FLINT



# Tara Boulevard LCI

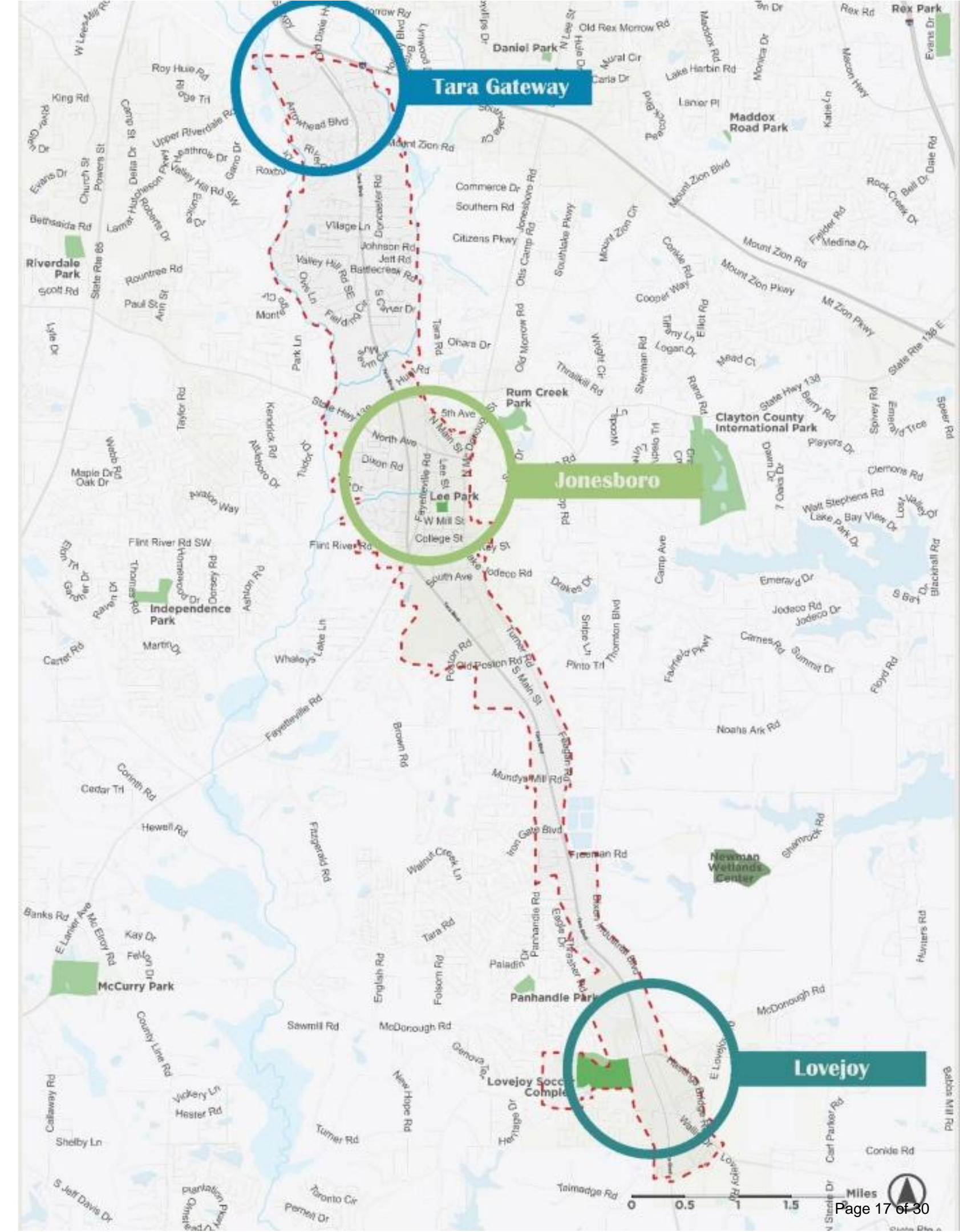
August 21, 2024

## The Study Area

- The Tara Boulevard LCI Study is a comprehensive study to rethink how we view the **11-mile corridor**.
- The process **builds consensus among Clayton County, Jonesboro, and Lovejoy community** members, resulting in a roadmap to bring the community closer to its **identified vision**.
- The study identified opportunities for **housing (including affordable), services, and mobility improvements**.



- Study Area
- Flint River
- Waterbodies
- Parks
- Cities and Towns
- Newman Wetland Center





# Corridor-Wide Strategy

## A Safe + Connected Tara Blvd

### 1- A TRANSIT CORRIDOR

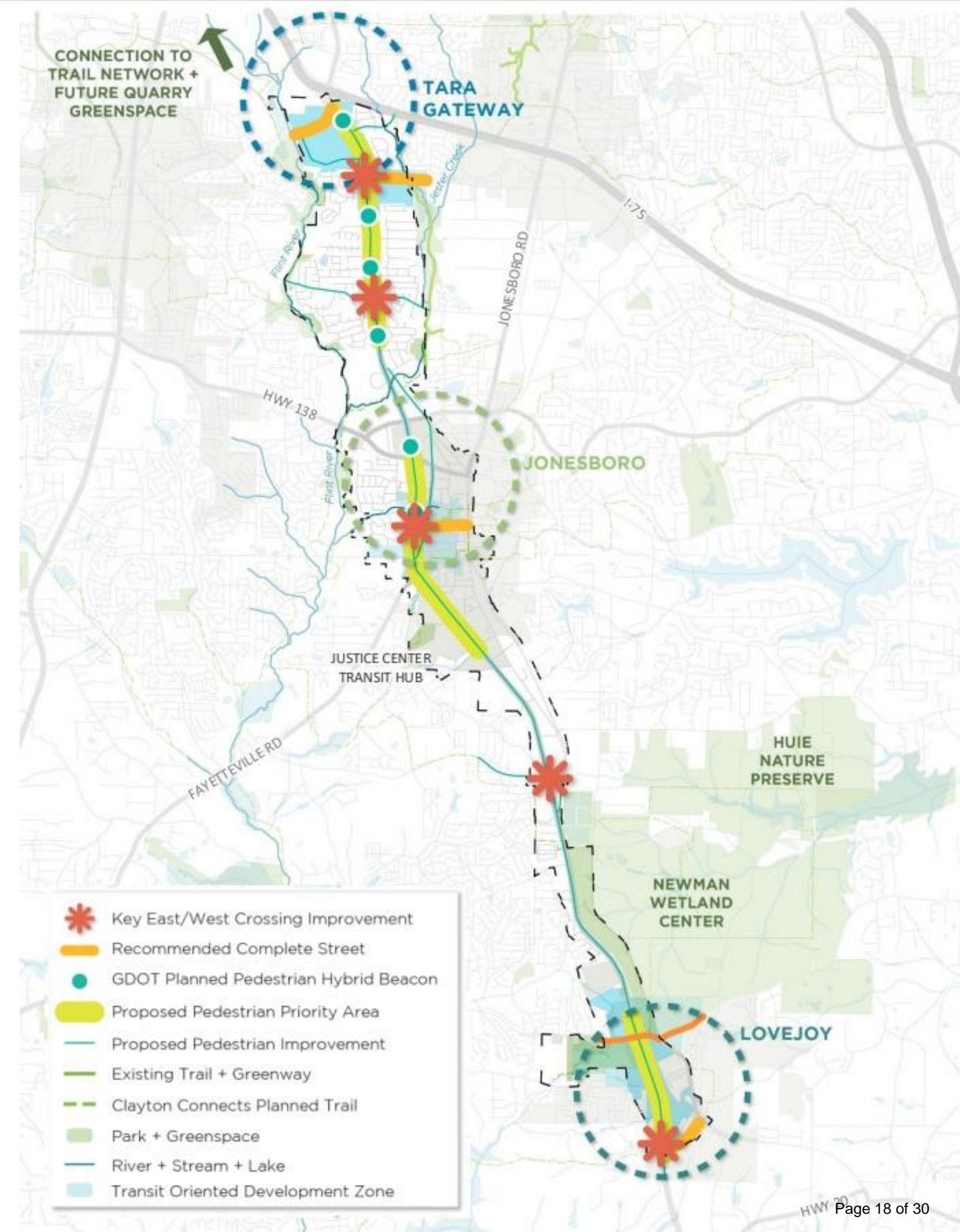
-  Complete Street improvements on key cross streets
-  Transit Oriented Development Overlay zones

### 2- A PARKWAY

-  Pedestrian-oriented network of connected greenspaces
-  Pedestrian Priority "Zones" where pedestrian-level design should be prioritized

### 3- A CONNECTOR

-  Recommended crossing improvements at key signaled intersections
-  GDOT planned Pedestrian Hybrid Beacons between signaled intersections



# Tara Boulevard LCI



## EVENT RECAP

**Clayton County wins big! Recognized for exceptional planning, safety, and connectivity along Tara Boulevard — proof that collaboration drives success!**

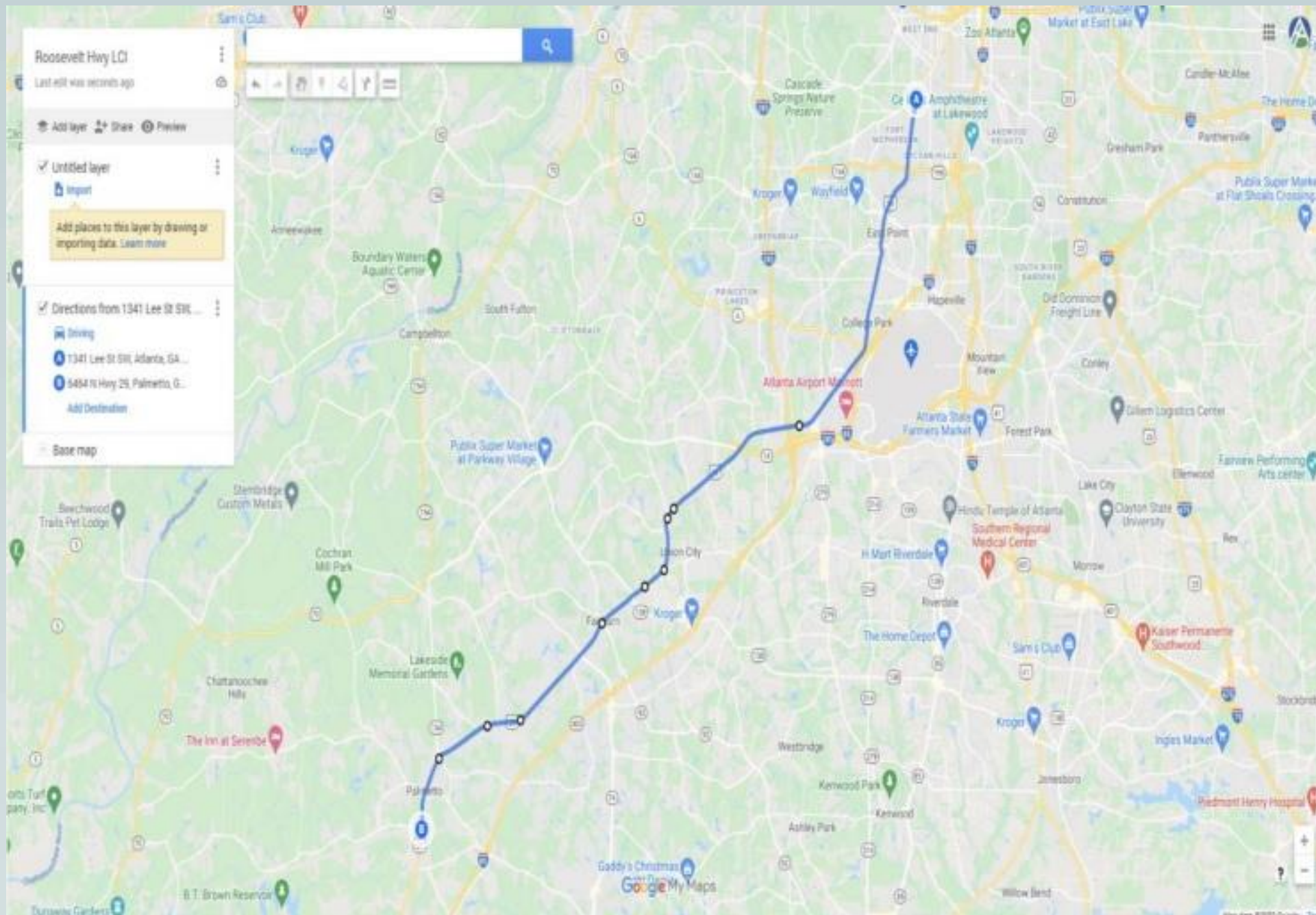
# South Metro Trails Leadership Alliance (Aerotropolis Lead)

\*Extending ATL Beltline South

- **Flint River Gateway Trails Master Plan:** This effort will create a master plan for the quarter-mile wide corridor centered on the Flint River, connecting the Tri-Cities area of East Point, College Park, and Hapeville and Clayton, Fayette, and Spalding counties. This plan will contain a strategy to mitigate displacement.
- **South Metro Trail & Bicycle Facility Network Plan:** This project will develop a regional trail plan for a six-county area (South Fulton, Coweta, Fayette, Clayton, Henry, and Spalding) that will identify specific alignment options. The planning area includes three rivers: The Chattahoochee to the west, the South River to the east, and the Flint in the middle.
- **Regional Trail & Bicycle Facility Network Plan:** This plan will create a regional trail plan for the entire 19-county Metropolitan Planning Organization.
- **RECENTLY APPROVED CONTRACTOR** – Under negotiations  
January 2026



# ROOSEVELT HIGHWAY LIVEABLE CENTERS INITIATIVE



## Proposed Areas of Focus

- Increased walkability through trail networks and enhanced multimodal connectivity (S. Metro Trails)
- Encourage redevelopment while creating appropriate buffers between industrial and commercial uses
- Improve traffic safety for both motorists and pedestrians
- Explore tax incentive tools to attract development, including the potential use of Tax Allocation Districts in downtowns
- Assess opportunities for Georgia Main Street designations
- Identify solutions to alleviate traffic congestion
- Identify catalytic sites and strategies to increase foot traffic in support of small businesses

# LOGISTICS FOR GRANT APPLICATION

**Proposed 20% Local  
Match  
\$160,000**

**total cost of project \$800,000**

- The Aerotropolis Atlanta Alliance will underwrite the application and present to each City Council, if needed
- The City of Fairburn will serve as the lead applicant, based on their recent experience with ARC transportation studies and their active promotion of their catalytic site within the Aerotropolis Blueprint 2.0
  - **City of South Fulton (6.17 MILES) - 25% - \$40,000**
  - **Total Miles : 26 Miles**

- The 2026 LCI application opened at 9:00AM on Wednesday, January 14th, 2026
- The application submission window closes at 11:59PM on Friday, February 27th, 2026
- ARC will announce studies selected for funding at the Board meeting on Wednesday, May 13th, 2026



AEROTROPOLIS  
ATLANTA

LAND HERE. TAKE OFF.

**THANK YOU**  
**City of South Fulton**

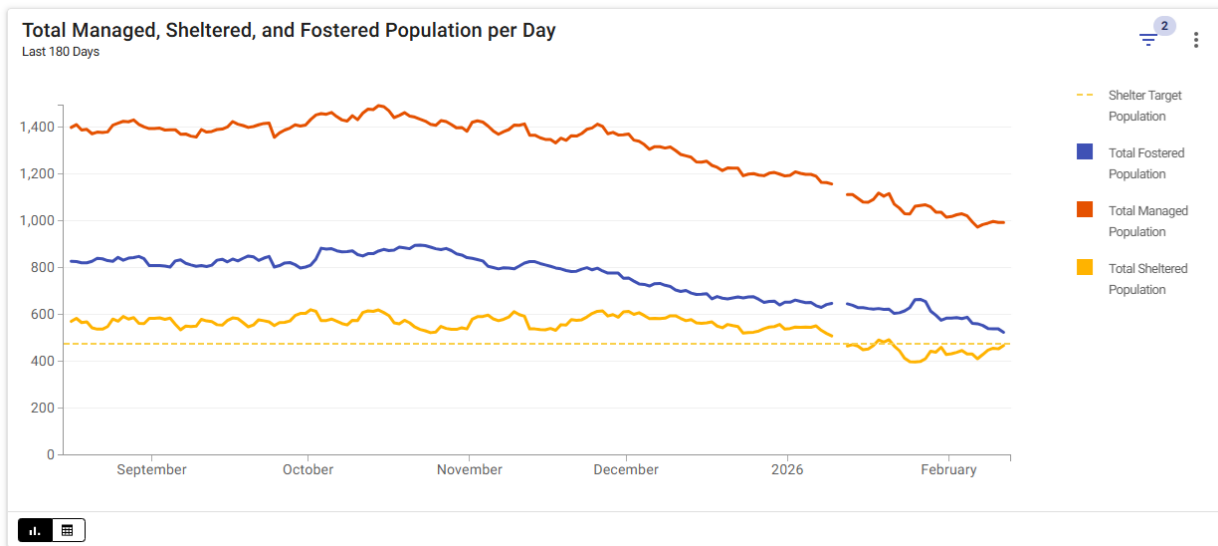
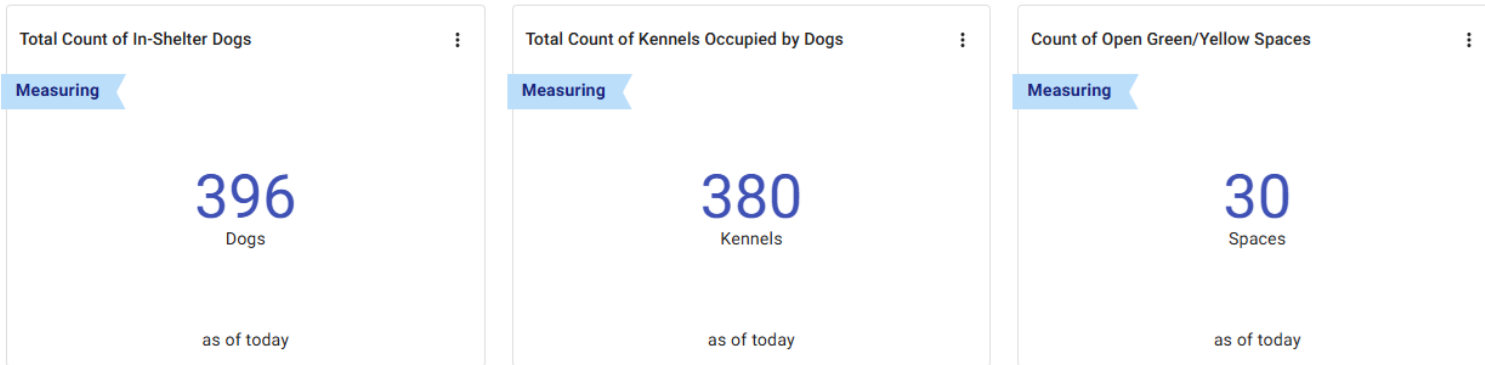




# Animal Shelter and Field Services

# Animal Shelter Population

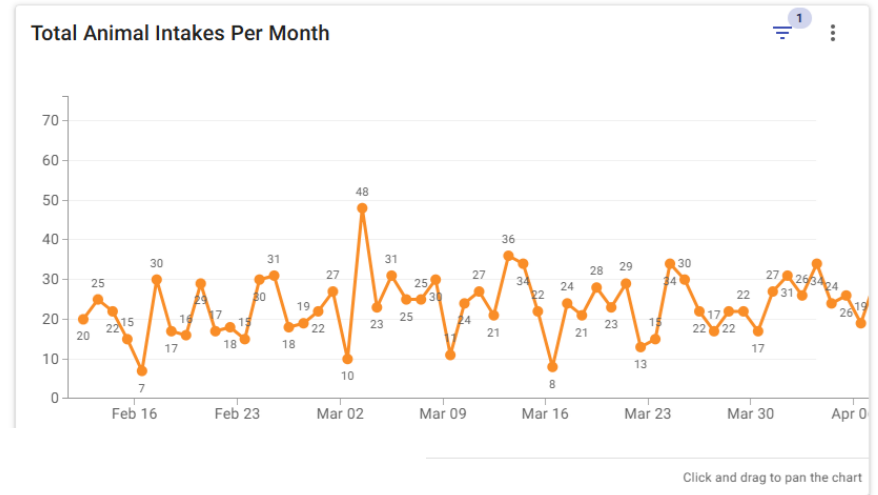
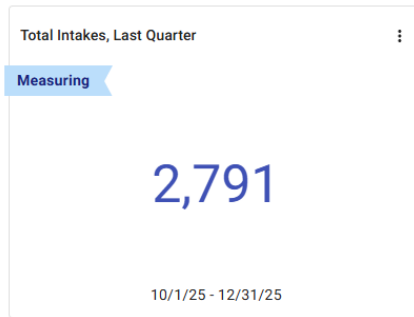
## In Shelter Daily Dog Kennel Usage Inventory



# Intake and Adoptions

## Total Intakes Per Month

This line graph shows the total number of animal intakes that Lifeline is processing each month. This trend line demonstrates the trends month over month that affect the total animal shelter population.



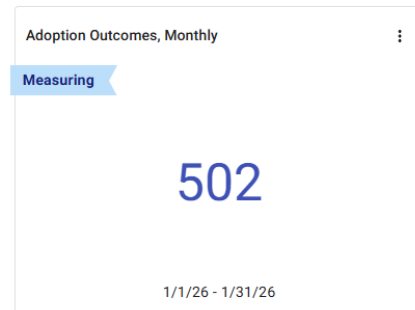
## Adoption Outcomes Details

By choosing to adopt from an animal shelter citizens give a second chance to a deserving pet and contribute to the welfare of animals that are in need. But it's not only the deep sense of fulfillment that comes from giving a home to an animal in need, but the happiness and bond between a shelter pet and its adopter is truly special.

## Adoptions Quarterly Count



## Adoptions Monthly Count



## Adoptions Weekly Count



# Field Services Updates

Total Number of Calls this Year

Measuring

1,320  
calls

1/1/26 to today

Total Number of Calls in the Last Quarter

Measuring

4,120  
calls

10/1/25 - 12/31/25

Total Number of Calls in the Last Month

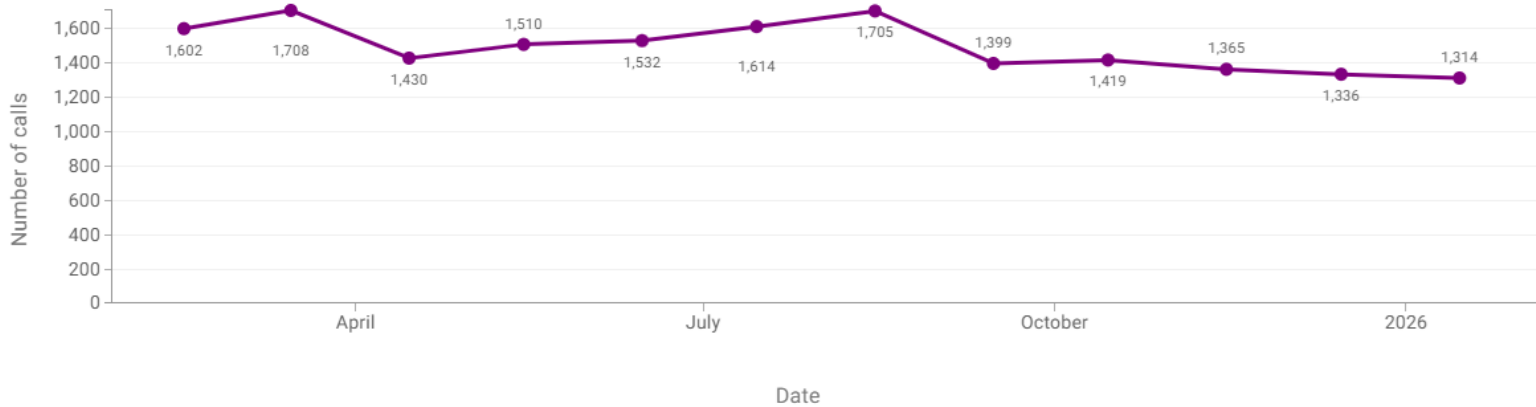
Measuring

1,314  
calls

1/1/26 - 1/31/26

## Monthly Animal Services Calls Trends

Last 12 Months



# Calls for Service

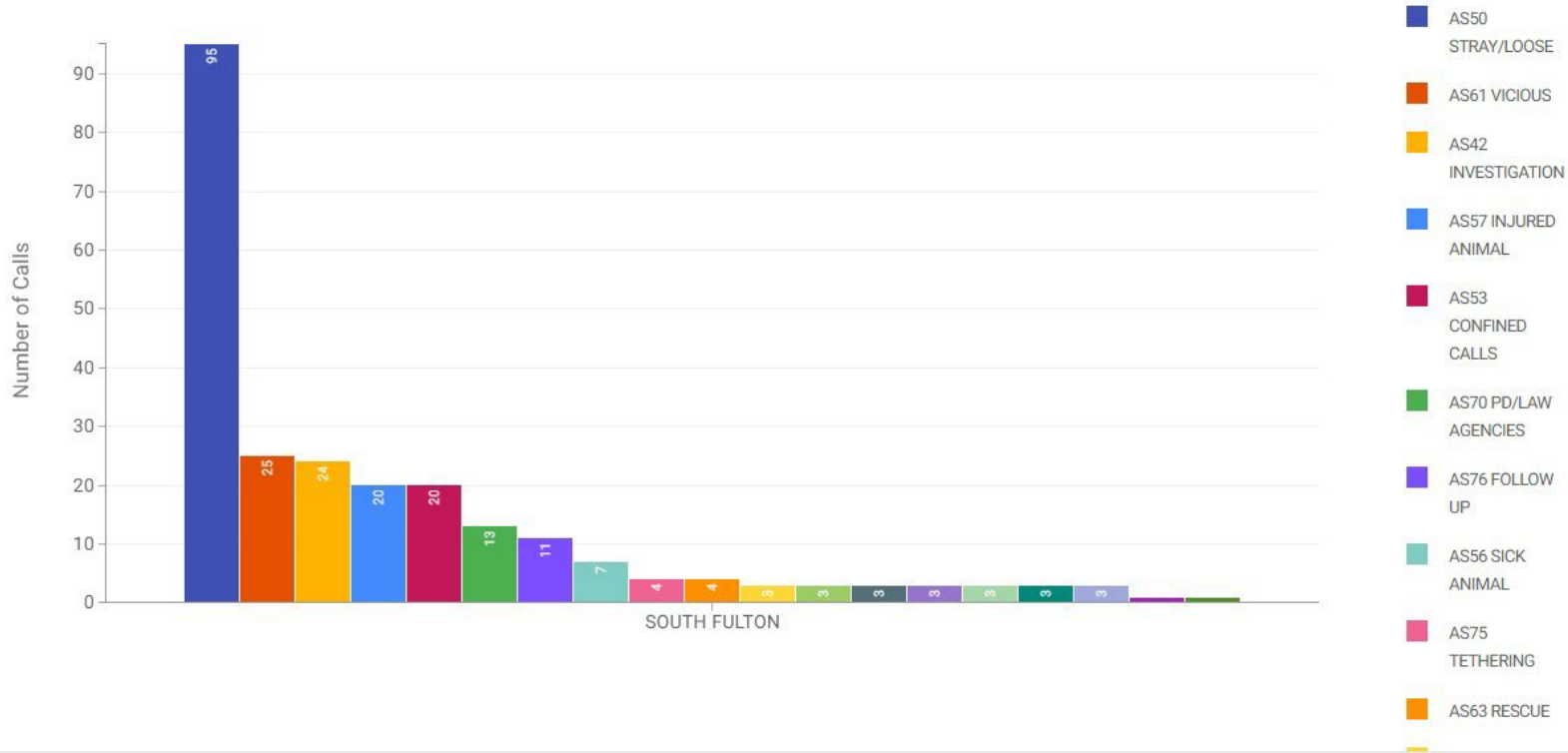
## City of South Fulton Calls for Service



# City of South Fulton Calls by Nature

## Total Number of Calls by Nature

This Year



# Transfer of Animal Services

- **On December 17, 2025, Field Services transferred from Lifeline to the Fulton County Police Department**
- **Your contact will be:**



**Captain Nikki Dwyer**  
Animal Services Division  
Fulton County Police Department  
3977 Aviation Circle NW  
Atlanta, GA 30336  
(Office) 404-613-9009  
(Cell) 470-312-3090  
[Nicole.Dwyer@fultoncountyga.gov](mailto:Nicole.Dwyer@fultoncountyga.gov)

- **Expected Improvements:**
  - Field Services staff will be Fulton County employees and hiring has begun
  - Improvement in response times on calls for service
  - Improve handling of evidence and case files to help improve processing of cases
  - Increase communications with the cites and access to call data

